



MLS 6808960 Residential

\$579,900

2,803 sq ft
3 bedrooms
2 baths

3403 68th Avenue
Akeley MN 56433

Status: Pending

Description:

This well-built log home sits on over 10 beautiful acres bordered by 100 acres of state land, ideal for trail riding and hunting. A covered porch welcomes you into an open floor plan featuring vaulted ceilings and a kitchen with custom maple cabinets, stainless steel appliances, granite countertops, and a maple butcher block island. The cozy living room offers a gas fireplace, office nook, and ample storage. The main-level primary bedroom includes a walk-through bath with a jetted tub and tile shower, while log stairs lead to a loft bedroom with a private deck overlooking the pasture and barn. The lower level contains a safe room/library, a bedroom, full bath, living area with epoxy floors, and laundry. The detached garage is split into a heated two-stall section and a single-stall area leading to a two-bedroom plus loft apartment, currently adding \$1600 per month in rent. The property also features a working hay elevator in the barn, 10 oak stalls, a tack room, and more leasable pasture acres available from neighbors. Amazing ATV and snowmobile trails are nearby, with Crystal Lake public access less than 1 mile away and 120 lakes within a 10-mile radius.

Additional Details:

Year Built	2002
Lot Acres	10.1
Lot Dimensions	330x1320
Garage Stalls	3
School District	693
Taxes	\$1,924
Taxes with Assessments	\$1,990
Tax Year	2025

Additional Features:

Basement: Egress Window(s), Finished, Full, Concrete, Walkout **Fuel:** Array **Garage:** 3 **Heat:** Dual Fuel/Off Peak, Forced Air **Sewer:** Private Sewer, Septic System Compliant - Yes, Tank with Drainage Field **Water:** 4-Inch Submersible, Drilled, Private, Well **Air Conditioning:** Central Air

Driving Directions:

From Hackensack, go west on County 40 to right on 68th Ave to #3403 on left.



Listed By:
eXp Realty

Affinity Real Estate Inc. participates in the Regional Multiple Listing Service of Minnesota, Inc Broker Reciprocity (sm) program, allowing us to display other broker's listings on our website. All properties are subject to prior sale, change or withdrawal.



Call Affinity Real Estate

218-237-3333

info@affinityrealestate.com



Affinity Real Estate - 600 Park Avenue South - Park Rapids MN 56470



website: www.AffinityRealEstate.com | email: info@affinityrealestate.com | office: 218-237-3333 | fax:218-237-3377



\$579,900
MLS 6808960 Residential
3403 68th Avenue
Akeley MN 56433



website: www.AffinityRealEstate.com | email: info@affinityrealestate.com | office: 218-237-3333 | fax:218-237-3377



\$579,900
MLS 6808960 Residential
3403 68th Avenue
Akeley MN 56433



website: www.AffinityRealEstate.com | email: info@affinityrealestate.com | office: 218-237-3333 | fax: 218-237-3377

Affinity
REAL ESTATE INC

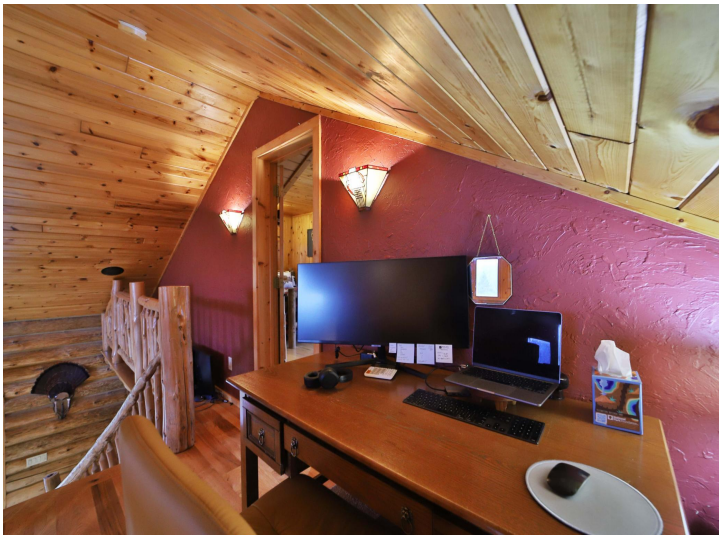
\$579,900
MLS 6808960 Residential
3403 68th Avenue
Akeley MN 56433



website: www.AffinityRealEstate.com | email: info@affinityrealestate.com | office: 218-237-3333 | fax: 218-237-3377

Affinity
REAL ESTATE INC

\$579,900
MLS 6808960 Residential
3403 68th Avenue
Akeley MN 56433



website: www.AffinityRealEstate.com | email: info@affinityrealestate.com | office: 218-237-3333 | fax:218-237-3377

Affinity
REAL ESTATE INC

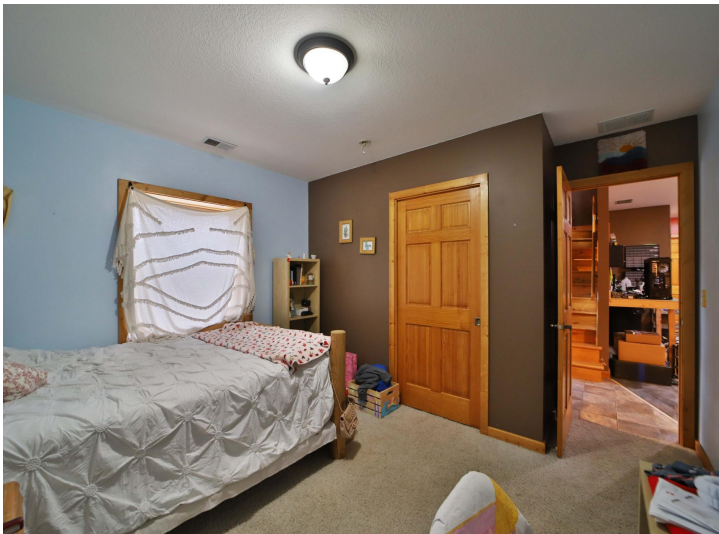
\$579,900
MLS 6808960 Residential
3403 68th Avenue
Akeley MN 56433



website: www.AffinityRealEstate.com | email: info@affinityrealestate.com | office: 218-237-3333 | fax:218-237-3377



\$579,900
MLS 6808960 Residential
3403 68th Avenue
Akeley MN 56433



website: www.AffinityRealEstate.com | email: info@affinityrealestate.com | office: 218-237-3333 | fax:218-237-3377

Affinity
REAL ESTATE INC

\$579,900
MLS 6808960 Residential
3403 68th Avenue
Akeley MN 56433



website: www.AffinityRealEstate.com | email: info@affinityrealestate.com | office: 218-237-3333 | fax: 218-237-3377

Affinity
REAL ESTATE INC

\$579,900
MLS 6808960 Residential
3403 68th Avenue
Akeley MN 56433



website: www.AffinityRealEstate.com | email: info@affinityrealestate.com | office: 218-237-3333 | fax:218-237-3377

Affinity
REAL ESTATE INC

\$579,900
MLS 6808960 Residential
3403 68th Avenue
Akeley MN 56433



website: www.AffinityRealEstate.com | email: info@affinityrealestate.com | office: 218-237-3333 | fax:218-237-3377

Affinity
REAL ESTATE INC

\$579,900
MLS 6808960 Residential
3403 68th Avenue
Akeley MN 56433



website: www.AffinityRealEstate.com | email: info@affinityrealestate.com | office: 218-237-3333 | fax: 218-237-3377

Affinity
REAL ESTATE INC

\$579,900
MLS 6808960 Residential
3403 68th Avenue
Akeley MN 56433



website: www.AffinityRealEstate.com | email: info@affinityrealestate.com | office: 218-237-3333 | fax:218-237-3377

Affinity
REAL ESTATE INC

\$579,900
MLS 6808960 Residential
3403 68th Avenue
Akeley MN 56433



website: www.AffinityRealEstate.com | email: info@affinityrealestate.com | office: 218-237-3333 | fax:218-237-3377



\$579,900
MLS 6808960 Residential
3403 68th Avenue
Akeley MN 56433



website: www.AffinityRealEstate.com | email: info@affinityrealestate.com | office: 218-237-3333 | fax:218-237-3377



\$579,900
MLS 6808960 Residential
3403 68th Avenue
Akeley MN 56433

website: www.AffinityRealEstate.com | email: info@affinityrealestate.com | office: 218-237-3333 | fax:218-237-3377



\$579,900
MLS 6808960 Residential
3403 68th Avenue
Akeley MN 56433

website: www.AffinityRealEstate.com | email: info@affinityrealestate.com | office: 218-237-3333 | fax:218-237-3377



\$579,900
MLS 6808960 Residential
3403 68th Avenue
Akeley MN 56433