



MLS 6809776 Land

\$59,900

2.33 Acres
Finished Lot(s)

TBD X23 My Abbeys Way Lane
Pequot Lakes MN 56472

Status: Active

Description:

New residential neighborhood in the heart of the Nisswa and Pequot Lakes area. Nicely wooded 2.25+ acre lots are designed to offer peace and privacy in a rural setting and a great location for your new home. New streets are now paved and ditches hydroseeded, quiet streets without through traffic. Drive through anytime! CW Power and TDS cable, phone and high speed internet are available at street. Parcels other than those in MLS may be available at this time. Close to Gull Lake, Pillsbury State forest, Pelican lake, championship golf and all the lakes area has to offer. See covenants and plat in supplements.

Additional Details:

Lot Acres	2.33
Lot Dimensions	381x187x222x506
School District	186
Taxes	\$58
Taxes with Assessments	\$58
Tax Year	2024

Additional Features:

Driving Directions:

From Nisswa, North on Hwy 371 to Left on Co Rd 29 (Wilderness Rd) to Right on Co Rd 78 (17th Ave) to Right on 72nd St SW, to Left on Abby's Lane SW to Left on Smiley Way .



Listed By:
Kurilla Real Estate LTD

Affinity Real Estate Inc. participates in the Regional Multiple Listing Service of Minnesota, Inc Broker Reciprocity (sm) program, allowing us to display other broker's listings on our website. All properties are subject to prior sale, change or withdrawal.



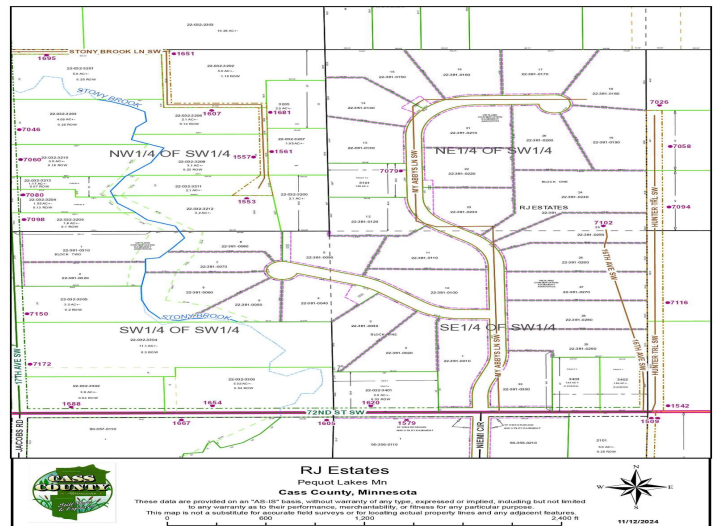
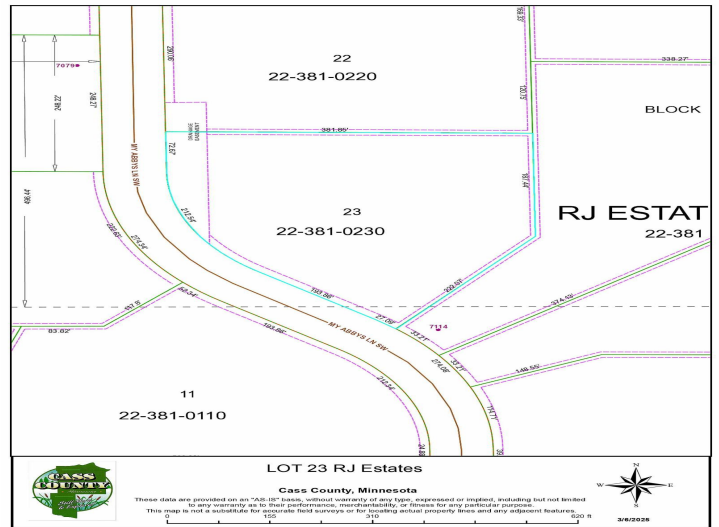
Call Affinity Real Estate

218-237-3333

info@affinityrealestate.com



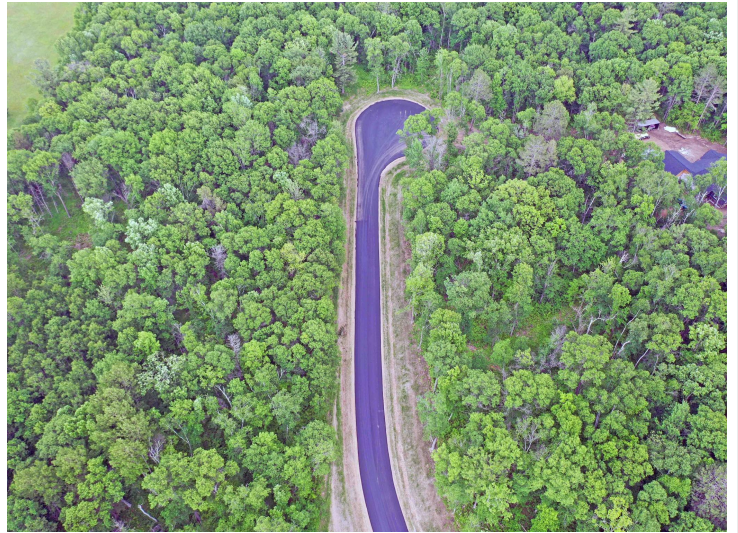
Affinity Real Estate - 600 Park Avenue South - Park Rapids MN 56470



website: www.AffinityRealEstate.com | email: info@affinityrealestate.com | office: 218-237-3333 | fax: 218-237-3377

Affinity
REAL ESTATE INC

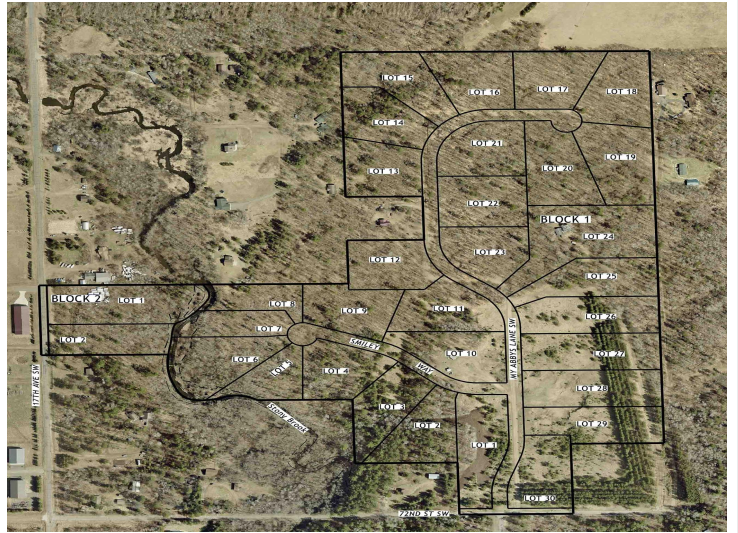
\$59,900
MLS 6809776 Land
TBD X23 My Abbeys Way
Lane
Pequot Lakes MN 56472



website: www.AffinityRealEstate.com | email: info@affinityrealestate.com | office: 218-237-3333 | fax: 218-237-3377



\$59,900
 MLS 6809776 Land
 TBD X23 My Abbeys Way
 Lane
 Pequot Lakes MN 56472



website: www.AffinityRealEstate.com | email: info@affinityrealestate.com | office: 218-237-3333 | fax: 218-237-3377



\$59,900
 MLS 6809776 Land
 TBD X23 My Abbeys Way
 Lane
 Pequot Lakes MN 56472