



MLS 6809836 Residential

\$328,000

1,164 sq ft
2 bedrooms
2 baths

1615 30th Street
Bemidji MN 56601

Status: Active

Description:

Brand new shingles in 2025! Immaculate one level living! 2BR/2BA end unit located in a fine neighborhood. Close to shopping, medical, banking & restaurants. Open layout features a spacious living area, accentuated by southwestern-facing windows that bathe the interiors in natural light. Kitchen equipped with stainless steel appliances, upgraded cabinetry & a large island complete with a breakfast bar. Primary suite boasts a generously sized walk-in shower. Step outside to your concrete patio, ideal for BBQs & outdoor furniture. Hassle-free lifestyle with no exterior maintenance, as the HOA takes care of snow removal, landscaping upkeep & other helpful tasks. Double finished heated garage for added convenience. Community amenities include an exercise room, meeting room & a kitchen—perfect for hosting gatherings. Don't miss the opportunity to experience this beautifully designed home!

Additional Details:

Year Built	2017
Lot Acres	0.04
Lot Dimensions	42x45
Garage Stalls	2
School District	31
Taxes	\$3,252
Taxes with Assessments	\$3,252
Tax Year	2025

Additional Features:

Basement: Other **Fuel:** Natural Gas **Garage:** 2 **Heat:** Forced Air **Sewer:** City Sewer/Connected **Water:** City Water/Connected **Air Conditioning:** Central Air

Driving Directions:

North on Irvine Ave, left on 30th St, right into Northridge Cottages. House on the left at the end.



Listed By:
Century 21 Dickinson

Affinity Real Estate Inc. participates in the Regional Multiple Listing Service of Minnesota, Inc Broker Reciprocity (sm) program, allowing us to display other broker's listings on our website. All properties are subject to prior sale, change or withdrawal.



Call Affinity Real Estate

218-237-3333

info@affinityrealestate.com



Affinity Real Estate - 600 Park Avenue South - Park Rapids MN 56470



website: www.AffinityRealEstate.com | email: info@affinityrealestate.com | office: 218-237-3333 | fax: 218-237-3377



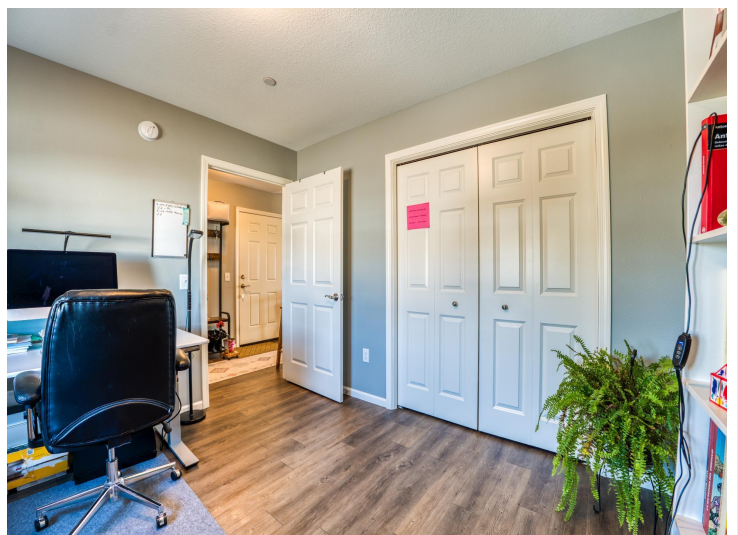
\$328,000
 MLS 6809836 Residential
 1615 30th Street
 Bemidji MN 56601



website: www.AffinityRealEstate.com | email: info@affinityrealestate.com | office: 218-237-3333 | fax: 218-237-3377



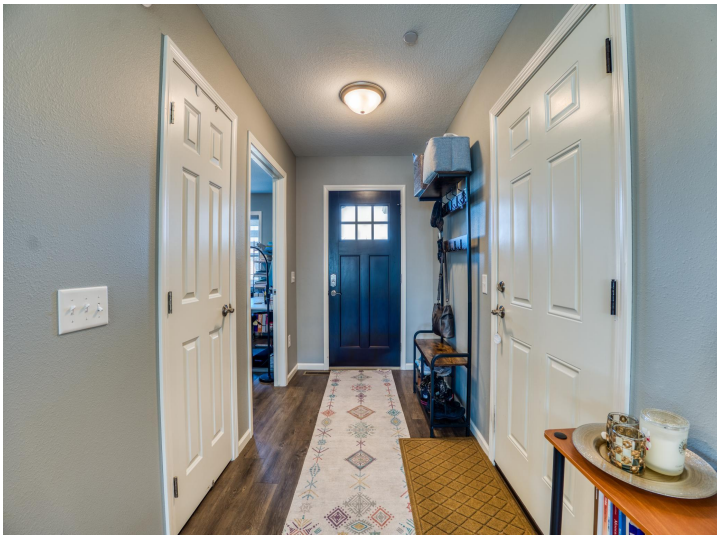
\$328,000
 MLS 6809836 Residential
 1615 30th Street
 Bemidji MN 56601



website: www.AffinityRealEstate.com | email: info@affinityrealestate.com | office: 218-237-3333 | fax: 218-237-3377

Affinity
REAL ESTATE INC

\$328,000
MLS 6809836 Residential
1615 30th Street
Bemidji MN 56601



website: www.AffinityRealEstate.com | email: info@affinityrealestate.com | office: 218-237-3333 | fax: 218-237-3377

Affinity
REAL ESTATE INC

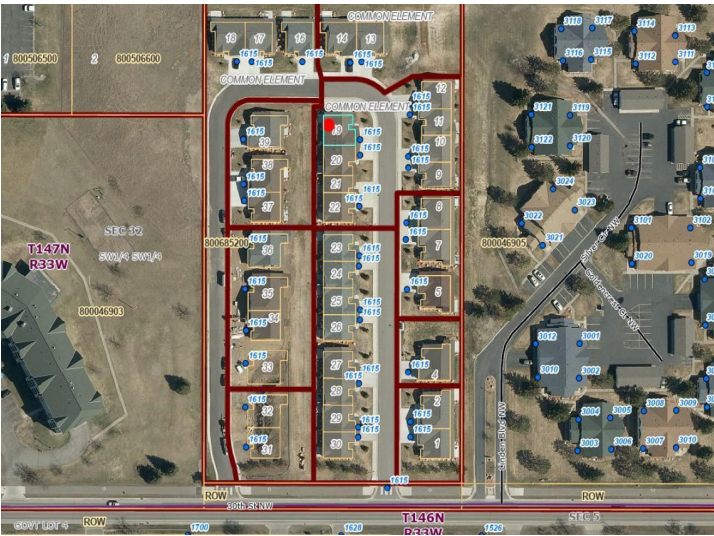
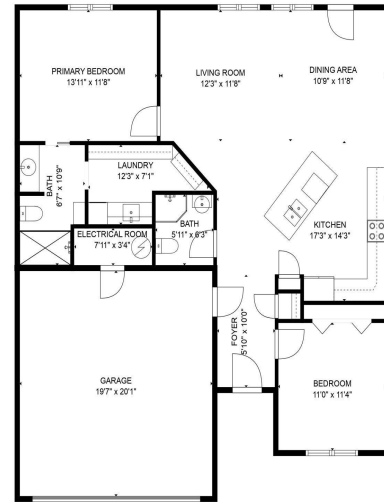
\$328,000
MLS 6809836 Residential
1615 30th Street
Bemidji MN 56601



website: www.AffinityRealEstate.com | email: info@affinityrealestate.com | office: 218-237-3333 | fax: 218-237-3377



\$328,000
 MLS 6809836 Residential
 1615 30th Street
 Bemidji MN 56601



website: www.AffinityRealEstate.com | email: info@affinityrealestate.com | office: 218-237-3333 | fax: 218-237-3377



\$328,000
 MLS 6809836 Residential
 1615 30th Street
 Bemidji MN 56601