



MLS 6809895 Land

\$65,000

2.58 Acres
Finished Lot(s)

TBD XX18 My Abbys Way Lane
Pequot Lakes MN 56472

Status: Active

Description:

Nicely wooded lot on the cul-de-sac, great location! New residential neighborhood in the heart of the Nisswa and Pequot Lakes area. Spacious, wooded 2.25+ acre lots are designed to offer peace and privacy in a rural setting and a great location for your new home. Newly paved streets, hydro-seeded ditches and quiet streets without through traffic add to this perfect location. Crow Wing Power and TDS fiber optics are at road. Parcels other than those listed in the MLS may also be available. These lots are close to Gull Lake, the Pillsbury State Forests, Pelican Lake, championship golf courses and all the Lakes Area has to offer. Ask a Real Estate Agent to see the Covenants and Plats that are available in Supplements. These are going fast, so come look before it's too late!

Additional Details:

Lot Acres	2.58
Lot Dimensions	83x303x440x175x369
School District	186
Taxes	\$58
Taxes with Assessments	\$58
Tax Year	2025

Additional Features:

Driving Directions:

From Nisswa, North on Hwy 371 to Left on Co Rd 29 (Wilderness Rd) to Right on Co Rd 78 (17th Ave) to Left on 72nd St SW, first left on Smiley Way to sign.



Listed By:
Kurilla Real Estate LTD

Affinity Real Estate Inc. participates in the Regional Multiple Listing Service of Minnesota, Inc Broker Reciprocity (sm) program, allowing us to display other broker's listings on our website. All properties are subject to prior sale, change or withdrawal.



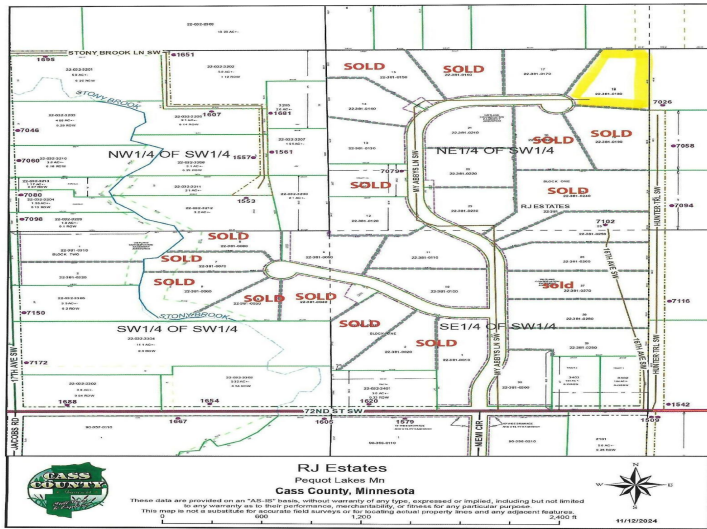
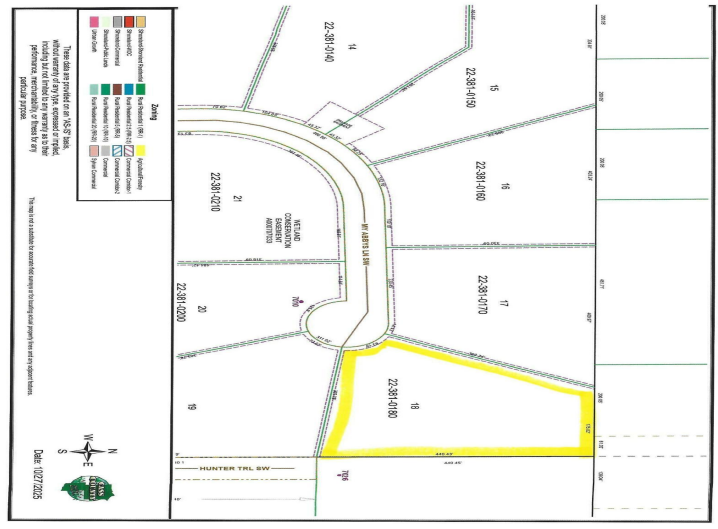
Call Affinity Real Estate

218-237-3333

info@affinityrealestate.com



Affinity Real Estate - 600 Park Avenue South - Park Rapids MN 56470



website: www.AffinityRealEstate.com | email: info@affinityrealestate.com | office: 218-237-3333 | fax: 218-237-3377



\$65,000
 MLS 6809895 Land
 TBD XX18 My Abbys Way
 Lane
 Pequot Lakes MN 56472

website: www.AffinityRealEstate.com | email: info@affinityrealestate.com | office: 218-237-3333 | fax:218-237-3377



\$65,000

MLS 6809895 Land
TBD XX18 My Abbys Way
Lane
Pequot Lakes MN 56472