



MLS 6810380 Residential

**\$379,000**

1,586 sq ft  
3 bedrooms  
2 baths

15196 Boom Street  
Brainerd MN 56401

Status: Active

**Description:**

Completed New Construction MOVE-IN READY!!! Final Phase of Construction in this neighborhood. Move-in Ready. This beautifully designed multi-level home features an open floor plan with all three bedrooms conveniently located on the upper level. The Savannah offers incredible value, providing generous finished square footage at an unbeatable price. Looking for extra space? The basement is roughed-in and ready for your personal touch. Built by Thomas Allen Homes, this stunning home plan is just one of our available floor plans. Our process allows buyers to personalize finishes, colors, and options to create their perfect home. This three-level split home includes 3 bedrooms, 2 bathrooms, and a 3-stall garage with underground irrigation. Now is the time to secure your new home before it's too late!

**Additional Details:**

|                        |            |
|------------------------|------------|
| Year Built             | 2025       |
| Lot Acres              | 0.47       |
| Lot Dimensions         | 64x211 irr |
| Garage Stalls          | 3          |
| School District        | 896        |
| Taxes                  | \$246      |
| Taxes with Assessments | \$246      |
| Tax Year               | 2025       |

**Additional Features:**

**Basement:** Full, Unfinished **Fuel:** Array **Garage:** 3 **Heat:** Forced Air **Sewer:** City Sewer/Connected **Water:** City Water/Connected **Air Conditioning:** Central Air

**Driving Directions:**

FROM Brainerd, North past Ice Arena on Riverside to left on Beaver Dam Rd to Right on Northtown St. Right on Viking.



Listed By:  
Edina Realty, Inc.

Affinity Real Estate Inc. participates in the Regional Multiple Listing Service of Minnesota, Inc Broker Reciprocity (sm) program, allowing us to display other broker's listings on our website. All properties are subject to prior sale, change or withdrawal.



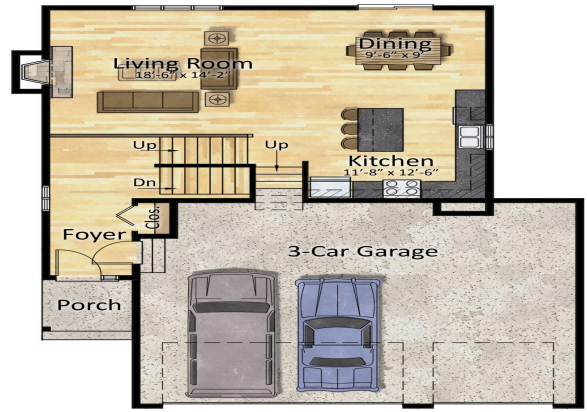
**Call Affinity Real Estate**

**218-237-3333**

**info@affinityrealestate.com**

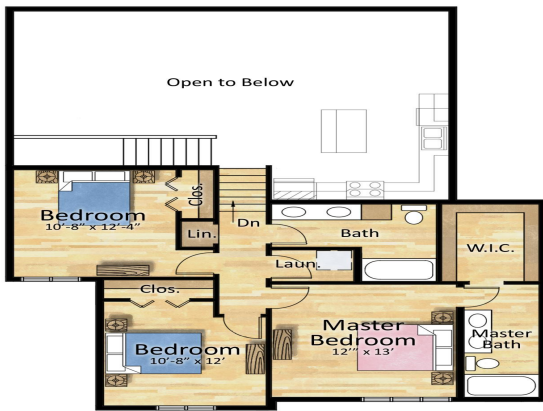


**Affinity Real Estate - 600 Park Avenue South - Park Rapids MN 56470**



First Floor Plan

ResidentialRendering.com



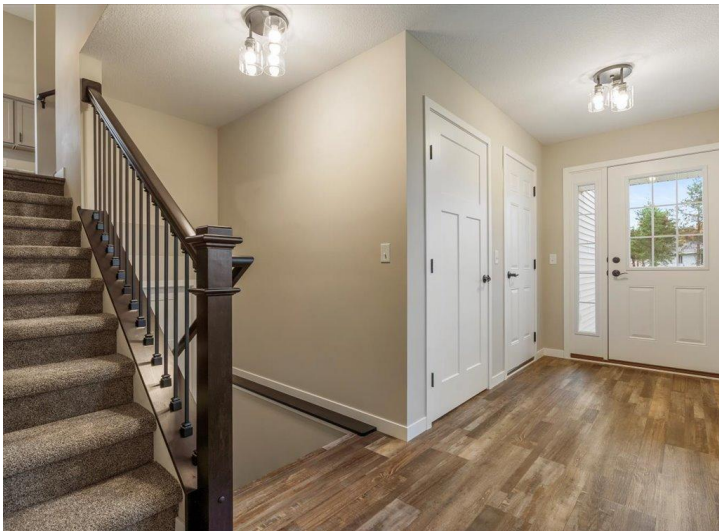
Upper Floor Plan

ResidentialRendering.com



Lower Floor Plan

ResidentialRendering.com



website: [www.AffinityRealEstate.com](http://www.AffinityRealEstate.com) | email: [info@affinityrealestate.com](mailto:info@affinityrealestate.com) | office: 218-237-3333 | fax: 218-237-3377



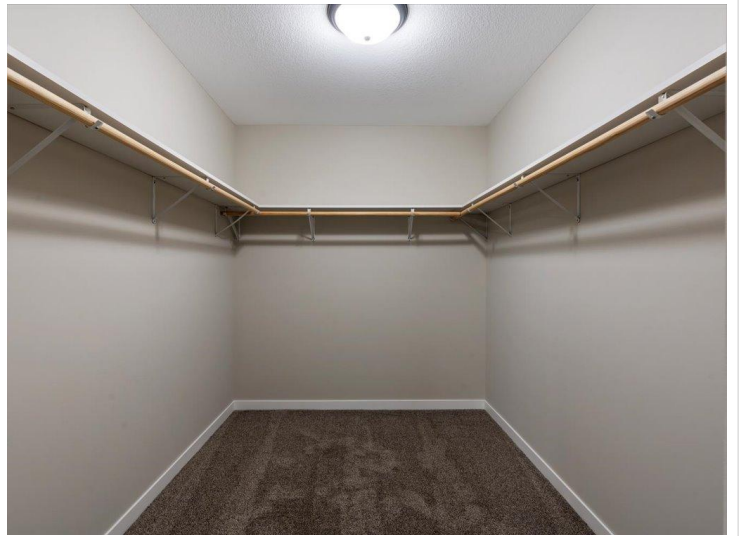
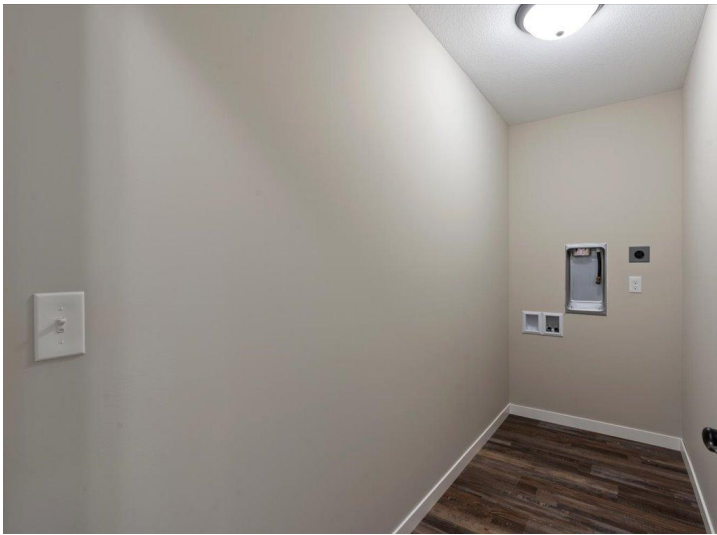
**\$379,000**  
 MLS 6810380 Residential  
 15196 Boom Street  
 Brainerd MN 56401



website: [www.AffinityRealEstate.com](http://www.AffinityRealEstate.com) | email: [info@affinityrealestate.com](mailto:info@affinityrealestate.com) | office: 218-237-3333 | fax:218-237-3377



**\$379,000**  
MLS 6810380 Residential  
15196 Boom Street  
Brainerd MN 56401



website: [www.AffinityRealEstate.com](http://www.AffinityRealEstate.com) | email: [info@affinityrealestate.com](mailto:info@affinityrealestate.com) | office: 218-237-3333 | fax:218-237-3377



**\$379,000**  
MLS 6810380 Residential  
15196 Boom Street  
Brainerd MN 56401