



MLS 6810385 Residential

\$400,000

1,049 sq ft
3 bedrooms
2 baths

3918 44th Street
Pine River MN 56474

Status: Active

Description:

Discover a rare 3 bed, 2 bath, fully-equipped Northwoods getaway atop Maple Hill, high point in Cass County at over 1550 feet of breathtaking elevation. This heavily wooded 35.73-acre parcel offers the perfect blend of true wilderness seclusion and hunter's paradise. Forget starting from scratch, tucked into the timber is a charming rustic cabin featuring the ultimate camp, drilled well and septic system. This exceptional opportunity to own a high-elevation, turnkey recreational parcel with established utilities, trails, hunting stands and so much more is ready for the next legacy. Call today to walk the trails and experience the pinnacle of Cass County wilderness.

Additional Details:

Year Built	1965
Lot Acres	35.73
Lot Dimensions	990x1309x1321xirr
Garage Stalls	1
School District	2174
Taxes	\$954
Taxes with Assessments	\$1,020
Tax Year	2025

Additional Features:

Fuel: Propane, Wood **Heat:** Forced Air, Wood Stove

Driving Directions:

371 to County Rd 1 South to County Rd 26 (48th St) follow to 44th St by Maple Hill Lutheran Church turn on to 44th St SW. First Property on left with sign. Please set navigation to go to Maple Hill Lutheran Church this will keep you on blacktop.



Listed By:
Edina Realty, Inc.

Affinity Real Estate Inc. participates in the Regional Multiple Listing Service of Minnesota, Inc Broker Reciprocity (sm) program, allowing us to display other broker's listings on our website. All properties are subject to prior sale, change or withdrawal.



Call Affinity Real Estate

218-237-3333

info@affinityrealestate.com



Affinity Real Estate - 600 Park Avenue South - Park Rapids MN 56470



website: www.AffinityRealEstate.com | email: info@affinityrealestate.com | office: 218-237-3333 | fax: 218-237-3377

Affinity
REAL ESTATE INC

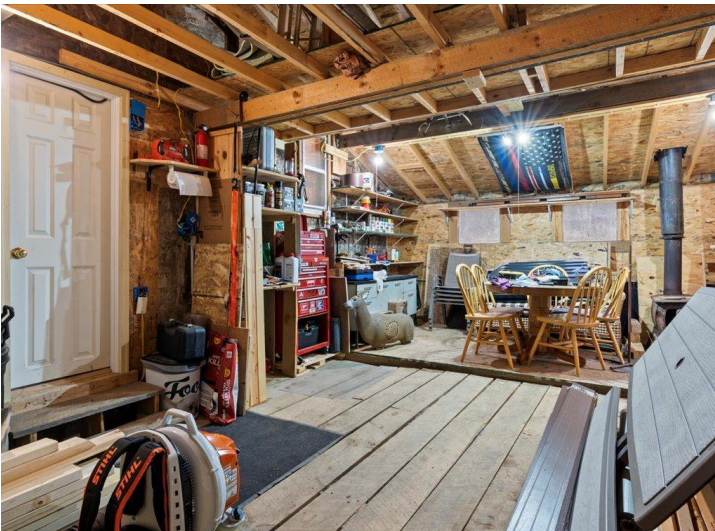
\$400,000
MLS 6810385 Residential
3918 44th Street
Pine River MN 56474



website: www.AffinityRealEstate.com | email: info@affinityrealestate.com | office: 218-237-3333 | fax: 218-237-3377

Affinity
REAL ESTATE INC

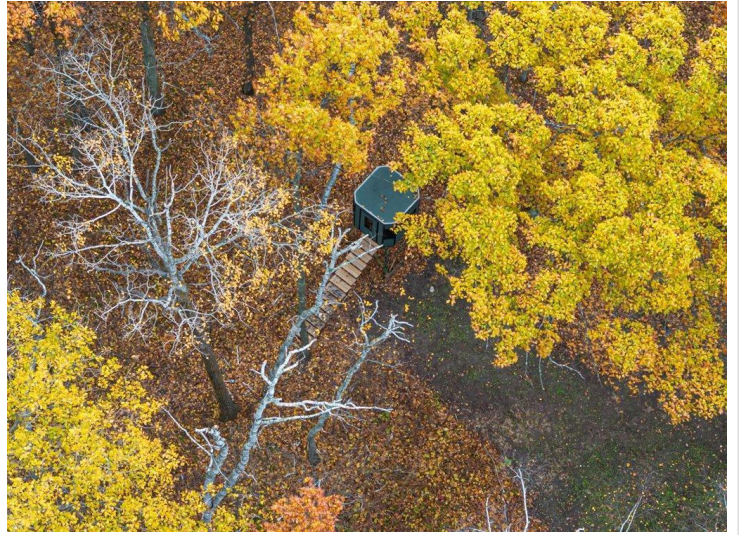
\$400,000
MLS 6810385 Residential
3918 44th Street
Pine River MN 56474



website: www.AffinityRealEstate.com | email: info@affinityrealestate.com | office: 218-237-3333 | fax: 218-237-3377

Affinity
REAL ESTATE INC

\$400,000
MLS 6810385 Residential
3918 44th Street
Pine River MN 56474



website: www.AffinityRealEstate.com | email: info@affinityrealestate.com | office: 218-237-3333 | fax: 218-237-3377



\$400,000

MLS 6810385 Residential
3918 44th Street
Pine River MN 56474



website: www.AffinityRealEstate.com | email: info@affinityrealestate.com | office: 218-237-3333 | fax: 218-237-3377

Affinity
REAL ESTATE INC

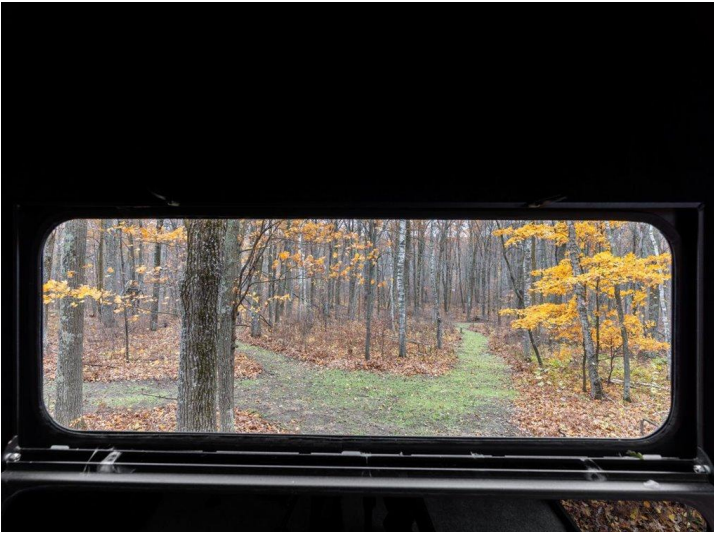
\$400,000
MLS 6810385 Residential
3918 44th Street
Pine River MN 56474



website: www.AffinityRealEstate.com | email: info@affinityrealestate.com | office: 218-237-3333 | fax: 218-237-3377



\$400,000
MLS 6810385 Residential
3918 44th Street
Pine River MN 56474



website: www.AffinityRealEstate.com | email: info@affinityrealestate.com | office: 218-237-3333 | fax: 218-237-3377



\$400,000
MLS 6810385 Residential
3918 44th Street
Pine River MN 56474



website: www.AffinityRealEstate.com | email: info@affinityrealestate.com | office: 218-237-3333 | fax: 218-237-3377



\$400,000
MLS 6810385 Residential
3918 44th Street
Pine River MN 56474