



MLS 6810389 Residential

\$359,000

1,584 sq ft
2 bedrooms
2 baths

15123 Wild Avenue
Brainerd MN 56401

Status: Active

Description:

Immaculate 2020 Single-Level Home in Spruce Reserve. Experience maintenance-free comfort at 15123 Wild Ave. Built by "Thomas Allen Homes" this "Cottage" model was built in 2020 and offers desirable step-free living with everything on the main level. Featuring 2 bedrooms, 2 bathrooms, and a 2-stall garage, the home has been gently lived in by its one owner and is fully MOVE-IN READY. As part of the exclusive Spruce Reserve community, you gain instant freedom as the HOA takes care of all lawn care and snow removal. Your easy-living dream starts here. Schedule your showing today!

Additional Details:

Year Built	2020
Lot Acres	0.26
Lot Dimensions	76x140x90x152
Garage Stalls	2
School District	896
Taxes	\$3,502
Taxes with Assessments	\$3,502
Tax Year	2025

Additional Features:

Fuel: Array **Heat:** Forced Air

Driving Directions:

From Brainerd, North past Ice Arena on Riverside, turn left on Beaver Dam Rd, turn Right on Northtown Street, turn Right on Wild Ave. to home on Right.



Listed By:
Edina Realty, Inc.

Affinity Real Estate Inc. participates in the Regional Multiple Listing Service of Minnesota, Inc Broker Reciprocity (sm) program, allowing us to display other broker's listings on our website. All properties are subject to prior sale, change or withdrawal.



Call Affinity Real Estate

218-237-3333

info@affinityrealestate.com



Affinity Real Estate - 600 Park Avenue South - Park Rapids MN 56470



website: www.AffinityRealEstate.com | email: info@affinityrealestate.com | office: 218-237-3333 | fax: 218-237-3377

Affinity
REAL ESTATE INC

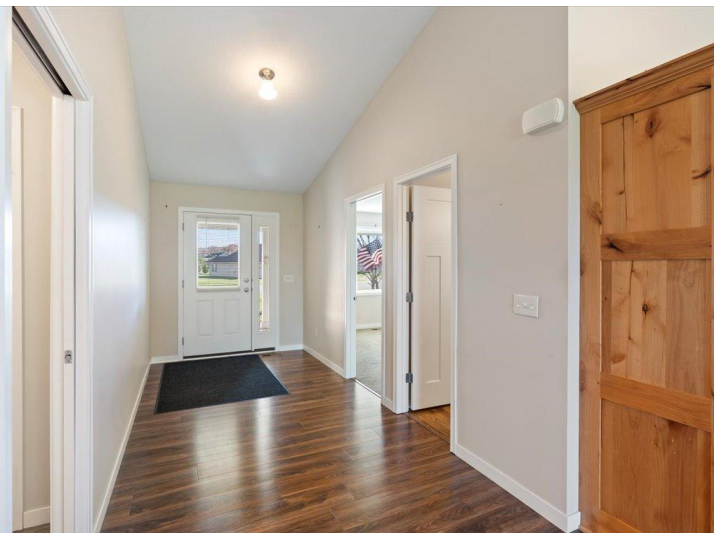
\$359,000
MLS 6810389 Residential
15123 Wild Avenue
Brainerd MN 56401



website: www.AffinityRealEstate.com | email: info@affinityrealestate.com | office: 218-237-3333 | fax: 218-237-3377



\$359,000
 MLS 6810389 Residential
 15123 Wild Avenue
 Brainerd MN 56401



website: www.AffinityRealEstate.com | email: info@affinityrealestate.com | office: 218-237-3333 | fax: 218-237-3377



\$359,000
 MLS 6810389 Residential
 15123 Wild Avenue
 Brainerd MN 56401



website: www.AffinityRealEstate.com | email: info@affinityrealestate.com | office: 218-237-3333 | fax: 218-237-3377



\$359,000
MLS 6810389 Residential
15123 Wild Avenue
Brainerd MN 56401



website: www.AffinityRealEstate.com | email: info@affinityrealestate.com | office: 218-237-3333 | fax: 218-237-3377



\$359,000
MLS 6810389 Residential
15123 Wild Avenue
Brainerd MN 56401