



MLS 6810782 Lake Home

\$849,900

2,428 sq ft
4 bedrooms
5 baths

8353 Whitefish Way
Pequot Lakes MN 56472

Waterfront: Clamshell

Status: Active

Description:

Welcome to Clamshell Beach Resort on the beautiful Whitefish Chain of Lakes. Experience maintenance-free lake living at this four-bedroom, five-bathroom cottage that offers all ten fractional ownership shares and exclusive access to everything that makes the resort special. The cabin features warm wood tones, hardwood floors, a stone gas fireplace, stainless steel appliances, and a relaxing four-season porch. The spacious primary suite adds a touch of luxury, with three additional bedrooms providing plenty of room for family and guests. Enjoy resort-style amenities including a pristine sand beach, outdoor pool and sport court, lakeside fire pit, dock, perfect for boating, fishing, swimming, sunset views and long summer days. Just minutes from Crosslake, Ideal, and Pequot Lakes where you'll have easy access to local shops, great dining, and premier golf. With rental potential and annual dues covering utilities, taxes, and fees, this is a worry-free opportunity to "live the lake life" without the upkeep and work.

Additional Details:

Year Built	2021
Lot Acres	12.5
Lot Dimensions	471 x 1210 x 466 x 1186
School District	186
Taxes	\$4,520
Taxes with Assessments	\$4,520
Tax Year	2026

Additional Features:

Fuel: Natural Gas **Heat:** Forced Air, Fireplace(s)

Driving Directions:

From Crosslake - South on County Rd 66 to West on County Rd 103 to North on County Rd 39 to West on Country Rd 16 to Right on S Clamshell Drive. First left, Whitefish Way will be on your left, the first residence as you pull in to the right.



Listed By:
eXp Realty

Affinity Real Estate Inc. participates in the Regional Multiple Listing Service of Minnesota, Inc Broker Reciprocity (sm) program, allowing us to display other broker's listings on our website. All properties are subject to prior sale, change or withdrawal.



Call Affinity Real Estate

218-237-3333

info@affinityrealestate.com



Affinity Real Estate - 600 Park Avenue South - Park Rapids MN 56470



website: www.AffinityRealEstate.com | email: info@affinityrealestate.com | office: 218-237-3333 | fax:218-237-3377



\$849,900
MLS 6810782 Lake Home
8353 Whitefish Way
Pequot Lakes MN 56472



website: www.AffinityRealEstate.com | email: info@affinityrealestate.com | office: 218-237-3333 | fax: 218-237-3377

Affinity
REAL ESTATE INC

\$849,900
MLS 6810782 Lake Home
8353 Whitefish Way
Pequot Lakes MN 56472



website: www.AffinityRealEstate.com | email: info@affinityrealestate.com | office: 218-237-3333 | fax:218-237-3377



\$849,900
MLS 6810782 Lake Home
8353 Whitefish Way
Pequot Lakes MN 56472



website: www.AffinityRealEstate.com | email: info@affinityrealestate.com | office: 218-237-3333 | fax:218-237-3377

Affinity
REAL ESTATE INC

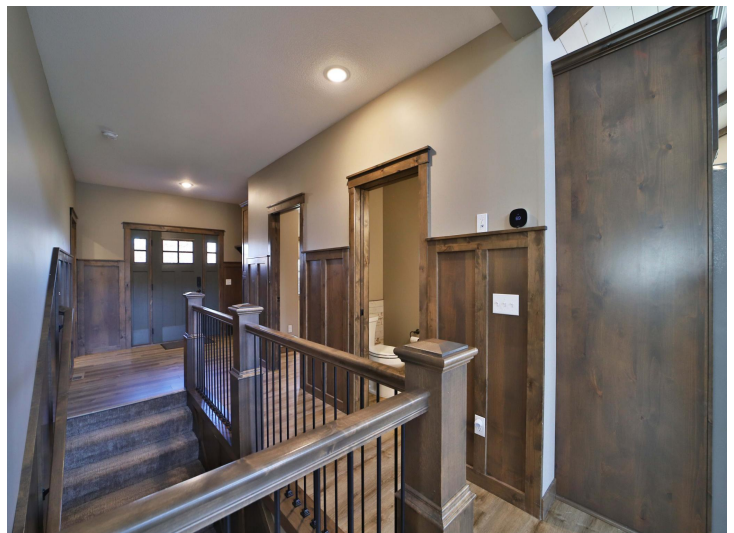
\$849,900
MLS 6810782 Lake Home
8353 Whitefish Way
Pequot Lakes MN 56472



website: www.AffinityRealEstate.com | email: info@affinityrealestate.com | office: 218-237-3333 | fax: 218-237-3377

Affinity
REAL ESTATE INC

\$849,900
MLS 6810782 Lake Home
8353 Whitefish Way
Pequot Lakes MN 56472



website: www.AffinityRealEstate.com | email: info@affinityrealestate.com | office: 218-237-3333 | fax:218-237-3377

Affinity
REAL ESTATE INC

\$849,900
MLS 6810782 Lake Home
8353 Whitefish Way
Pequot Lakes MN 56472



website: www.AffinityRealEstate.com | email: info@affinityrealestate.com | office: 218-237-3333 | fax:218-237-3377



\$849,900
MLS 6810782 Lake Home
8353 Whitefish Way
Pequot Lakes MN 56472



website: www.AffinityRealEstate.com | email: info@affinityrealestate.com | office: 218-237-3333 | fax:218-237-3377



\$849,900
MLS 6810782 Lake Home
8353 Whitefish Way
Pequot Lakes MN 56472



website: www.AffinityRealEstate.com | email: info@affinityrealestate.com | office: 218-237-3333 | fax:218-237-3377

Affinity
REAL ESTATE INC

\$849,900
MLS 6810782 Lake Home
8353 Whitefish Way
Pequot Lakes MN 56472



website: www.AffinityRealEstate.com | email: info@affinityrealestate.com | office: 218-237-3333 | fax:218-237-3377



\$849,900
MLS 6810782 Lake Home
8353 Whitefish Way
Pequot Lakes MN 56472



website: www.AffinityRealEstate.com | email: info@affinityrealestate.com | office: 218-237-3333 | fax: 218-237-3377

Affinity
REAL ESTATE INC

\$849,900
MLS 6810782 Lake Home
8353 Whitefish Way
Pequot Lakes MN 56472



website: www.AffinityRealEstate.com | email: info@affinityrealestate.com | office: 218-237-3333 | fax: 218-237-3377

Affinity
REAL ESTATE INC

\$849,900
MLS 6810782 Lake Home
8353 Whitefish Way
Pequot Lakes MN 56472