



MLS 6811194 Residential

\$524,900

3,148 sq ft
4 bedrooms
4 baths

10660 Saint Mathias Road
Brainerd MN 56401

Status: Active

Description:

Country Living Just Minutes from Brainerd/Baxter! Experience the perfect blend of peaceful country living and convenient location with this beautiful 4-bedroom, 4-bath home set on 3.28 acres of scenic land. Enjoy the quiet of nature while staying close to all the amenities of Brainerd/Baxter. Home Features: Open-concept main level with vaulted ceilings and a bright, spacious living room. Gourmet kitchen featuring a center island, stainless steel appliances, and pantry space. Master suite with a private bath and generous closet space. Main level laundry with a convenient half bath. Foyer entry with a massive closet for all your storage needs. Dining area that flows seamlessly to a large deck—perfect for entertaining or relaxing outdoors Lower Level: Expansive family room with a cozy gas fireplace. Dedicated office space ideal for working from home. Additional bedroom and bath space for guests or family. Large attached 3 stall garage and also a 44x44 detached shop that has in-floor heat and insulated for all the toys!! Exterior Highlights: 3.28 acres of country beauty with a paved driveway. Newer roof (2023). Large deck for entertaining and enjoying the outdoors. Convenient access to snowmobile and ATV trails—perfect for outdoor enthusiasts! If you've been searching for a home that offers space, comfort, and a touch of country charm without sacrificing convenience, this property is a must-see! Schedule your private showing today!

Additional Details:

Year Built	2003
Lot Acres	3.28
Lot Dimensions	See survey
Garage Stalls	10
School District	896
Taxes	\$3,473
Taxes with Assessments	\$3,498
Tax Year	2025

Additional Features:

Fuel: Array **Heat:** Forced Air

Driving Directions:

From Brainerd take Business 371 S to a Left onto Saint Mathias Road (County Road 11) to your 1st Left and follow dirt road to the 1st



Listed By:
Edina Realty, Inc.

Affinity Real Estate Inc. participates in the Regional Multiple Listing Service of Minnesota, Inc Broker Reciprocity (sm) program, allowing us to display other broker's listings on our website. All properties are subject to prior sale, change or withdrawal.



Call Affinity Real Estate

218-237-3333

info@affinityrealestate.com



Affinity Real Estate - 600 Park Avenue South - Park Rapids MN 56470



website: www.AffinityRealEstate.com | email: info@affinityrealestate.com | office: 218-237-3333 | fax: 218-237-3377



\$524,900

MLS 6811194 Residential
10660 Saint Mathias Road
Brainerd MN 56401



website: www.AffinityRealEstate.com | email: info@affinityrealestate.com | office: 218-237-3333 | fax: 218-237-3377

Affinity
REAL ESTATE INC

\$524,900
MLS 6811194 Residential
10660 Saint Mathias Road
Brainerd MN 56401



FLOOR 2

GROSS INTERNAL AREA
FLOOR 2: 1,100 sq. ft. TOTAL: 2,423 sq. ft.
TOTAL: 2,423 sq. ft.
EXCLUDED AREA: GARAGE: 3,600 sq. ft.
SIZES ARE APPROXIMATE AND NOT TO SCALE. SEE ARCHITECTURAL DRAWINGS FOR DETAILS.



FLOOR 1

GROSS INTERNAL AREA
FLOOR 1: 1,100 sq. ft. TOTAL: 2,423 sq. ft.
TOTAL: 2,423 sq. ft.
EXCLUDED AREA: GARAGE: 3,600 sq. ft.
SIZES ARE APPROXIMATE AND NOT TO SCALE. SEE ARCHITECTURAL DRAWINGS FOR DETAILS.



website: www.AffinityRealEstate.com | email: info@affinityrealestate.com | office: 218-237-3333 | fax: 218-237-3377



\$524,900
MLS 6811194 Residential
10660 Saint Mathias Road
Brainerd MN 56401



website: www.AffinityRealEstate.com | email: info@affinityrealestate.com | office: 218-237-3333 | fax: 218-237-3377



\$524,900
 MLS 6811194 Residential
 10660 Saint Mathias Road
 Brainerd MN 56401



website: www.AffinityRealEstate.com | email: info@affinityrealestate.com | office: 218-237-3333 | fax: 218-237-3377



\$524,900
 MLS 6811194 Residential
 10660 Saint Mathias Road
 Brainerd MN 56401



website: www.AffinityRealEstate.com | email: info@affinityrealestate.com | office: 218-237-3333 | fax: 218-237-3377

Affinity
REAL ESTATE INC

\$524,900
MLS 6811194 Residential
10660 Saint Mathias Road
Brainerd MN 56401



website: www.AffinityRealEstate.com | email: info@affinityrealestate.com | office: 218-237-3333 | fax: 218-237-3377

Affinity
REAL ESTATE INC

\$524,900
MLS 6811194 Residential
10660 Saint Mathias Road
Brainerd MN 56401



website: www.AffinityRealEstate.com | email: info@affinityrealestate.com | office: 218-237-3333 | fax: 218-237-3377

Affinity
REAL ESTATE INC

\$524,900
MLS 6811194 Residential
10660 Saint Mathias Road
Brainerd MN 56401



website: www.AffinityRealEstate.com | email: info@affinityrealestate.com | office: 218-237-3333 | fax: 218-237-3377



\$524,900
MLS 6811194 Residential
10660 Saint Mathias Road
Brainerd MN 56401



website: www.AffinityRealEstate.com | email: info@affinityrealestate.com | office: 218-237-3333 | fax: 218-237-3377



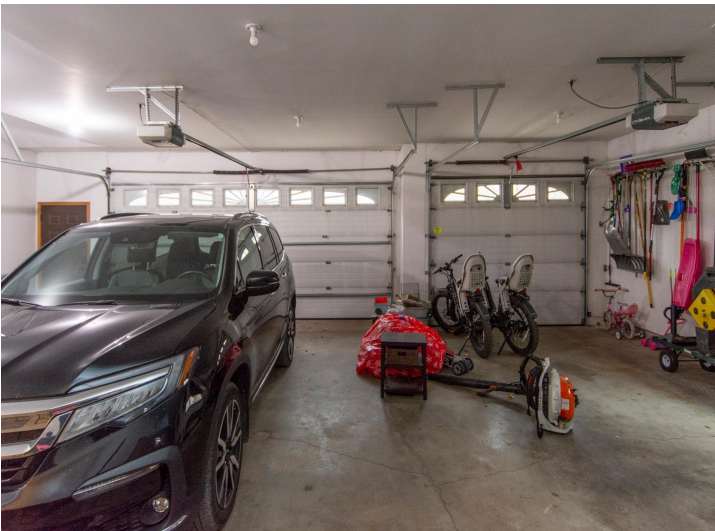
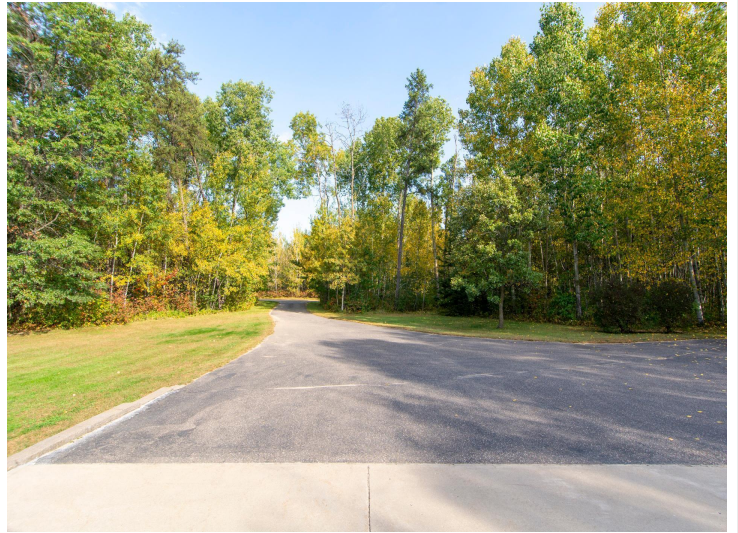
\$524,900
MLS 6811194 Residential
10660 Saint Mathias Road
Brainerd MN 56401



website: www.AffinityRealEstate.com | email: info@affinityrealestate.com | office: 218-237-3333 | fax: 218-237-3377

Affinity
REAL ESTATE INC

\$524,900
MLS 6811194 Residential
10660 Saint Mathias Road
Brainerd MN 56401



website: www.AffinityRealEstate.com | email: info@affinityrealestate.com | office: 218-237-3333 | fax: 218-237-3377



\$524,900
MLS 6811194 Residential
10660 Saint Mathias Road
Brainerd MN 56401