



MLS 6811628 Residential

\$340,000

3,461 sq ft
5 bedrooms
3 baths

463 Byes Avenue
Solway MN 56678

Status: Active

Description:

Discover this expansive 3,600+ sq. ft. residence, designed to impress with its stunning wall of windows, five bedrooms, three bathrooms, and two spacious living areas. A newly constructed patio welcomes you into the great room, where 16-foot vaulted ceilings and an impressive bank of windows seamlessly blend indoor and outdoor living.

The main level features a large living area with an oversized window, the primary suite, three additional bedrooms, and a convenient laundry room. The primary suite offers exceptional space, complete with two separate closets, a private deck with pergola, a jetted soaking tub, and tiled shower.

The fifth bedroom serves as a private suite, featuring its own three-quarter bath and enclosed deck ~ ideal for guests or multi-generational living. Upstairs, a generous living area includes three storage spaces, two window seats, and a cozy bar area tucked into the corner.

Set on a private 1.26-acre lot, this home is clad in timeless cedar siding and includes a detached garage. With its thoughtful design, natural light, and serene setting, this property offers comfort and ample space.

Additional Details:

Year Built	1996
Lot Acres	1.26
Lot Dimensions	243x300
Garage Stalls	2
School District	1386
Taxes	\$3,328
Taxes with Assessments	\$3,328
Tax Year	2025

Additional Features:

Basement: None **Fuel:** Array **Garage:** 2 **Heat:** Forced Air, Fireplace(s) **Sewer:** Private Sewer **Water:** Well **Air Conditioning:** Central Air

Driving Directions:

Get to Solway on Hwy 2, head north on Byes Ave NW about 3 blocks to home on the left (west) side of the road.



Listed By:
Lake-N-Woods Realty

Affinity Real Estate Inc. participates in the Regional Multiple Listing Service of Minnesota, Inc Broker Reciprocity (sm) program, allowing us to display other broker's listings on our website. All properties are subject to prior sale, change or withdrawal.



Call Affinity Real Estate

218-237-3333

info@affinityrealestate.com



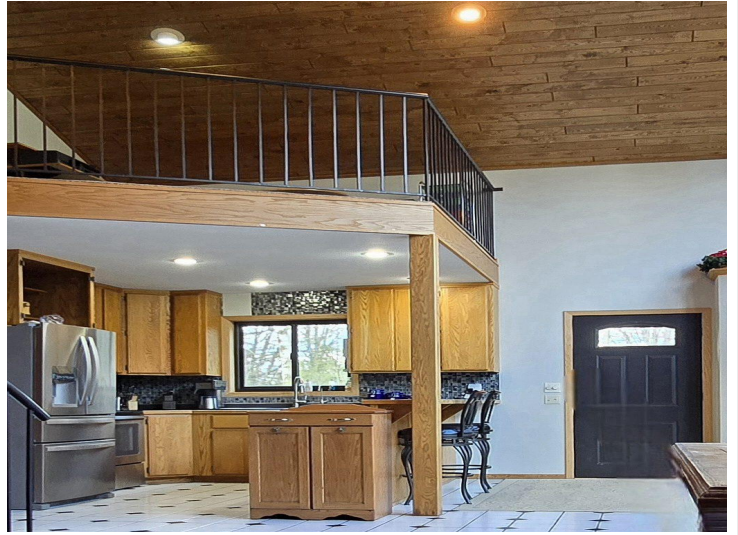
Affinity Real Estate - 600 Park Avenue South - Park Rapids MN 56470



website: www.AffinityRealEstate.com | email: info@affinityrealestate.com | office: 218-237-3333 | fax: 218-237-3377

Affinity
REAL ESTATE INC

\$340,000
MLS 6811628 Residential
463 Byes Avenue
Solway MN 56678



website: www.AffinityRealEstate.com | email: info@affinityrealestate.com | office: 218-237-3333 | fax: 218-237-3377

Affinity
REAL ESTATE INC

\$340,000
MLS 6811628 Residential
463 Byes Avenue
Solway MN 56678



website: www.AffinityRealEstate.com | email: info@affinityrealestate.com | office: 218-237-3333 | fax: 218-237-3377

Affinity
REAL ESTATE INC

\$340,000
MLS 6811628 Residential
463 Byes Avenue
Solway MN 56678



website: www.AffinityRealEstate.com | email: info@affinityrealestate.com | office: 218-237-3333 | fax: 218-237-3377



\$340,000
MLS 6811628 Residential
463 Byes Avenue
Solway MN 56678



website: www.AffinityRealEstate.com | email: info@affinityrealestate.com | office: 218-237-3333 | fax: 218-237-3377



\$340,000
 MLS 6811628 Residential
 463 Byes Avenue
 Solway MN 56678



website: www.AffinityRealEstate.com | email: info@affinityrealestate.com | office: 218-237-3333 | fax: 218-237-3377



\$340,000
 MLS 6811628 Residential
 463 Byes Avenue
 Solway MN 56678



website: www.AffinityRealEstate.com | email: info@affinityrealestate.com | office: 218-237-3333 | fax: 218-237-3377



\$340,000
MLS 6811628 Residential
463 Byes Avenue
Solway MN 56678