



MLS 6811871 Residential

\$249,900

880 sq ft
2 bedrooms
2 baths

12260 Far Portage Drive
Park Rapids MN 56470

Status: Active

Description:

It's a Shouse! Featuring a 30x40 heated and finished shop in front and an 880 Sqft of living space in the back. Built in 2018 and sitting on 5 acres in the heart of lakes country. Two Bed, 1.5 bath, Large living space with open kitchen and tall ceilings. Steel roof and siding vinyl windows, in floor heat, on demand water heater, and a mini split in the house and shop for the shoulder seasons. 5 miles north of Park Rapids. Forest Riders Atv/snowmobile Trail is only 1/2 mile down the road leading straight into The Two Inlets state forest.

A peaceful and private setting just across the way from Portage Lake and on the doorstep of the Northwoods.

Additional Details:

Year Built	2018
Lot Acres	5
Lot Dimensions	581x235
Garage Stalls	2
School District	309
Taxes	\$1,279
Taxes with Assessments	\$1,500
Tax Year	2025

Additional Features:

Fuel: Propane **Heat:** Ductless Mini-Split, Radiant Floor

Driving Directions:

From Park Rapids: Head North on US-71 for 4.1 miles, take a left onto Far Portage Drive and follow for 0.7 miles, take a right at the driveway and follow for 250 feet to property on the right.



Listed By:
Coldwell Banker Crown Realtors

Affinity Real Estate Inc. participates in the Regional Multiple Listing Service of Minnesota, Inc Broker Reciprocity (sm) program, allowing us to display other broker's listings on our website. All properties are subject to prior sale, change or withdrawal.



Call Affinity Real Estate

218-237-3333

info@affinityrealestate.com



Affinity Real Estate - 600 Park Avenue South - Park Rapids MN 56470



website: www.AffinityRealEstate.com | email: info@affinityrealestate.com | office: 218-237-3333 | fax: 218-237-3377



\$249,900
 MLS 6811871 Residential
 12260 Far Portage Drive
 Park Rapids MN 56470



website: www.AffinityRealEstate.com | email: info@affinityrealestate.com | office: 218-237-3333 | fax: 218-237-3377

Affinity
REAL ESTATE INC

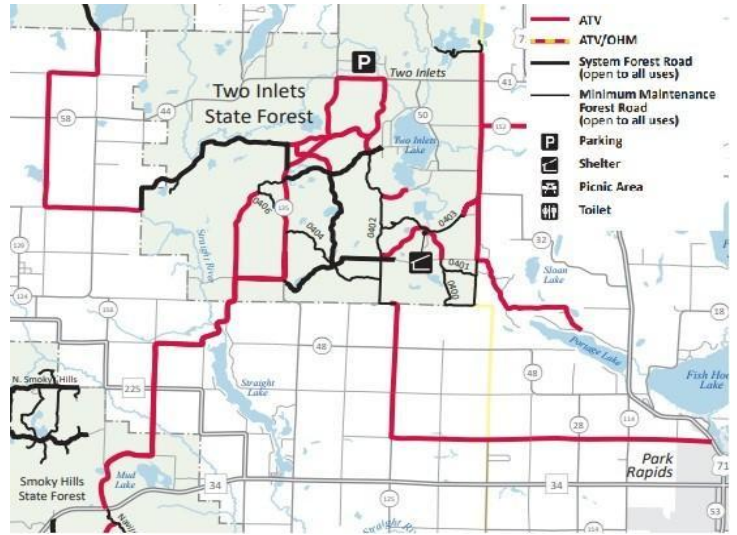
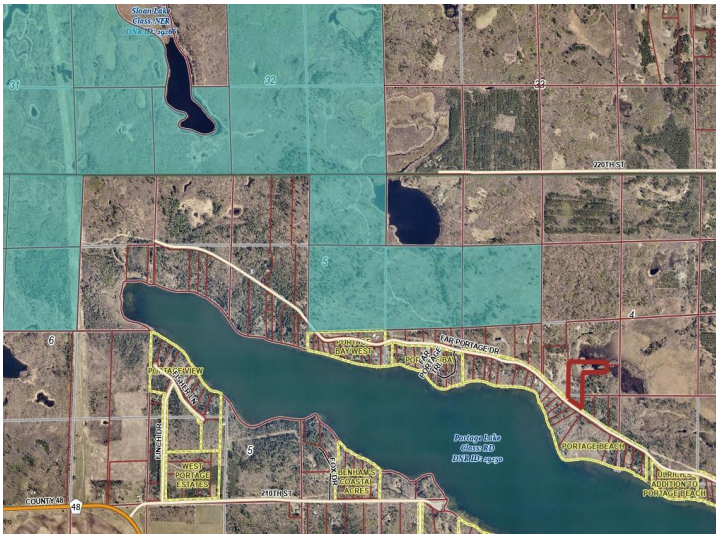
\$249,900
MLS 6811871 Residential
12260 Far Portage Drive
Park Rapids MN 56470



website: www.AffinityRealEstate.com | email: info@affinityrealestate.com | office: 218-237-3333 | fax: 218-237-3377



\$249,900
 MLS 6811871 Residential
 12260 Far Portage Drive
 Park Rapids MN 56470



website: www.AffinityRealEstate.com | email: info@affinityrealestate.com | office: 218-237-3333 | fax: 218-237-3377



\$249,900

MLS 6811871 Residential
12260 Far Portage Drive
Park Rapids MN 56470