



MLS 6811888 Commercial

**\$1,700,000**

15115 Edgewood Drive  
Brainerd MN 56401

Status: Active

**Description:**

After years of serving the community, a beloved local catering business is relocating, opening the door to a rare opportunity for an entrepreneur to make their mark in the vibrant restaurant scene. Nestled along the bustling Hwy 371 corridor in Baxter, the former Prairie Bay building is ready to welcome a new chapter. This pristine restaurant offers endless potential with multiple stylish dining areas, a charming bar with additional seating, and a spacious, fully-equipped commercial kitchen featuring a pizza oven. Whether you're looking to create a cozy dining experience or a dynamic culinary hub, this location is primed for success.

**Additional Details:**

Year Built	2003
Lot Acres	1.77
Lot Dimensions	286x110x166x263x275
School District	181
Taxes	\$26,960
Taxes with Assessments	\$26,960
Tax Year	2025

**Additional Features:**

**Fuel:** Natural Gas **Heat:** Forced Air

**Driving Directions:**

From the Baxter Hwy 210/371 intersection - North on Hwy 371 - West on Wolda Road - North on Edgewood Drive - Left at the North end of the Starbucks Retail Center - Straight back to property



Listed By:  
Close-Converse Commercial Prop

Affinity Real Estate Inc. participates in the Regional Multiple Listing Service of Minnesota, Inc Broker Reciprocity (sm) program, allowing us to display other broker's listings on our website. All properties are subject to prior sale, change or withdrawal.



**Call Affinity Real Estate**

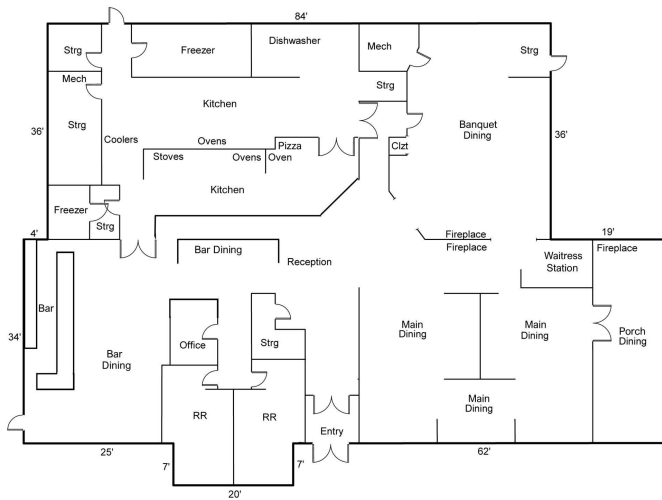
**218-237-3333**

**info@affinityrealestate.com**



**Affinity Real Estate - 600 Park Avenue South - Park Rapids MN 56470**





website: [www.AffinityRealEstate.com](http://www.AffinityRealEstate.com) | email: [info@affinityrealestate.com](mailto:info@affinityrealestate.com) | office: 218-237-3333 | fax: 218-237-3377

**Affinity**  
REAL ESTATE INC

**\$1,700,000**

MLS 6811888 Commercial  
15115 Edgewood Drive  
Brainerd MN 56401





website: [www.AffinityRealEstate.com](http://www.AffinityRealEstate.com) | email: [info@affinityrealestate.com](mailto:info@affinityrealestate.com) | office: 218-237-3333 | fax: 218-237-3377

**Affinity**  
REAL ESTATE INC

**\$1,700,000**  
MLS 6811888 Commercial  
15115 Edgewood Drive  
Brainerd MN 56401





website: [www.AffinityRealEstate.com](http://www.AffinityRealEstate.com) | email: [info@affinityrealestate.com](mailto:info@affinityrealestate.com) | office: 218-237-3333 | fax: 218-237-3377



**\$1,700,000**  
 MLS 6811888 Commercial  
 15115 Edgewood Drive  
 Brainerd MN 56401





website: [www.AffinityRealEstate.com](http://www.AffinityRealEstate.com) | email: [info@affinityrealestate.com](mailto:info@affinityrealestate.com) | office: 218-237-3333 | fax: 218-237-3377



**\$1,700,000**  
 MLS 6811888 Commercial  
 15115 Edgewood Drive  
 Brainerd MN 56401





website: [www.AffinityRealEstate.com](http://www.AffinityRealEstate.com) | email: [info@affinityrealestate.com](mailto:info@affinityrealestate.com) | office: 218-237-3333 | fax: 218-237-3377

**Affinity**  
REAL ESTATE INC

**\$1,700,000**  
MLS 6811888 Commercial  
15115 Edgewood Drive  
Brainerd MN 56401