



MLS 6811986 Lake Home

**\$415,000**

2,276 sq ft  
3 bedrooms  
1 baths

34307 Basswood Lake Road  
Ponsford MN 56575

Waterfront: Big Basswood

Status: Active

**Description:**

Big Basswood Lake home on 14 acres with 600' of shoreline. The home has 3 bedrooms, 1 full bathroom, 20'x24' heated attached garage with an amazing view of the lake. This property has a 24'x70' heated work shop with an outdoor boiler and 30'x42' detached garage. This home is next to White Earth State Forest, Two Inlets State Forest, and the snowmobile/ATV trail system. The outdoor enthusiast can enjoy the fishing, hunting, ATV riding, snowmobiling, and hiking. It's roughly 8 miles West of the town Two Inlets.

**Additional Details:**

Year Built	1972
Lot Acres	14
Lot Dimensions	1090x597x1042x538
Garage Stalls	1
School District	309
Taxes	\$4,040
Taxes with Assessments	\$4,040
Tax Year	2025

**Additional Features:**

**Basement:** Block, Full, Owner Access, Unfinished, Walkout **Fuel:** Oil, Wood **Garage:** 1 **Heat:** Boiler, Forced Air, Hot Water, Outdoor Boiler, Wood Stove **Sewer:** Tank with Drainage Field **Water:** 4-Inch Submersible, Drilled **Air Conditioning:** None

**Driving Directions:**

From Park Rapids: Head North on 71, turn left onto 41/44, turn right on 500th Ave and follow to Basswood Lake Road to property on right #34307



Listed By:  
Coldwell Banker Crown Realtors

Affinity Real Estate Inc. participates in the Regional Multiple Listing Service of Minnesota, Inc Broker Reciprocity (sm) program, allowing us to display other broker's listings on our website. All properties are subject to prior sale, change or withdrawal.



Call Affinity Real Estate

**218-237-3333**

[info@affinityrealestate.com](mailto:info@affinityrealestate.com)



Affinity Real Estate - 600 Park Avenue South - Park Rapids MN 56470



website: [www.AffinityRealEstate.com](http://www.AffinityRealEstate.com) | email: [info@affinityrealestate.com](mailto:info@affinityrealestate.com) | office: 218-237-3333 | fax: 218-237-3377

**Affinity**  
REAL ESTATE INC

**\$415,000**  
MLS 6811986 Lake Home  
34307 Basswood Lake Road  
Ponsford MN 56575



website: [www.AffinityRealEstate.com](http://www.AffinityRealEstate.com) | email: [info@affinityrealestate.com](mailto:info@affinityrealestate.com) | office: 218-237-3333 | fax:218-237-3377



**\$415,000**  
MLS 6811986 Lake Home  
34307 Basswood Lake Road  
Ponsford MN 56575



website: [www.AffinityRealEstate.com](http://www.AffinityRealEstate.com) | email: [info@affinityrealestate.com](mailto:info@affinityrealestate.com) | office: 218-237-3333 | fax:218-237-3377

**Affinity**  
REAL ESTATE INC

**\$415,000**  
MLS 6811986 Lake Home  
34307 Basswood Lake Road  
Ponsford MN 56575



website: [www.AffinityRealEstate.com](http://www.AffinityRealEstate.com) | email: [info@affinityrealestate.com](mailto:info@affinityrealestate.com) | office: 218-237-3333 | fax:218-237-3377

**Affinity**  
REAL ESTATE INC

**\$415,000**  
MLS 6811986 Lake Home  
34307 Basswood Lake Road  
Ponsford MN 56575



website: [www.AffinityRealEstate.com](http://www.AffinityRealEstate.com) | email: [info@affinityrealestate.com](mailto:info@affinityrealestate.com) | office: 218-237-3333 | fax:218-237-3377

**Affinity**  
REAL ESTATE INC

**\$415,000**  
MLS 6811986 Lake Home  
34307 Basswood Lake Road  
Ponsford MN 56575



website: [www.AffinityRealEstate.com](http://www.AffinityRealEstate.com) | email: [info@affinityrealestate.com](mailto:info@affinityrealestate.com) | office: 218-237-3333 | fax:218-237-3377

**Affinity**  
REAL ESTATE INC

**\$415,000**  
MLS 6811986 Lake Home  
34307 Basswood Lake Road  
Ponsford MN 56575



website: [www.AffinityRealEstate.com](http://www.AffinityRealEstate.com) | email: [info@affinityrealestate.com](mailto:info@affinityrealestate.com) | office: 218-237-3333 | fax:218-237-3377

**Affinity**  
REAL ESTATE INC

**\$415,000**  
MLS 6811986 Lake Home  
34307 Basswood Lake Road  
Ponsford MN 56575



website: [www.AffinityRealEstate.com](http://www.AffinityRealEstate.com) | email: [info@affinityrealestate.com](mailto:info@affinityrealestate.com) | office: 218-237-3333 | fax:218-237-3377

**Affinity**  
REAL ESTATE INC

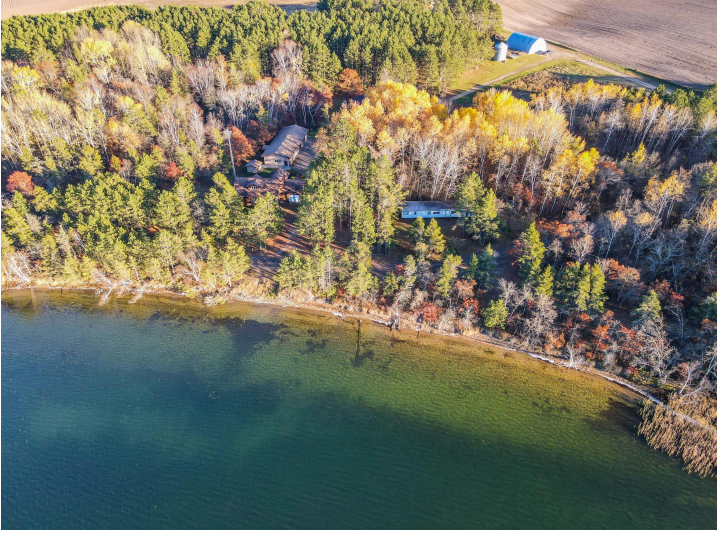
**\$415,000**  
MLS 6811986 Lake Home  
34307 Basswood Lake Road  
Ponsford MN 56575



website: [www.AffinityRealEstate.com](http://www.AffinityRealEstate.com) | email: [info@affinityrealestate.com](mailto:info@affinityrealestate.com) | office: 218-237-3333 | fax:218-237-3377

**Affinity**  
REAL ESTATE INC

**\$415,000**  
MLS 6811986 Lake Home  
34307 Basswood Lake Road  
Ponsford MN 56575



website: [www.AffinityRealEstate.com](http://www.AffinityRealEstate.com) | email: [info@affinityrealestate.com](mailto:info@affinityrealestate.com) | office: 218-237-3333 | fax:218-237-3377



**\$415,000**  
MLS 6811986 Lake Home  
34307 Basswood Lake Road  
Ponsford MN 56575



website: [www.AffinityRealEstate.com](http://www.AffinityRealEstate.com) | email: [info@affinityrealestate.com](mailto:info@affinityrealestate.com) | office: 218-237-3333 | fax: 218-237-3377

**Affinity**  
REAL ESTATE INC

**\$415,000**  
MLS 6811986 Lake Home  
34307 Basswood Lake Road  
Ponsford MN 56575



website: [www.AffinityRealEstate.com](http://www.AffinityRealEstate.com) | email: [info@affinityrealestate.com](mailto:info@affinityrealestate.com) | office: 218-237-3333 | fax:218-237-3377



**\$415,000**  
MLS 6811986 Lake Home  
34307 Basswood Lake Road  
Ponsford MN 56575



website: [www.AffinityRealEstate.com](http://www.AffinityRealEstate.com) | email: [info@affinityrealestate.com](mailto:info@affinityrealestate.com) | office: 218-237-3333 | fax:218-237-3377



**\$415,000**  
MLS 6811986 Lake Home  
34307 Basswood Lake Road  
Ponsford MN 56575