



MLS 6812065 Land

**\$99,500**

2.33 Acres  
Finished Lot(s)

12049 Firefly Lane  
Brainerd MN 56401

Status: Active

**Description:**

Northwest corner of parcel goes approximately 40 feet into the trees, West of the wood fence. Contract terms are available and Tract B may be purchased for an additional 90k.

**Additional Details:**

Lot Acres	2.33
Lot Dimensions	470x300x179x320x200
School District	181
Taxes	\$154
Taxes with Assessments	\$154
Tax Year	2025

**Additional Features:**

**Driving Directions:**

371 N to Pine Beach Road (County Road 77), follow Pine Beach Road to the Legacy Golf Course, take Left on to Bass Lake Road. Bass Lake Road turns into 13th Avenue SW, turn right on 120th, left onto Firefly.



Listed By:  
Get You Moved Realty

Affinity Real Estate Inc. participates in the Regional Multiple Listing Service of Minnesota, Inc Broker Reciprocity (sm) program, allowing us to display other broker's listings on our website. All properties are subject to prior sale, change or withdrawal.



Call Affinity Real Estate

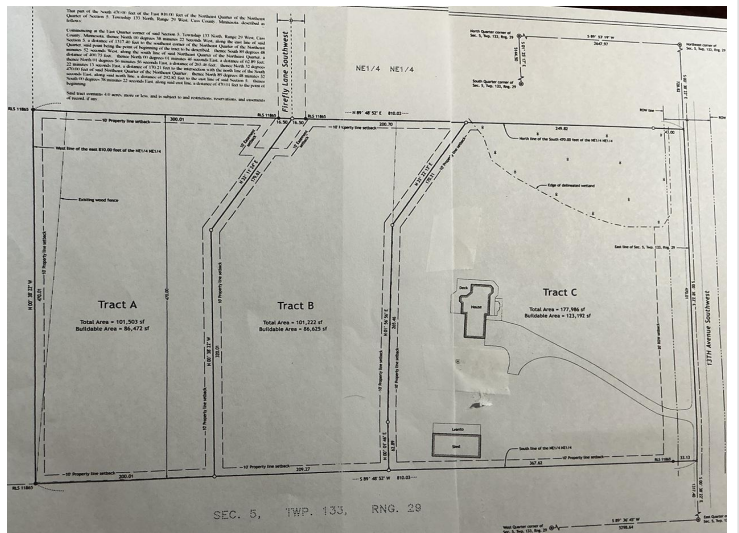
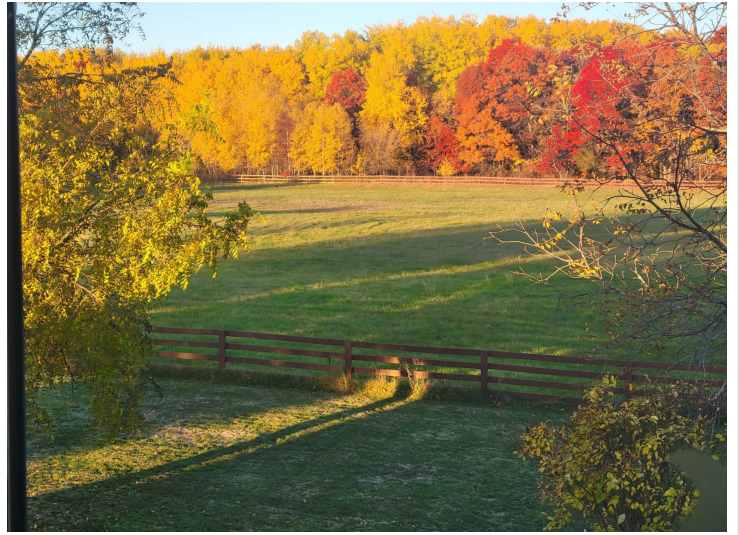
**218-237-3333**

[info@affinityrealestate.com](mailto:info@affinityrealestate.com)



Affinity Real Estate - 600 Park Avenue South - Park Rapids MN 56470





website: [www.AffinityRealEstate.com](http://www.AffinityRealEstate.com) | email: [info@affinityrealestate.com](mailto:info@affinityrealestate.com) | office: 218-237-3333 | fax: 218-237-3377



**\$99,500**  
MLS 6812065 Land  
12049 Firefly Lane  
Brainerd MN 56401