



MLS 6812296 Lake Home

**\$700,000**

1,738 sq ft  
3 bedrooms  
2 baths

8038 Lost Lake Road  
Nisswa MN 56468

Waterfront: Gull

Status: Active

#### Description:

New one level, maintenance free living on

The Gull Lake Chain with Your Own Boat Slip. Nestled in the exclusive Spider Lake Preserve development, this stunning home offers immediate access to the Gull Lake Chain of Lakes via your very own boat slip. Located on the 7th of 9 total lots within this private community, this is a rare opportunity to live in a peaceful, lakefront setting.

Spider Lake Preserve is a small, single-family community in the City of Lake Shore, spanning 35 acres of beautifully grounds. Residents enjoy a prime location, near Lost Lake Lodge, Causeway on Gull, Bar Harbor, Zorbaz, and several golf courses.

On-site amenities include a private dock area, lakeside patio with firepit, pickleball court, walking trails, and beautiful lake homes built by Thomas Allen Homes.


This exceptional one level living home features 3-bedrooms (or discuss our 4-bedroom plan with bonus room) and 2 bathrooms (optional 3rd with bonus room). You'll appreciate the attention to detail, with a living room fireplace, tile shower, custom cabinetry, 9' walls plus vaulted main living space. Enjoy outdoor living with a sunroom and patio area out the back, fully landscaped for maximum enjoyment.

This lot is arguable the nicest lot in the community and the last lot appropriate for a one level home.

Are you ready to begin your Gull Lake adventure?

#### Additional Details:

Year Built	2026
Lot Acres	0.12
Lot Dimensions	64x83 Build Pad approx 32 acre shared
Garage Stalls	3
School District	181
Taxes	\$6,112
Taxes with Assessments	\$6,178

1  Listed By: 2025  
Edina Realty, Inc.

#### Additional Features:

Affinity Real Estate Inc. participates in the Regional Multiple Listing Service of Minnesota, Inc Broker Reciprocity (sm) program, allowing us to display other broker's listings on our website. All properties are subject to prior sale, change or withdrawal.

#### Driving Directions:



Call Affinity Real Estate

**218-237-3333**

[info@affinityrealestate.com](mailto:info@affinityrealestate.com)

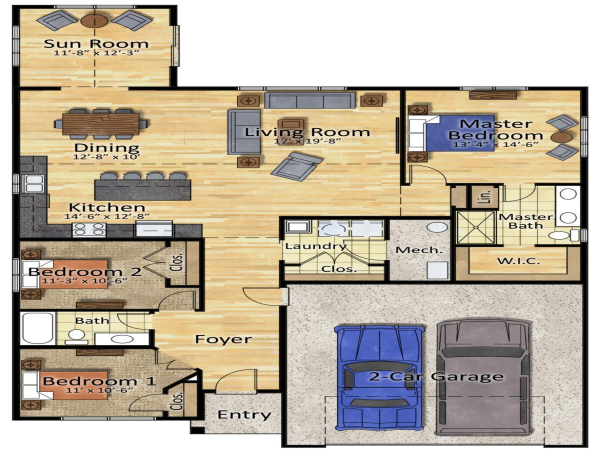
Fireplace, Sunroom, Sewer/Connected, Water, Shared System, Well, Air



Affinity Real Estate - 600 Park Avenue South - Park Rapids MN 56470

From Highway 371 in Nisswa, take Country Rd 77 West to Zorbaz. Turn Right on Lost Lake Road to Community on your right.





Floor Plan

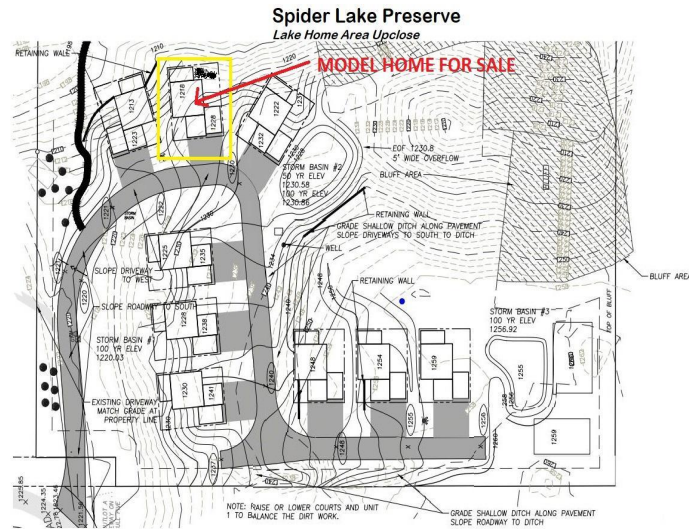


website: [www.AffinityRealEstate.com](http://www.AffinityRealEstate.com) | email: [info@affinityrealestate.com](mailto:info@affinityrealestate.com) | office: 218-237-3333 | fax: 218-237-3377

**Affinity**  
REAL ESTATE INC

**\$700,000**  
MLS 6812296 Lake Home  
8038 Lost Lake Road  
Nisswa MN 56468





website: [www.AffinityRealEstate.com](http://www.AffinityRealEstate.com) | email: [info@affinityrealestate.com](mailto:info@affinityrealestate.com) | office: 218-237-3333 | fax: 218-237-3377

**Affinity**  
REAL ESTATE INC

**\$700,000**  
MLS 6812296 Lake Home  
8038 Lost Lake Road  
Nisswa MN 56468





website: [www.AffinityRealEstate.com](http://www.AffinityRealEstate.com) | email: [info@affinityrealestate.com](mailto:info@affinityrealestate.com) | office: 218-237-3333 | fax: 218-237-3377

**Affinity**  
REAL ESTATE INC

**\$700,000**  
MLS 6812296 Lake Home  
8038 Lost Lake Road  
Nisswa MN 56468





website: [www.AffinityRealEstate.com](http://www.AffinityRealEstate.com) | email: [info@affinityrealestate.com](mailto:info@affinityrealestate.com) | office: 218-237-3333 | fax: 218-237-3377

**Affinity**  
REAL ESTATE INC

**\$700,000**  
MLS 6812296 Lake Home  
8038 Lost Lake Road  
Nisswa MN 56468



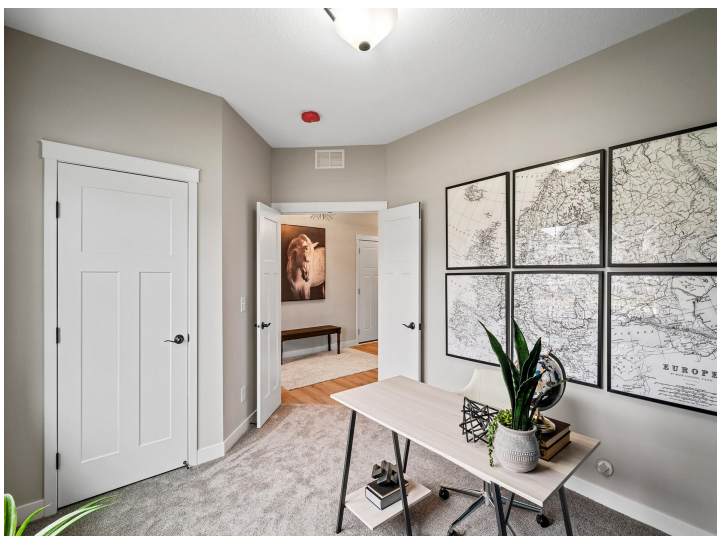
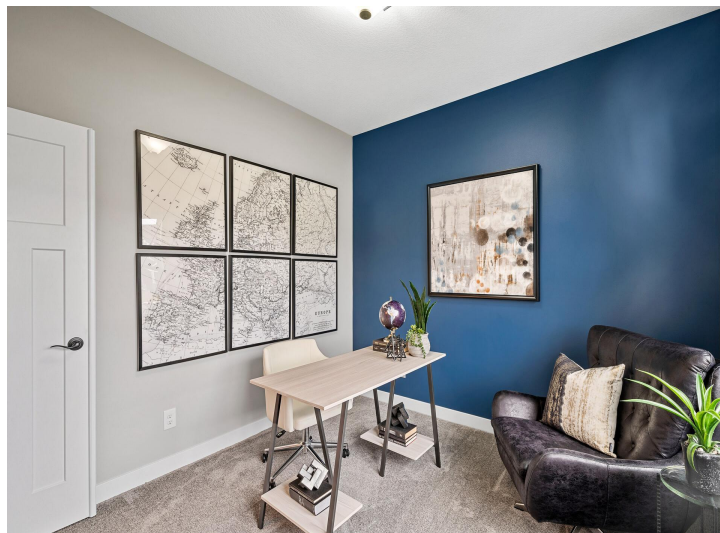


website: [www.AffinityRealEstate.com](http://www.AffinityRealEstate.com) | email: [info@affinityrealestate.com](mailto:info@affinityrealestate.com) | office: 218-237-3333 | fax: 218-237-3377

**Affinity**  
REAL ESTATE INC

**\$700,000**  
MLS 6812296 Lake Home  
8038 Lost Lake Road  
Nisswa MN 56468



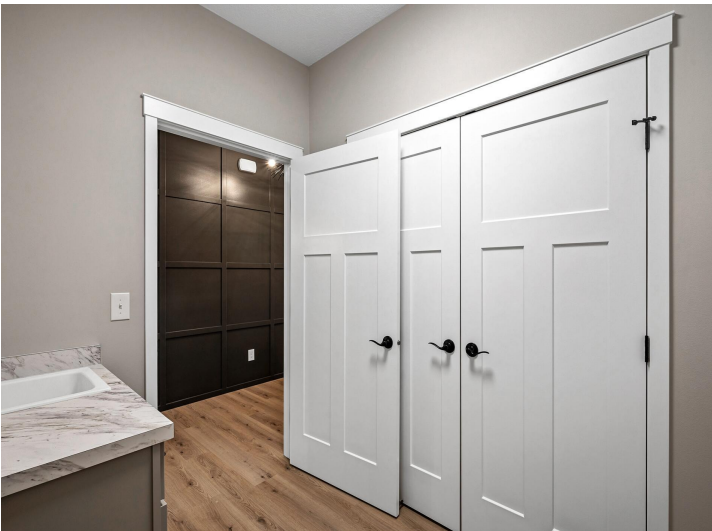


website: [www.AffinityRealEstate.com](http://www.AffinityRealEstate.com) | email: [info@affinityrealestate.com](mailto:info@affinityrealestate.com) | office: 218-237-3333 | fax: 218-237-3377

**Affinity**  
REAL ESTATE INC

**\$700,000**  
MLS 6812296 Lake Home  
8038 Lost Lake Road  
Nisswa MN 56468





website: [www.AffinityRealEstate.com](http://www.AffinityRealEstate.com) | email: [info@affinityrealestate.com](mailto:info@affinityrealestate.com) | office: 218-237-3333 | fax: 218-237-3377

**Affinity**  
REAL ESTATE INC

**\$700,000**  
MLS 6812296 Lake Home  
8038 Lost Lake Road  
Nisswa MN 56468