



MLS 6812472 Residential

**\$249,000**

1,253 sq ft  
4 bedrooms  
1 baths

47011 Niemi Drive  
Osage MN 56570

Status: Active

**Description:**

Tucked in the Smoky Hills, this 4-bedroom, 1-bath farmhouse sits on 2.5 acres and borders State Land, giving you instant access to endless trails, wildlife, and privacy. Bass Lake's sandy swimming beach and public access (Chilton Park) is just up the road, with lake views visible right from the driveway. This is the classic "Up North" cabin so many people seek. The garage features a new roof and siding, and inside the home you'll find a main-floor bedroom and bath, plus three additional bedrooms and a family room upstairs. Whether you want a country home, hunting cabin, or investment property, this place checks all the boxes. Schedule a showing today! Owner/agent.

**Additional Details:**

Year Built	1940
Lot Acres	2.5
Lot Dimensions	irr
Garage Stalls	2
School District	1384
Taxes	\$1,292
Taxes with Assessments	\$1,292
Tax Year	2025

**Additional Features:**

**Basement:** Block **Fuel:** Array **Garage:** 2 **Heat:** Forced Air **Sewer:** Private Sewer **Water:** Well **Air Conditioning:** Central Air

**Driving Directions:**

Highway 34 to Co 39, take a right on Niemi Dr and first home on left.



Listed By:  
Re/Max Lakes Region

Affinity Real Estate Inc. participates in the Regional Multiple Listing Service of Minnesota, Inc Broker Reciprocity (sm) program, allowing us to display other broker's listings on our website. All properties are subject to prior sale, change or withdrawal.



**Call Affinity Real Estate**

**218-237-3333**

**info@affinityrealestate.com**



**Affinity Real Estate - 600 Park Avenue South - Park Rapids MN 56470**



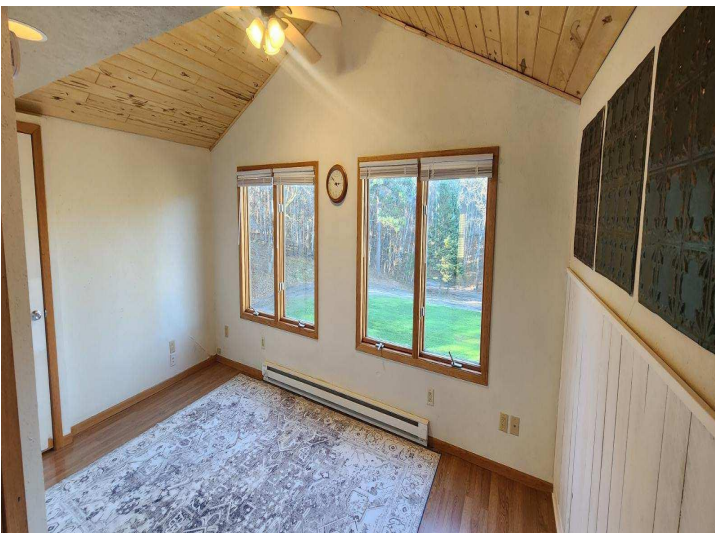


website: [www.AffinityRealEstate.com](http://www.AffinityRealEstate.com) | email: [info@affinityrealestate.com](mailto:info@affinityrealestate.com) | office: 218-237-3333 | fax: 218-237-3377

**Affinity**  
REAL ESTATE INC

**\$249,000**  
MLS 6812472 Residential  
47011 Niemi Drive  
Osage MN 56570





website: [www.AffinityRealEstate.com](http://www.AffinityRealEstate.com) | email: [info@affinityrealestate.com](mailto:info@affinityrealestate.com) | office: 218-237-3333 | fax: 218-237-3377

**Affinity**  
REAL ESTATE INC

**\$249,000**  
MLS 6812472 Residential  
47011 Niemi Drive  
Osage MN 56570





website: [www.AffinityRealEstate.com](http://www.AffinityRealEstate.com) | email: [info@affinityrealestate.com](mailto:info@affinityrealestate.com) | office: 218-237-3333 | fax: 218-237-3377



**\$249,000**  
MLS 6812472 Residential  
47011 Niemi Drive  
Osage MN 56570





website: [www.AffinityRealEstate.com](http://www.AffinityRealEstate.com) | email: [info@affinityrealestate.com](mailto:info@affinityrealestate.com) | office: 218-237-3333 | fax: 218-237-3377



**\$249,000**  
MLS 6812472 Residential  
47011 Niemi Drive  
Osage MN 56570



website: [www.AffinityRealEstate.com](http://www.AffinityRealEstate.com) | email: [info@affinityrealestate.com](mailto:info@affinityrealestate.com) | office: 218-237-3333 | fax: 218-237-3377



**\$249,000**  
MLS 6812472 Residential  
47011 Niemi Drive  
Osage MN 56570