



MLS 6813046 Lake Home

\$2,650,000

4,713 sq ft
6 bedrooms
4 baths

15464 Birch Narrows Road
Crosslake MN 56442

Waterfront: Daggett

Status: Active

Description:

Bring your friends and family to this stunning lake property on the Whitefish Chain. Plan to be wowed with the views, the interior design, the layout and the amenities. Vaulted ceilings, log beams, natural woodwork, antler chandeliers and incredible natural light all pour into the open concept and connected entertaining spaces. The kitchen has two islands, a stone and wood bar, large dining area open to the family room and sitting area, flanked by two fireplaces. Spill out to the large deck to enjoy incredible water views and sunsets in a prime location on Daggett Lake. This amazing home sleeps 26 with 4 bedrooms in main cabin that include a main level primary, main level guest room, lower-level bunk room and an upper-level bunkroom. Main floor primary suite has a dual sided fireplace, primary bath with enormous steam shower, dual sinks and soaking tub. A 5th bedroom option and 4th bathroom are located in the 900 square foot garage guest space complete with gaming systems, pool/ping pong table and more. A 6th non-conforming bedroom is in the adorable 330 square foot boat house with a living space and lakeside porch. The home features a 6-person hot tub, 2 docks, plenty of boat parking, room for water toys, great storage, fire pit and unforgettable water views and world class fishing. Minutes to Crosslake restaurants, shopping, golf and ice cream. 5-Star Living! All interior furnishings are available to purchase. New roofs, mechanicals and septic.


Additional Details:

Year Built	1998
Lot Acres	0.55
Lot Dimensions	Irregular
Garage Stalls	4
School District	186
Taxes	\$9,424
Taxes with Assessments	\$9,449
Tax Year	2025

Additional Features:

Basement: Block, Daylight/Lookout Windows, Egress Window(s), Finished, Full, Storage Space, Walkout **Fuel:** Natural Gas **Garage:** 4 **Heat:** Forced Air, Fireplace(s) **Sewer:** Septic System Compliant - Yes, Tank with Drainage Field **Water:** Well **Air Conditioning:** Central Air

Driving Directions:

Listing by  vs Road 1 left onto Birch Narrows Road, home on the left Coldwell Banker Realty

Affinity Real Estate Inc. participates in the Regional Multiple Listing Service of Minnesota, Inc Broker Reciprocity (sm) program, allowing us to display other broker's listings on our website. All properties are subject to prior sale, change or withdrawal.



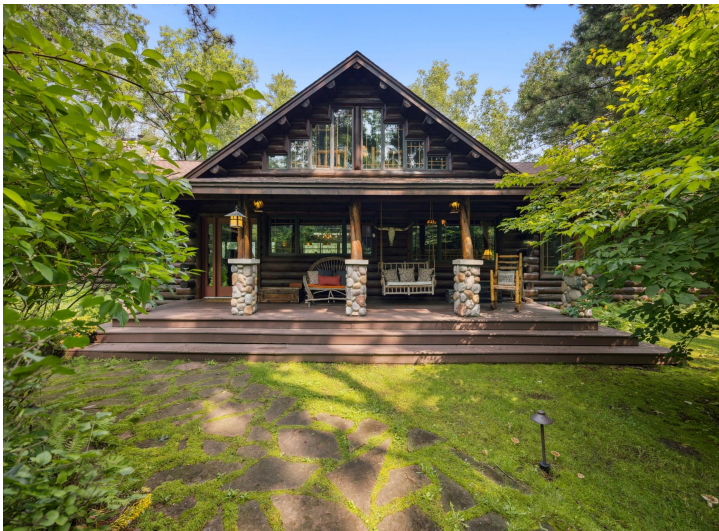
Call Affinity Real Estate

218-237-3333

info@affinityrealestate.com



Affinity Real Estate - 600 Park Avenue South - Park Rapids MN 56470



website: www.AffinityRealEstate.com | email: info@affinityrealestate.com | office: 218-237-3333 | fax:218-237-3377



\$2,650,000
MLS 6813046 Lake Home
15464 Birch Narrows Road
Crosslake MN 56442



website: www.AffinityRealEstate.com | email: info@affinityrealestate.com | office: 218-237-3333 | fax: 218-237-3377

Affinity
REAL ESTATE INC

\$2,650,000
MLS 6813046 Lake Home
15464 Birch Narrows Road
Crosslake MN 56442



website: www.AffinityRealEstate.com | email: info@affinityrealestate.com | office: 218-237-3333 | fax: 218-237-3377

Affinity
REAL ESTATE INC

\$2,650,000
MLS 6813046 Lake Home
15464 Birch Narrows Road
Crosslake MN 56442



website: www.AffinityRealEstate.com | email: info@affinityrealestate.com | office: 218-237-3333 | fax: 218-237-3377

Affinity
REAL ESTATE INC

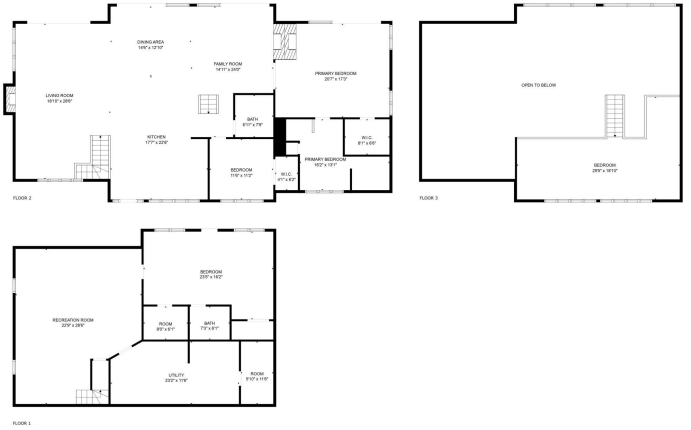
\$2,650,000
MLS 6813046 Lake Home
15464 Birch Narrows Road
Crosslake MN 56442



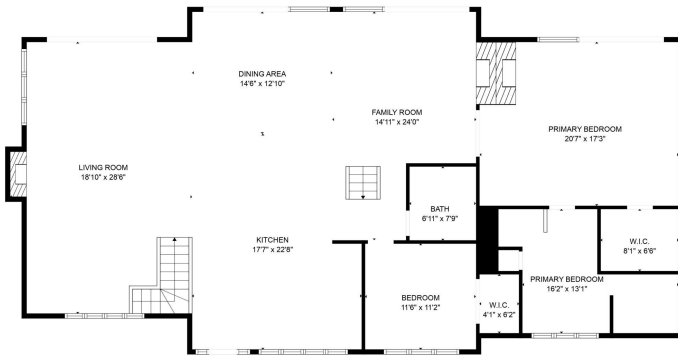
website: www.AffinityRealEstate.com | email: info@affinityrealestate.com | office: 218-237-3333 | fax:218-237-3377

Affinity
REAL ESTATE INC

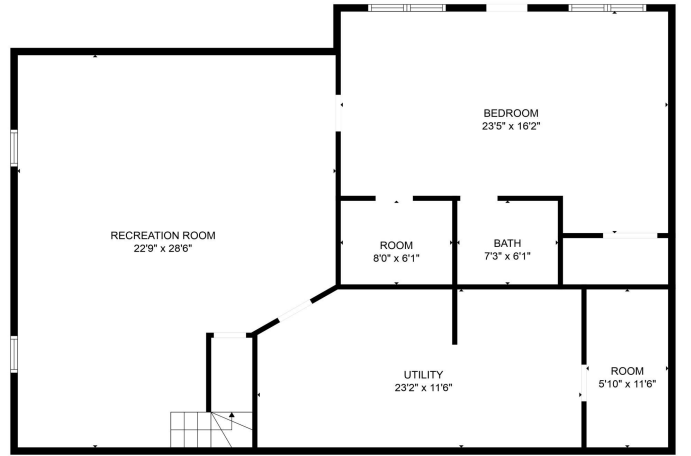
\$2,650,000
MLS 6813046 Lake Home
15464 Birch Narrows Road
Crosslake MN 56442



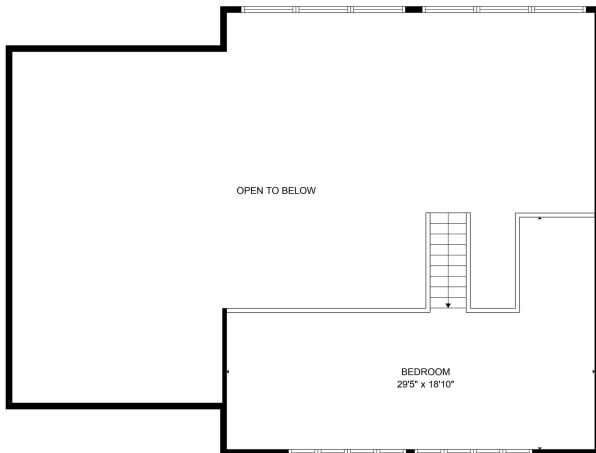
FLOOR PLAN CREATED BY CURBCASA APP. MEASUREMENTS DEEMED HIGHLY RELIABLE BUT NOT GUARANTEED.



FLOOR PLAN CREATED BY CURBCASA APP. MEASUREMENTS DEEMED HIGHLY RELIABLE BUT NOT GUARANTEED.



FLOOR PLAN CREATED BY CURBCASA APP. MEASUREMENTS DEEMED HIGHLY RELIABLE BUT NOT GUARANTEED.



FLOOR PLAN CREATED BY CURBCASA APP. MEASUREMENTS DEEMED HIGHLY RELIABLE BUT NOT GUARANTEED.

website: www.AffinityRealEstate.com | email: info@affinityrealestate.com | office: 218-237-3333 | fax: 218-237-3377



\$2,650,000
 MLS 6813046 Lake Home
 15464 Birch Narrows Road
 Crosslake MN 56442