



MLS 6813138 Lake Land

\$17,500

Description:

Beautiful Lot in an excellent location.
100 feet off the tar road and close to Fawn Lake and the Clubhouse.

Large Lot is 100 feet wide at the road and 250 feet long on the sides, and around 3/4 of an acre... Topography is pretty flat with big Mature towering trees toward the back half of the property and open site to build in front.

Gorgeous Setting. Nice place for 1st home, 2nd home or home away from home. Roads are plowed and maintained year round.

Electric is there as it runs past lot underground.

The lot sits inside a property owners association. Dues are only \$120 a year... Amenities include access to 4 lakes, clubhouse, campground and more. ATV friendly and on the state snowmobile trail. Year round living and enjoyment.

Agent related to owner.

Additional Details:

Lot Acres	0.53
Lot Dimensions	100 x 256 x 85 x 242
School District	2170
Taxes	\$28
Taxes with Assessments	\$28
Tax Year	2025

Additional Features:

Driving Directions:

From County Road 26 onto Paradise Drive to Left on Pike Court. Lot is on the Right Side and starts 100 feet from the corner.



Listed By:
Smart Choice Realty

Affinity Real Estate Inc. participates in the Regional Multiple Listing Service of Minnesota, Inc Broker Reciprocity (sm) program, allowing us to display other broker's listings on our website. All properties are subject to prior sale, change or withdrawal.



Call Affinity Real Estate

218-237-3333

info@affinityrealestate.com

MLS



Affinity Real Estate - 600 Park Avenue South - Park Rapids MN 56470



website: www.AffinityRealEstate.com | email: info@affinityrealestate.com | office: 218-237-3333 | fax: 218-237-3377



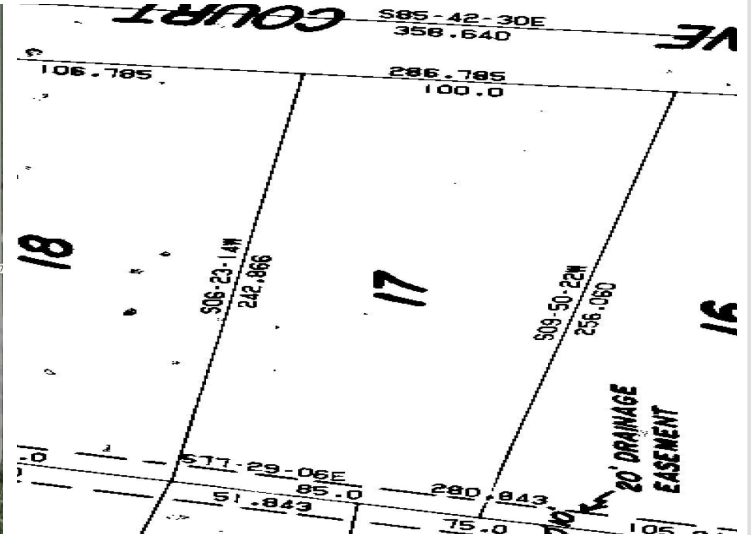
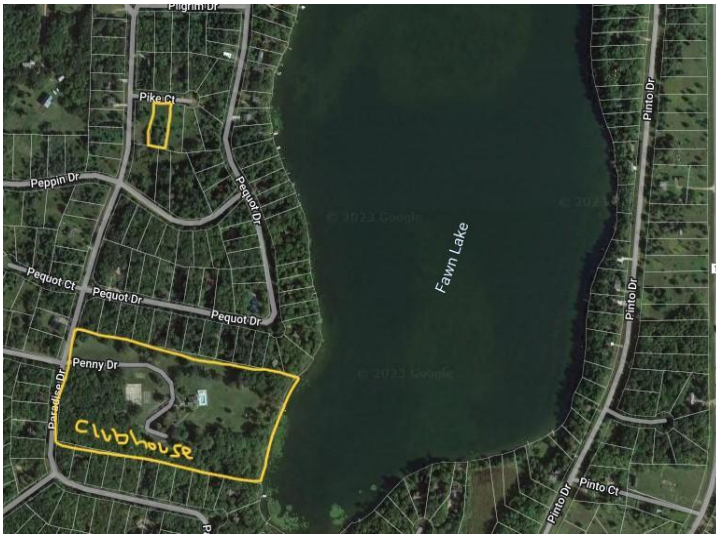
\$17,500
 MLS 6813138 Lake Land
 TBD Pike Court
 Browerville MN 56438



website: www.AffinityRealEstate.com | email: info@affinityrealestate.com | office: 218-237-3333 | fax: 218-237-3377



\$17,500
 MLS 6813138 Lake Land
 TBD Pike Court
 Browerville MN 56438



website: www.AffinityRealEstate.com | email: info@affinityrealestate.com | office: 218-237-3333 | fax: 218-237-3377



\$17,500
 MLS 6813138 Lake Land
 TBD Pike Court
 Browerville MN 56438