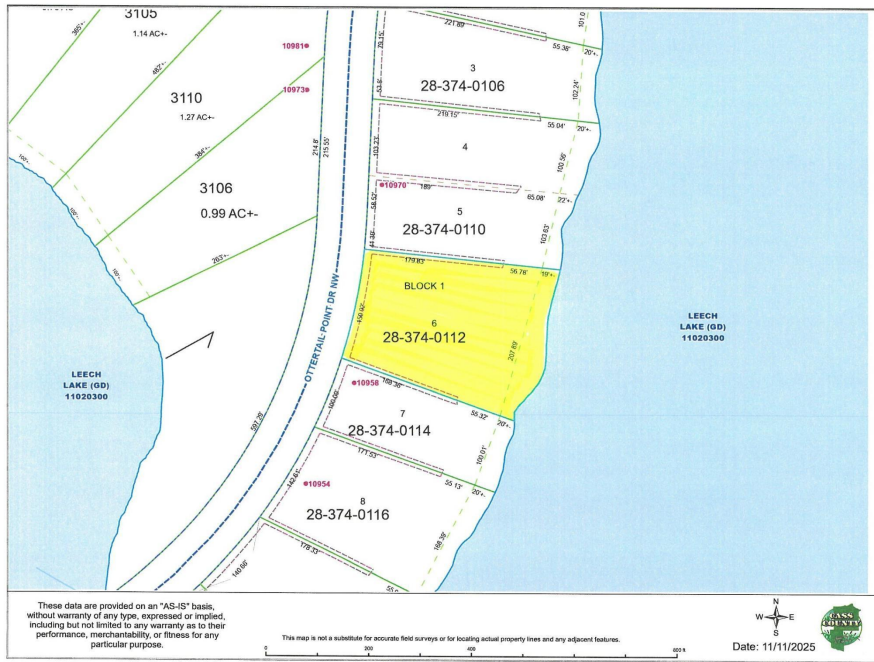




MLS 6813139 Lake Land

\$265,900



Description:

Welcome to Ottertail Point on Leech Lake. If you're looking for world-class fishing and a truly exceptional lot, this property is a rare find. Located on one of the premier fishing spots in Minnesota, this remarkable lot is approximately 1.1 acre and offers an impressive 207.89 feet of level rock and sand frontage, a size and setting that are hard to come by on Leech Lake. Beautifully treed and featuring level elevation all the way to the shoreline, this property provides the perfect canvas for your dream lake home or cabin. Ottertail Point is renowned for its outstanding fishing, and with its east-facing orientation, you'll enjoy stunning sunrise views over the water each morning. The driveway is already in, so you can start planning your getaway right away. Be sure to check out the aerial video to truly appreciate the scale and natural beauty of this remarkable, oversized lakeshore property on Leech Lake.

Additional Details:

Lot Acres	1.1
Lot Dimensions	208x244x151x256
School District	115
Taxes	\$2,784
Taxes with Assessments	\$2,784
Tax Year	2025

Additional Features:

Driving Directions:

From Cass Lake, go east on MN-2 for 11 miles and turn right onto Sucker Bay Rd., go 8.6 miles and turn right onto W Shores Rd. for 1.9 miles and turn left on 26th Ave. and then right onto Ottertail Rd., in 2.2 miles the property will be on the left.



Listed By:
Bill Hansen Realty/Walker

Affinity Real Estate Inc. participates in the Regional Multiple Listing Service of Minnesota, Inc Broker Reciprocity (sm) program, allowing us to display other broker's listings on our website. All properties are subject to prior sale, change or withdrawal.



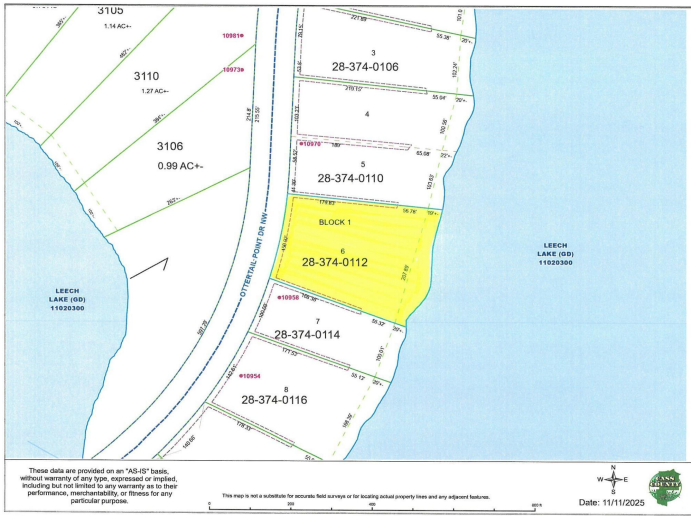
Call Affinity Real Estate

218-237-3333

info@affinityrealestate.com



Affinity Real Estate - 600 Park Avenue South - Park Rapids MN 56470



website: www.AffinityRealEstate.com | email: info@affinityrealestate.com | office: 218-237-3333 | fax: 218-237-3377



\$265,900
 MLS 6813139 Lake Land
 TBD - Lot 6 Ottertail Point
 Drive
 Cass Lake MN 56633



website: www.AffinityRealEstate.com | email: info@affinityrealestate.com | office: 218-237-3333 | fax: 218-237-3377



\$265,900

MLS 6813139 Lake Land
TBD - Lot 6 Ottertail Point
Drive
Cass Lake MN 56633



website: www.AffinityRealEstate.com | email: info@affinityrealestate.com | office: 218-237-3333 | fax: 218-237-3377



\$265,900

MLS 6813139 Lake Land
TBD - Lot 6 Ottertail Point
Drive
Cass Lake MN 56633



website: www.AffinityRealEstate.com | email: info@affinityrealestate.com | office: 218-237-3333 | fax:218-237-3377



\$265,900

MLS 6813139 Lake Land
TBD - Lot 6 Ottertail Point
Drive
Cass Lake MN 56633