



MLS 6813742 Land

\$68,000

6.78 Acres

Other

5 County Hwy 49

Akeley MN 56433

Status: Active

Description:

Discover the perfect balance of space, scenery, and opportunity with these two parcels totaling over 6.7 acres in the serene Red Pine Ranch community. Tucked among rolling hills and mature pines, these properties offer an escape with easy access to modern conveniences — ideal for your private mountain retreat, compound, or future build.

APN 28.48.00900 – 4.47 acres (Lots 5 & 5A, Block 2)

APN 28.48.00800 – 2.31 acres (Lot 4, Block 2)

Each parcel features gently sloping terrain with beautiful views and abundant natural vegetation. The spacious layout allows for privacy while still maintaining a sense of community. Whether you're looking to build now or invest for the future, Red Pine Ranch provides the perfect backdrop for both recreation and relaxation.

Enjoy nearby access to outdoor adventures — hiking, fishing, and year-round mountain beauty — all while being within reach of town amenities.

? Two parcels available — purchase individually or together for an expansive 6.78-acre homestead opportunity. Owner Financing.

Additional Details:

Lot Acres	6.78
Lot Dimensions	680x332.68x78x430.62
School District	693
Taxes	\$210
Taxes with Assessments	(unreported)
Tax Year	2024

Additional Features:



Listed By:
List With Freedom
wy 49/County 49/4th St SE

? Continue to follow Company's Regional Multiple Listing
? Section of Minnesota, and Broker Reciprocity (sm) program, allowing
us to display other broker's listings on our website. All properties are
subject to prior sale, change or withdrawal.



Call Affinity Real Estate

218-237-3333

info@affinityrealestate.com



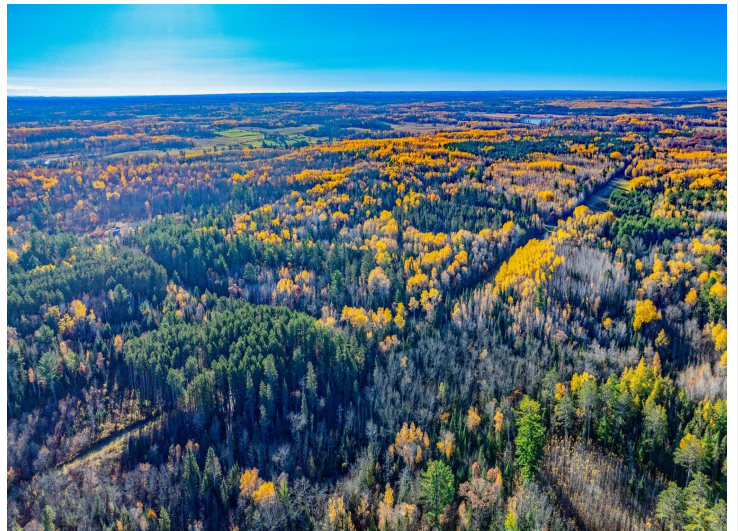
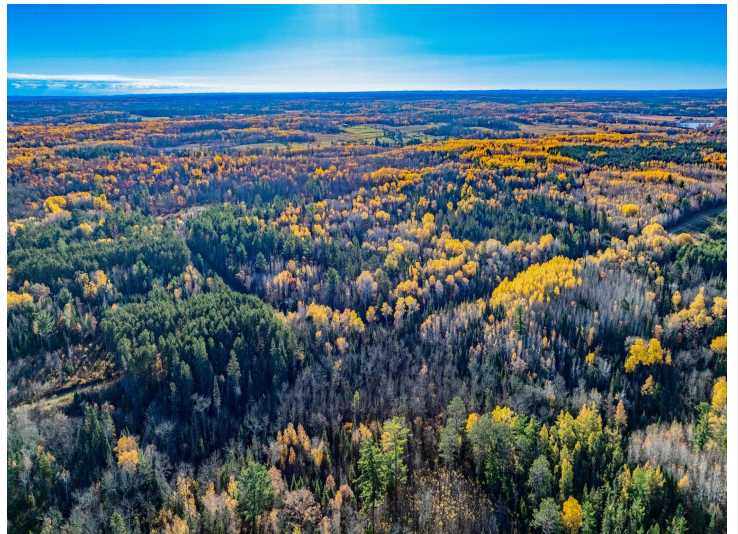
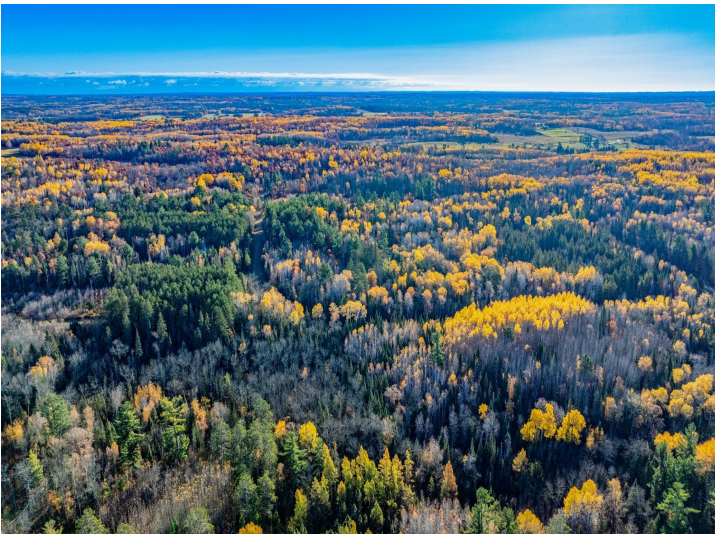
Affinity Real Estate - 600 Park Avenue South - Park Rapids MN 56470



website: www.AffinityRealEstate.com | email: info@affinityrealestate.com | office: 218-237-3333 | fax: 218-237-3377



\$68,000
MLS 6813742 Land
5 County Hway 49
Akeley MN 56433



website: www.AffinityRealEstate.com | email: info@affinityrealestate.com | office: 218-237-3333 | fax: 218-237-3377



\$68,000
 MLS 6813742 Land
 5 County Hwy 49
 Akeley MN 56433



website: www.AffinityRealEstate.com | email: info@affinityrealestate.com | office: 218-237-3333 | fax: 218-237-3377



\$68,000
MLS 6813742 Land
5 County Hwy 49
Akeley MN 56433



website: www.AffinityRealEstate.com | email: info@affinityrealestate.com | office: 218-237-3333 | fax: 218-237-3377



\$68,000
 MLS 6813742 Land
 5 County Hway 49
 Akeley MN 56433



website: www.AffinityRealEstate.com | email: info@affinityrealestate.com | office: 218-237-3333 | fax:218-237-3377



\$68,000
MLS 6813742 Land
5 County Hway 49
Akeley MN 56433