



MLS 6813876 Residential

\$419,900

3,276 sq ft
4 bedrooms
2 baths

19843 145th Avenue
Wadena MN 56482

Status: Active

Description:

Welcome to your dream retreat! This beautifully updated 4-bedroom, 2-bathroom home offers a spacious walk-out design, perfect for family living and entertaining. The heart of the home is the open, big kitchen featuring an ample pantry, making meal prep and gatherings a delight. Constructed with an addition in 2012, this property boasts modern finishes and thoughtful details throughout. The master suite is a true haven, featuring a huge walk-in closet for all your storage needs. Enjoy the comfort of an attached insulated and finished garage, perfect for year-round parking and projects. The exterior of the home is equally impressive, featuring smart siding that combines durability with aesthetics. An extra 24x40 shop and a 36x40 storage shed provide ample space for your hobbies and equipment. Set on a picturesque wooded lot, you'll find peace and tranquility while enjoying the sights of deer and local wildlife. The tar driveway leads you home, and for leisure, you'll be just 8 miles from Wadena and a mere 2 miles from the golf course. Don't miss out on this perfect blend of comfort, convenience, and nature! This property is going to be split off from 39 acres. Building site and 6+ or - acres. Survey needs to be completed. Proposed stakes in corners. Current real estate taxes are according to 39 acre parcel.

Additional Details:

Year Built	1973
Lot Acres	6
Lot Dimensions	irregular
Garage Stalls	1
School District	2155
Taxes	\$3,192
Taxes with Assessments	\$3,192
Tax Year	2025

Additional Features:

Basement: Finished, Full, Walkout **Fuel:** Electric, Oil **Garage:** 1 **Heat:** Dual, Forced Air **Sewer:** Mound Septic **Water:** Drilled, Private, Well **Air Conditioning:** Central Air

Driving Directions:

71 north of Wadena to Hwy #6. Go East to 145th AV. Turn north to property on west side of road



Listed By:
Boll Realty

Affinity Real Estate Inc. participates in the Regional Multiple Listing Service of Minnesota, Inc Broker Reciprocity (sm) program, allowing us to display other broker's listings on our website. All properties are subject to prior sale, change or withdrawal.



Call Affinity Real Estate

218-237-3333

info@affinityrealestate.com



Affinity Real Estate - 600 Park Avenue South - Park Rapids MN 56470



website: www.AffinityRealEstate.com | email: info@affinityrealestate.com | office: 218-237-3333 | fax: 218-237-3377



\$419,900
 MLS 6813876 Residential
 19843 145th Avenue
 Wadena MN 56482



website: www.AffinityRealEstate.com | email: info@affinityrealestate.com | office: 218-237-3333 | fax: 218-237-3377

Affinity
REAL ESTATE INC

\$419,900
MLS 6813876 Residential
19843 145th Avenue
Wadena MN 56482



website: www.AffinityRealEstate.com | email: info@affinityrealestate.com | office: 218-237-3333 | fax: 218-237-3377

Affinity
REAL ESTATE INC

\$419,900
MLS 6813876 Residential
19843 145th Avenue
Wadena MN 56482



website: www.AffinityRealEstate.com | email: info@affinityrealestate.com | office: 218-237-3333 | fax: 218-237-3377



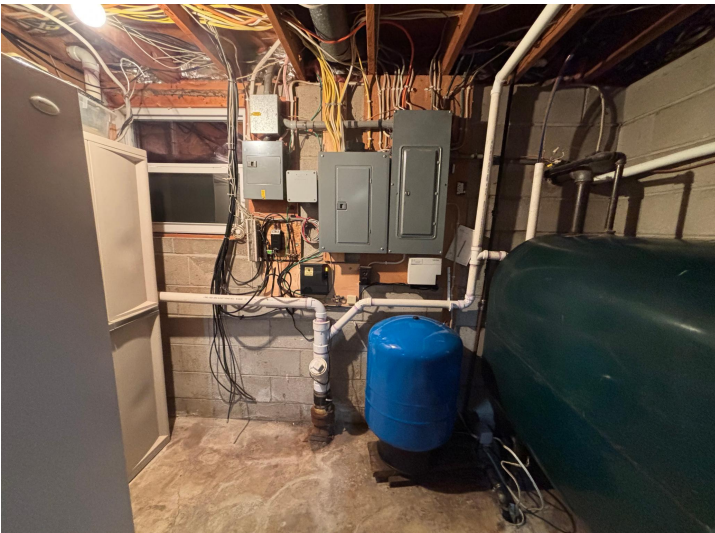
\$419,900
MLS 6813876 Residential
19843 145th Avenue
Wadena MN 56482



website: www.AffinityRealEstate.com | email: info@affinityrealestate.com | office: 218-237-3333 | fax: 218-237-3377

Affinity
REAL ESTATE INC

\$419,900
MLS 6813876 Residential
19843 145th Avenue
Wadena MN 56482



website: www.AffinityRealEstate.com | email: info@affinityrealestate.com | office: 218-237-3333 | fax: 218-237-3377

Affinity
REAL ESTATE INC

\$419,900
MLS 6813876 Residential
19843 145th Avenue
Wadena MN 56482



website: www.AffinityRealEstate.com | email: info@affinityrealestate.com | office: 218-237-3333 | fax: 218-237-3377

Affinity
REAL ESTATE INC

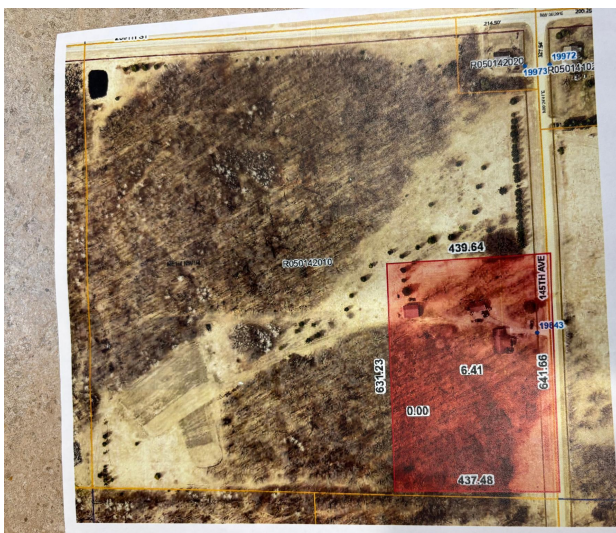
\$419,900
MLS 6813876 Residential
19843 145th Avenue
Wadena MN 56482



website: www.AffinityRealEstate.com | email: info@affinityrealestate.com | office: 218-237-3333 | fax: 218-237-3377

Affinity
REAL ESTATE INC

\$419,900
MLS 6813876 Residential
19843 145th Avenue
Wadena MN 56482



website: www.AffinityRealEstate.com | email: info@affinityrealestate.com | office: 218-237-3333 | fax: 218-237-3377



\$419,900
MLS 6813876 Residential
19843 145th Avenue
Wadena MN 56482



website: www.AffinityRealEstate.com | email: info@affinityrealestate.com | office: 218-237-3333 | fax: 218-237-3377

Affinity
REAL ESTATE INC

\$419,900
MLS 6813876 Residential
19843 145th Avenue
Wadena MN 56482



website: www.AffinityRealEstate.com | email: info@affinityrealestate.com | office: 218-237-3333 | fax: 218-237-3377



\$419,900
 MLS 6813876 Residential
 19843 145th Avenue
 Wadena MN 56482



website: www.AffinityRealEstate.com | email: info@affinityrealestate.com | office: 218-237-3333 | fax: 218-237-3377



\$419,900
MLS 6813876 Residential
19843 145th Avenue
Wadena MN 56482