



MLS 6814029 Residential

\$369,900

2,648 sq ft
4 bedrooms
2 baths

119 Tyler Avenue
Bemidji MN 56601

Status: Active

Description:

This beautifully updated home welcomes you with warmth and comfort from the moment you walk through the front door. Nestled on a peaceful corner lot surrounded by mature trees, it offers 4+ bedrooms and 2 bathrooms designed for both everyday living and functionality. The spacious kitchen has new stainless steel appliances and plenty of cabinet and pantry space, while the remodeled lower-level bathroom, new central air, updated light fixtures, and fresh carpet in the lower level add a touch of modern ease. After a long day, unwind in the private sauna or enjoy quiet evenings on the maintenance-free deck overlooking the serene backyard. With both a double attached garage and a 24x48 four-stall detached garage, there's plenty of space for everything you need. Bright, open rooms and large bedrooms create a sense of comfort and belonging that make this home truly special.

Additional Details:

Year Built	1979
Lot Acres	2.03
Lot Dimensions	308x285
Garage Stalls	6
School District	1386
Taxes	\$3,278
Taxes with Assessments	\$3,464
Tax Year	2025

Additional Features:

Basement: Block **Fuel:** Array **Garage:** 6 **Heat:** Baseboard, Forced Air **Sewer:** Private Sewer **Water:** Private **Air Conditioning:** Central Air

Driving Directions:

East on Roosevelt Rd to Left on Tyler Ave to property on left, or East on Power dam Rd to Tyler Ave, Right on Tyler Ave follow to property on right.



Listed By:
218 Real Estate

Affinity Real Estate Inc. participates in the Regional Multiple Listing Service of Minnesota, Inc Broker Reciprocity (sm) program, allowing us to display other broker's listings on our website. All properties are subject to prior sale, change or withdrawal.



Call Affinity Real Estate

218-237-3333

info@affinityrealestate.com



Affinity Real Estate - 600 Park Avenue South - Park Rapids MN 56470



website: www.AffinityRealEstate.com | email: info@affinityrealestate.com | office: 218-237-3333 | fax: 218-237-3377

Affinity
REAL ESTATE INC

\$369,900
MLS 6814029 Residential
119 Tyler Avenue
Bemidji MN 56601



website: www.AffinityRealEstate.com | email: info@affinityrealestate.com | office: 218-237-3333 | fax: 218-237-3377

Affinity
REAL ESTATE INC

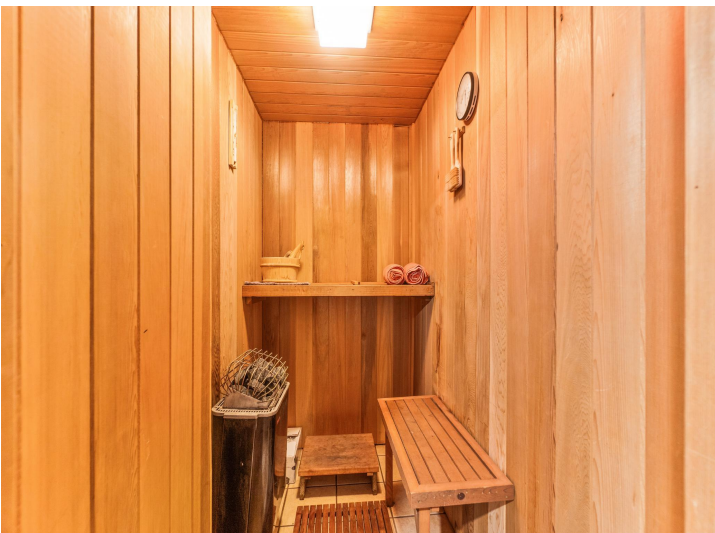
\$369,900
MLS 6814029 Residential
119 Tyler Avenue
Bemidji MN 56601



website: www.AffinityRealEstate.com | email: info@affinityrealestate.com | office: 218-237-3333 | fax: 218-237-3377



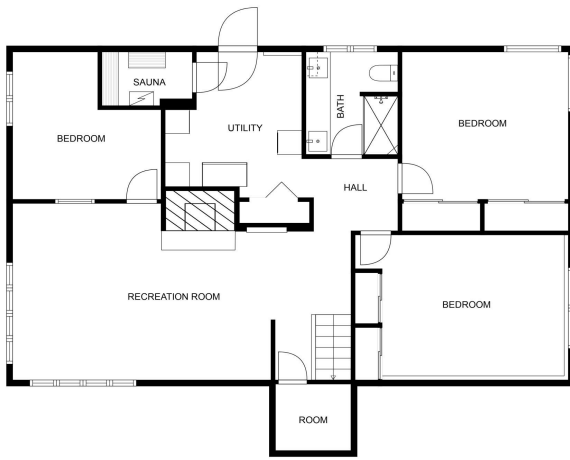
\$369,900
MLS 6814029 Residential
119 Tyler Avenue
Bemidji MN 56601



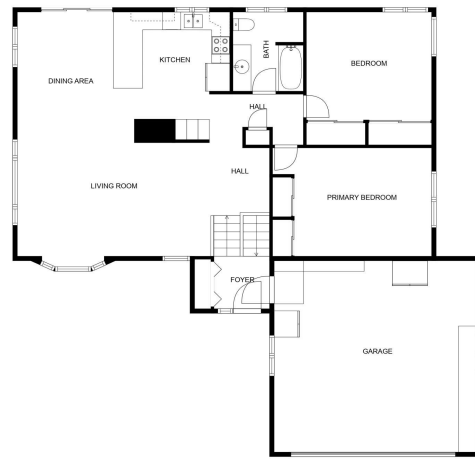
website: www.AffinityRealEstate.com | email: info@affinityrealestate.com | office: 218-237-3333 | fax: 218-237-3377

Affinity
REAL ESTATE INC

\$369,900
MLS 6814029 Residential
119 Tyler Avenue
Bemidji MN 56601



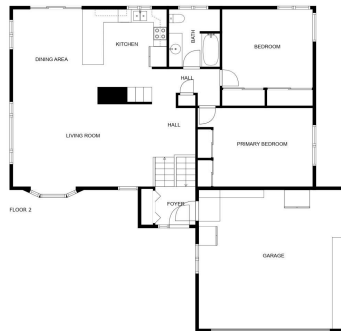
FLOOR PLAN CREATED BY CUBICASA APP. MEASUREMENTS DEEMED HIGHLY RELIABLE BUT NOT GUARANTEED.



FLOOR PLAN CREATED BY CUBICASA APP. MEASUREMENTS DEEMED HIGHLY RELIABLE BUT NOT GUARANTEED.



FLOOR 1



FLOOR 2

FLOOR PLAN CREATED BY CUBICASA APP. MEASUREMENTS DEEMED HIGHLY RELIABLE BUT NOT GUARANTEED.

website: www.AffinityRealEstate.com | email: info@affinityrealestate.com | office: 218-237-3333 | fax: 218-237-3377



\$369,900
MLS 6814029 Residential
119 Tyler Avenue
Bemidji MN 56601