



MLS 6814620 Land

**\$499,000**

5 Acres  
Other

31282 US 71  
Park Rapids MN 56470

Status: Active

#### Description:

Welcome to a rare opportunity in Park Rapids - a massive 60'x120' pole barn on 5 private acres, built with top-tier upgrades and designed to handle serious work. Featuring 16' sidewalls, a 6" concrete floor, and in-floor plumbing stubbed for a bathroom, this structure is ready for your business, hobby shop, or storage needs. The shop includes two long trench drains, two holding tanks, and is illuminated by Hyperlight LED lighting. Three oversized stainless steel ceiling fans provide excellent air movement, and the impressive Energy Logic 320 waste oil furnace - their largest model - delivers efficient, cost-effective heat all winter long. Whether you're looking for a turnkey shop, space for equipment, or a versatile property to build on, this 5-acre setup checks every box. Bring your ideas and make this property work for you!

#### Additional Details:

Lot Acres	5
Lot Dimensions	coming
School District	309
Taxes	\$246
Taxes with Assessments	\$246
Tax Year	2025

#### Additional Features:

#### Driving Directions:

US 71 North to property on right.



Listed By:  
RE/MAX Results

Affinity Real Estate Inc. participates in the Regional Multiple Listing Service of Minnesota, Inc Broker Reciprocity (sm) program, allowing us to display other broker's listings on our website. All properties are subject to prior sale, change or withdrawal.



Call Affinity Real Estate

**218-237-3333**

[info@affinityrealestate.com](mailto:info@affinityrealestate.com)



Affinity Real Estate - 600 Park Avenue South - Park Rapids MN 56470





website: [www.AffinityRealEstate.com](http://www.AffinityRealEstate.com) | email: [info@affinityrealestate.com](mailto:info@affinityrealestate.com) | office: 218-237-3333 | fax: 218-237-3377



**\$499,000**  
 MLS 6814620 Land  
 31282 US 71  
 Park Rapids MN 56470



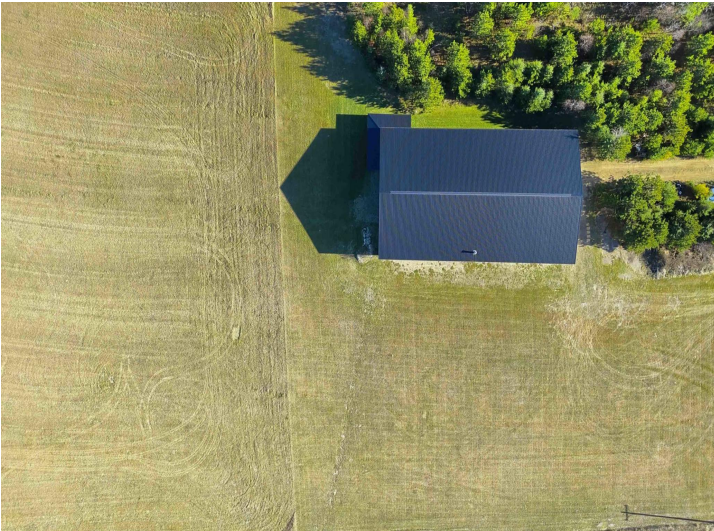


website: [www.AffinityRealEstate.com](http://www.AffinityRealEstate.com) | email: [info@affinityrealestate.com](mailto:info@affinityrealestate.com) | office: 218-237-3333 | fax: 218-237-3377



**\$499,000**  
 MLS 6814620 Land  
 31282 US 71  
 Park Rapids MN 56470





website: [www.AffinityRealEstate.com](http://www.AffinityRealEstate.com) | email: [info@affinityrealestate.com](mailto:info@affinityrealestate.com) | office: 218-237-3333 | fax: 218-237-3377



**\$499,000**  
 MLS 6814620 Land  
 31282 US 71  
 Park Rapids MN 56470