

MLS 6814682 Land

\$152,900

3.09 Acres

Raw Land

0 Lot 6 Todd Circle
Garrison MN 56450

Status: Active

Description:

This beautiful 3.09-acre wooded lot in the La Buena Vista Subdivision offers the perfect setting for your future home or getaway near Garrison, MN. Just minutes from Mille Lacs Lake, you can enjoy world-class fishing, boating, and year-round outdoor recreation right at your doorstep. The area features charming local shops, golf courses, and great dining options, with Brainerd only about 30 minutes away and the Twin Cities within a two-hour drive. Peaceful, private, and surrounded by nature, this property captures the best of lake country living. Priced well below market value—this is truly the best land deal in Garrison!

Additional Details:

Lot Acres	3.09
Lot Dimensions	270x568x202x582
School District	181
Taxes	\$736
Taxes with Assessments	\$736
Tax Year	2025

Additional Features:

Driving Directions:

From Co Hwy 26 turn right onto Red Oak Dr. Turn left onto Todd Circle. Destination will be on the right.



Listed By:
Jeff Hagel

Affinity Real Estate Inc. participates in the Regional Multiple Listing Service of Minnesota, Inc Broker Reciprocity (sm) program, allowing us to display other broker's listings on our website. All properties are subject to prior sale, change or withdrawal.



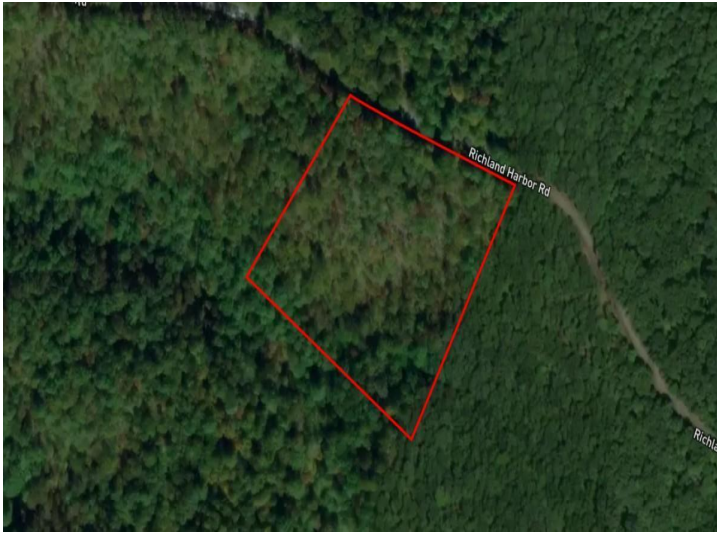
Call Affinity Real Estate

218-237-3333

info@affinityrealestate.com



Affinity Real Estate - 600 Park Avenue South - Park Rapids MN 56470



website: www.AffinityRealEstate.com | email: info@affinityrealestate.com | office: 218-237-3333 | fax: 218-237-3377



\$152,900

MLS 6814682 Land
0 Lot 6 Todd Circle
Garrison MN 56450