



MLS 6814969 Residential

\$239,500

1,684 sq ft
2 bedrooms
2 baths

2242 Spruce Drive
Brainerd MN 56401

Status: Pending

Description:

Absolutely stunning renovation! This beautifully updated town home is perfect for those who want nothing but the best. Just look at what's NEW: luxury vinyl plank flooring, soft carpet, furnace, AC, water heater, bath fixtures, appliances, granite countertops, woodwork, paint, and even the deck and patio! The popcorn ceilings? Gone and replaced with a fresh modern finish.

Enjoy 2 bedrooms, 2 full baths, 2 living areas, a 2-car attached garage plus 2 additional parking spaces. Every project has already been done—simply move in and relax while the association takes care of lawn care and snow removal.

Easy living, beautifully done—make this home yours today!

Side note: no AI has been used on the photos.

Additional Details:

Year Built	1979
Lot Acres	0.14
Lot Dimensions	120x60x96x55
Garage Stalls	2
School District	896
Taxes	\$2,040
Taxes with Assessments	\$2,040
Tax Year	2025

Additional Features:

Fuel: Array **Heat:** Forced Air

Driving Directions:

from the water tower in Brainerd, go south 1.9 miles on 371 Business S/S 6th St to R on Buffalo Hills Lane E to 2nd R on Spruce Dr to first left into townhomes to first left to prop on left (see sign)



Listed By:
Century 21 Brainerd Realty

Affinity Real Estate Inc. participates in the Regional Multiple Listing Service of Minnesota, Inc Broker Reciprocity (sm) program, allowing us to display other broker's listings on our website. All properties are subject to prior sale, change or withdrawal.



Call Affinity Real Estate

218-237-3333

info@affinityrealestate.com



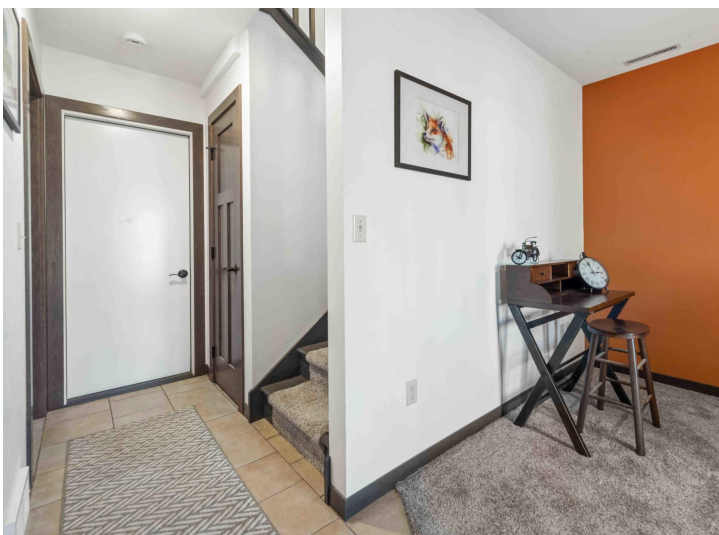
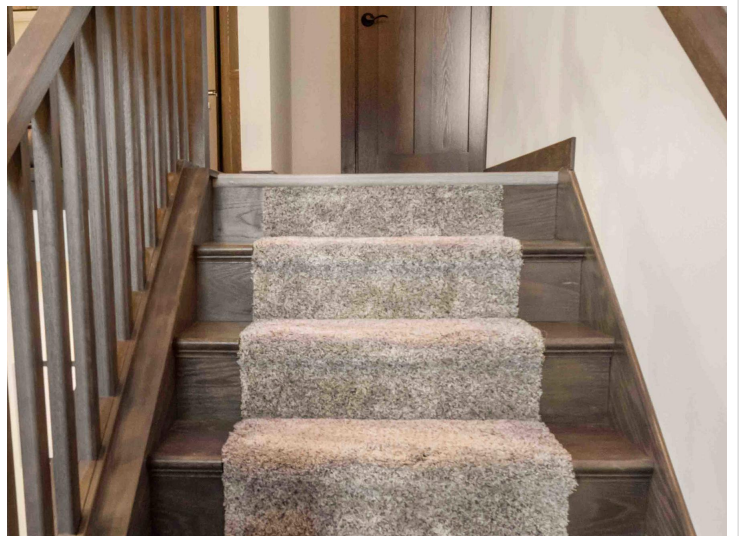
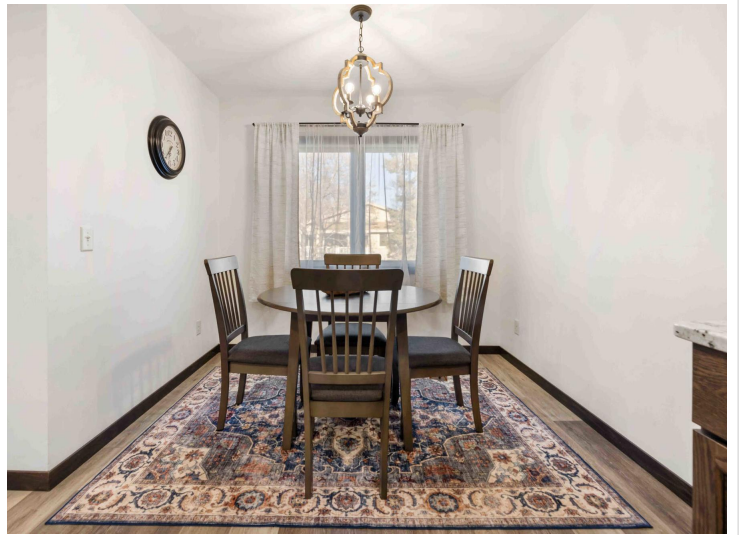
Affinity Real Estate - 600 Park Avenue South - Park Rapids MN 56470



website: www.AffinityRealEstate.com | email: info@affinityrealestate.com | office: 218-237-3333 | fax:218-237-3377



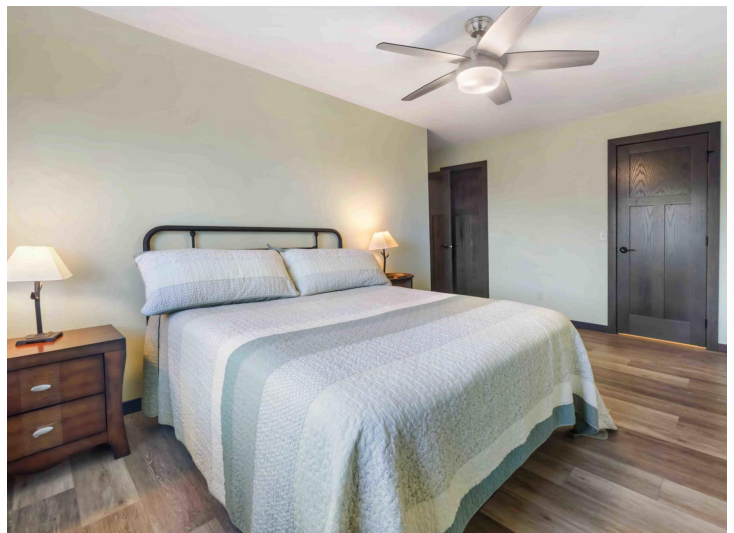
\$239,500
MLS 6814969 Residential
2242 Spruce Drive
Brainerd MN 56401



website: www.AffinityRealEstate.com | email: info@affinityrealestate.com | office: 218-237-3333 | fax:218-237-3377



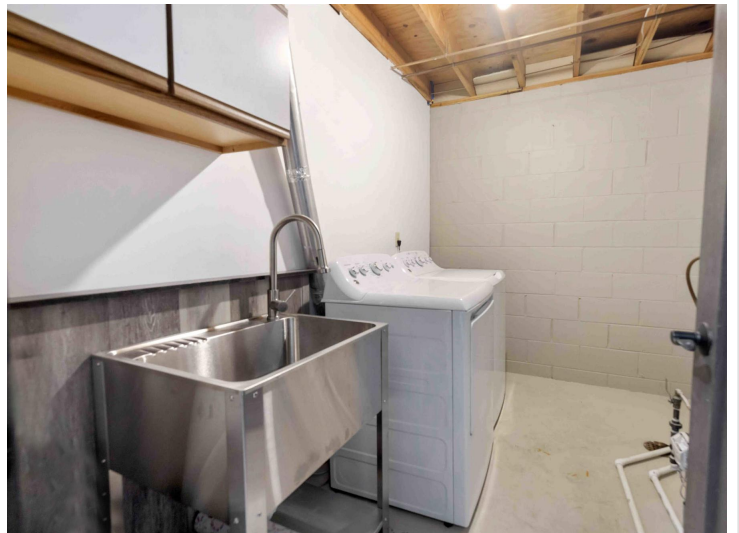
\$239,500
MLS 6814969 Residential
2242 Spruce Drive
Brainerd MN 56401



website: www.AffinityRealEstate.com | email: info@affinityrealestate.com | office: 218-237-3333 | fax:218-237-3377

Affinity
REAL ESTATE INC

\$239,500
MLS 6814969 Residential
2242 Spruce Drive
Brainerd MN 56401



website: www.AffinityRealEstate.com | email: info@affinityrealestate.com | office: 218-237-3333 | fax: 218-237-3377

Affinity
REAL ESTATE INC

\$239,500
MLS 6814969 Residential
2242 Spruce Drive
Brainerd MN 56401

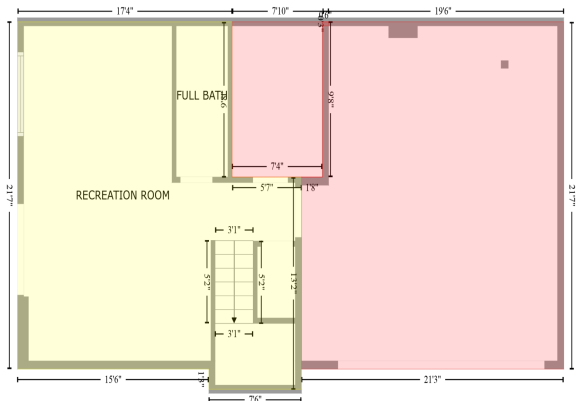
FLOOR 2
[AREA: 1021]



FLOOR 1
[AREA: 451]

UTILITY (2)
[AREA: 71]

GARAGE (1)
[AREA: 441]



FLOOR PLAN CREATED BY CUBSCASA APP. MEASUREMENTS DEEMED HIGHLY RELIABLE BUT NOT GUARANTEED.



website: www.AffinityRealEstate.com | email: info@affinityrealestate.com | office: 218-237-3333 | fax: 218-237-3377



\$239,500
MLS 6814969 Residential
2242 Spruce Drive
Brainerd MN 56401



website: www.AffinityRealEstate.com | email: info@affinityrealestate.com | office: 218-237-3333 | fax:218-237-3377



\$239,500
MLS 6814969 Residential
2242 Spruce Drive
Brainerd MN 56401