

MLS 6815456 Land

\$30,000

2.93 Acres
Finished Lot(s)

TBD Ponderosa Drive
Staples MN 56479

Status: Active

Description:

Looking to build your dream home with that perfect shop/pole building? This 2.93 deeded acres offers high and level ground that is already cleared and ready for your new construction. Close to 18-hole golf course with seasonal dining, Crow Wing River, Legacy Gardens, walking/bike trails and just 5 minutes from town. Fiber optics Internet service available. Don't miss this opportunity.

Additional Details:

Lot Acres	2.93
Lot Dimensions	376x220x320x410
School District	2170
Taxes	\$168
Taxes with Assessments	\$168
Tax Year	2025

Additional Features:

Driving Directions:

From US Hwy 10 in Staples, turn N on Cardinal Dr, to L (north) on to Airport Rd, drive to 4-way stop at Central Lakes College, continue to R turn onto 124th St, stay right as 124th turns into Ponderosa Dr. Property on right, see sign.



Listed By:
Edina Realty, Inc.

Affinity Real Estate Inc. participates in the Regional Multiple Listing Service of Minnesota, Inc Broker Reciprocity (sm) program, allowing us to display other broker's listings on our website. All properties are subject to prior sale, change or withdrawal.



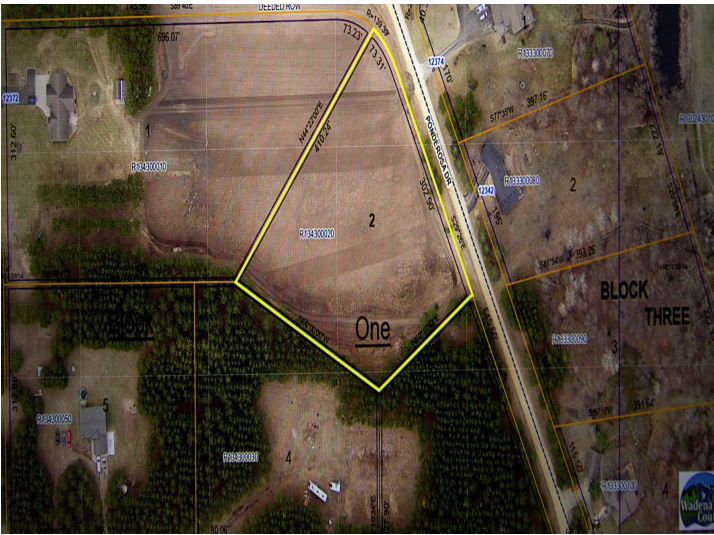
Call Affinity Real Estate

218-237-3333

info@affinityrealestate.com



Affinity Real Estate - 600 Park Avenue South - Park Rapids MN 56470



website: www.AffinityRealEstate.com | email: info@affinityrealestate.com | office: 218-237-3333 | fax: 218-237-3377



\$30,000
 MLS 6815456 Land
 TBD Ponderosa Drive
 Staples MN 56479