



MLS 6815596 Residential

\$215,000

1,008 sq ft
2 bedrooms
1 baths

2230 Spruce Drive
Brainerd MN 56401

Status: Active

Description:

One Level Living at its best!!! This 2 bedroom home has a attached garage with some additional storage area in the garage for your yard tools. Invite your friends over to visit while you cook dinner in your open kitchen with spacious countertops. Have your dinner in the dining room or just eat and visit at the breakfast nook. The large living room gives great natural views out the sliding glass window that leads to the enjoyable outside deck. Home boasts main floor laundry, spacious bedrooms and a walk-in tub for comfort. This property has great access to many walking trails or a nearby park for outdoor activities or picnics. Come take a look at this great one level home that is priced to be gentle on your budget.

Additional Details:

Year Built	1989
Lot Acres	0.11
Lot Dimensions	40x110
Garage Stalls	1
School District	896
Taxes	\$1,666
Taxes with Assessments	\$1,666
Tax Year	2024

Additional Features:

Basement: Crawl Space **Fuel:** Array **Garage:** 1 **Heat:** Forced Air **Sewer:** City Sewer/Connected **Water:** City Water/Connected **Air Conditioning:** Central Air

Driving Directions:

Follow South 6th Street to right on Buffalo Hills Lane to right on Spruce Drive then take first left to a left at the Tee to property on the right.



Listed By:
eXp Realty

Affinity Real Estate Inc. participates in the Regional Multiple Listing Service of Minnesota, Inc Broker Reciprocity (sm) program, allowing us to display other broker's listings on our website. All properties are subject to prior sale, change or withdrawal.



Call Affinity Real Estate

218-237-3333

info@affinityrealestate.com



Affinity Real Estate - 600 Park Avenue South - Park Rapids MN 56470



website: www.AffinityRealEstate.com | email: info@affinityrealestate.com | office: 218-237-3333 | fax: 218-237-3377

Affinity
REAL ESTATE INC

\$215,000
MLS 6815596 Residential
2230 Spruce Drive
Brainerd MN 56401



website: www.AffinityRealEstate.com | email: info@affinityrealestate.com | office: 218-237-3333 | fax:218-237-3377



\$215,000
MLS 6815596 Residential
2230 Spruce Drive
Brainerd MN 56401



website: www.AffinityRealEstate.com | email: info@affinityrealestate.com | office: 218-237-3333 | fax:218-237-3377

Affinity
REAL ESTATE INC

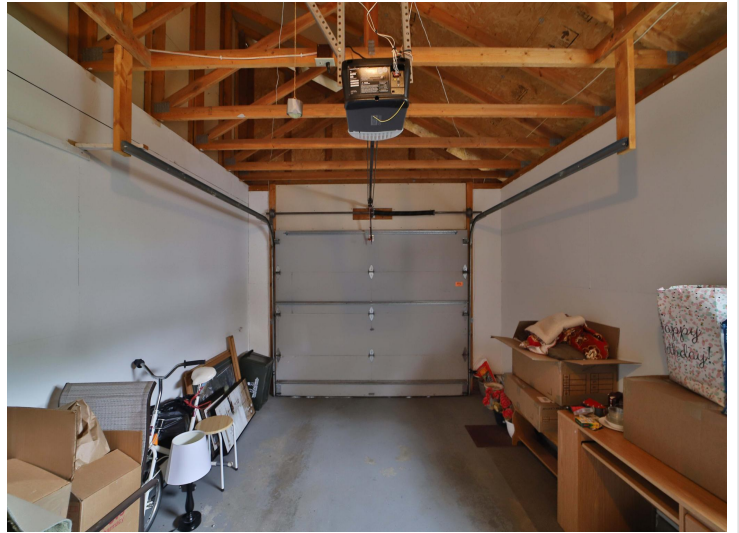
\$215,000
MLS 6815596 Residential
2230 Spruce Drive
Brainerd MN 56401



website: www.AffinityRealEstate.com | email: info@affinityrealestate.com | office: 218-237-3333 | fax:218-237-3377

Affinity
REAL ESTATE INC

\$215,000
MLS 6815596 Residential
2230 Spruce Drive
Brainerd MN 56401



website: www.AffinityRealEstate.com | email: info@affinityrealestate.com | office: 218-237-3333 | fax:218-237-3377

Affinity
REAL ESTATE INC

\$215,000
MLS 6815596 Residential
2230 Spruce Drive
Brainerd MN 56401



website: www.AffinityRealEstate.com | email: info@affinityrealestate.com | office: 218-237-3333 | fax:218-237-3377



\$215,000
MLS 6815596 Residential
2230 Spruce Drive
Brainerd MN 56401