



MLS 6815969 Commercial

\$749,900

514 Summit Avenue
Detroit Lakes MN 56501

Status: Active

Description:

On the edge of Hwy 10 in Detroit Lakes, you will find this commercial building ready for a new owner. Main floor has 3 units with studio options, and lower level is a full open area for retail or anything you can dream up. High traffic count with great exposure, it is perfect for retail, office space or many other options. The building is mostly full with great rental income. On street parking or parking in the rear of the building. Entire building is in excellent condition. Owner operates a salon and has agreed to stay on as a tenant if new owner wishes. Call for your appointment today!

Additional Details:

Year Built	1990
Lot Acres	0.21
Lot Dimensions	.21 Acres
School District	22
Taxes	\$7,238
Taxes with Assessments	\$7,238
Tax Year	2025

Additional Features:

Basement: Concrete **Fuel:** Natural Gas **Heat:** Forced Air **Sewer:** City Sewer/Connected **Water:** City Water/Connected **Air Conditioning:** Central Air

Driving Directions:

In Detroit Lakes, travel to 514 Summit Avenue.



Listed By:
Coldwell Banker At The Lakes

Affinity Real Estate Inc. participates in the Regional Multiple Listing Service of Minnesota, Inc Broker Reciprocity (sm) program, allowing us to display other broker's listings on our website. All properties are subject to prior sale, change or withdrawal.



Call Affinity Real Estate
218-237-3333
info@affinityrealestate.com



Affinity Real Estate - 600 Park Avenue South - Park Rapids MN 56470



website: www.AffinityRealEstate.com | email: info@affinityrealestate.com | office: 218-237-3333 | fax: 218-237-3377



\$749,900
 MLS 6815969 Commercial
 514 Summit Avenue
 Detroit Lakes MN 56501



website: www.AffinityRealEstate.com | email: info@affinityrealestate.com | office: 218-237-3333 | fax: 218-237-3377

Affinity
REAL ESTATE INC

\$749,900
MLS 6815969 Commercial
514 Summit Avenue
Detroit Lakes MN 56501



website: www.AffinityRealEstate.com | email: info@affinityrealestate.com | office: 218-237-3333 | fax: 218-237-3377

Affinity
REAL ESTATE INC

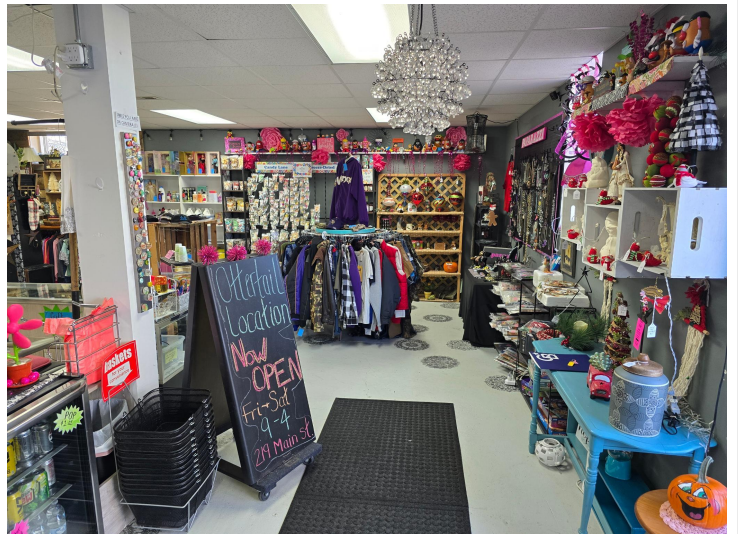
\$749,900
MLS 6815969 Commercial
514 Summit Avenue
Detroit Lakes MN 56501



website: www.AffinityRealEstate.com | email: info@affinityrealestate.com | office: 218-237-3333 | fax: 218-237-3377



\$749,900
MLS 6815969 Commercial
514 Summit Avenue
Detroit Lakes MN 56501



website: www.AffinityRealEstate.com | email: info@affinityrealestate.com | office: 218-237-3333 | fax: 218-237-3377

Affinity
REAL ESTATE INC

\$749,900
MLS 6815969 Commercial
514 Summit Avenue
Detroit Lakes MN 56501



website: www.AffinityRealEstate.com | email: info@affinityrealestate.com | office: 218-237-3333 | fax: 218-237-3377



\$749,900
MLS 6815969 Commercial
514 Summit Avenue
Detroit Lakes MN 56501