



MLS 6816030 Land

\$38,000

0.28 Acres
Finished Lot(s)

TBDx Oak Knoll Drive
Alexandria MN 56308

Status: Active



Description:

Nice level in town lot with access to city sewer, water and electric

Additional Details:

Lot Acres	0.28
Lot Dimensions	146,168,223
School District	1015
Taxes	(unreported)
Taxes with Assessments	(unreported)
Tax Year	2025

Additional Features:

Driving Directions:

Hwy 29 take a right on Mckay Ave and a Left on S Oak Knoll Drive.



Listed By:
Coldwell Banker Crown Realtors

Affinity Real Estate Inc. participates in the Regional Multiple Listing Service of Minnesota, Inc Broker Reciprocity (sm) program, allowing us to display other broker's listings on our website. All properties are subject to prior sale, change or withdrawal.



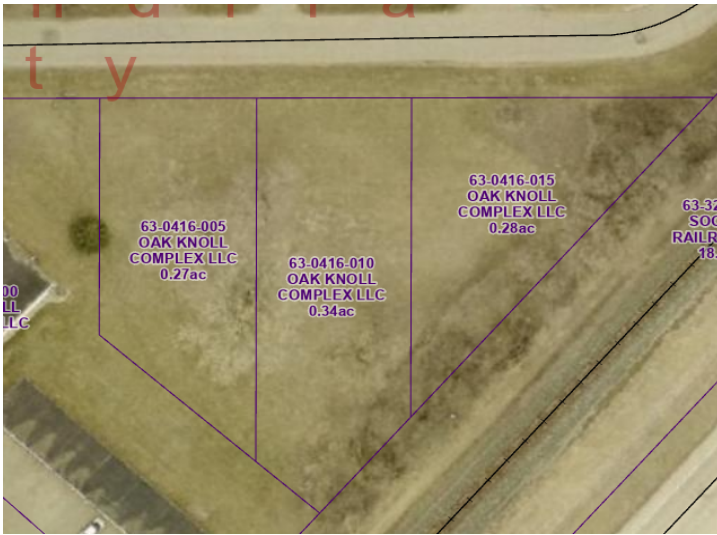
Call Affinity Real Estate

218-237-3333

info@affinityrealestate.com



Affinity Real Estate - 600 Park Avenue South - Park Rapids MN 56470



website: www.AffinityRealEstate.com | email: info@affinityrealestate.com | office: 218-237-3333 | fax:218-237-3377



\$38,000
MLS 6816030 Land
TBDx Oak Knoll Drive
Alexandria MN 56308