



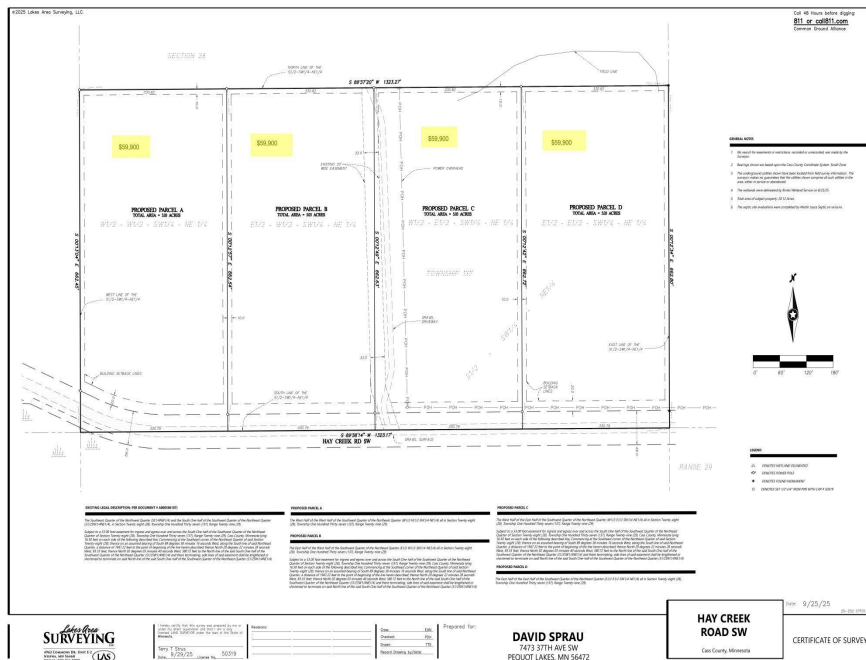
MLS 6816119 Land

**\$59,900**

5.03 Acres  
Raw Land

TBD Parcel D Hay Creek Road  
Pine River MN 56474

Status: Active



### Description:

Excellent opportunity to make an impact and development these newly split parcels, or keep the land as is. The seller is splitting 60 acres, and it has been surveyed and currently there are 4 (5) acre parcels, 2 (10) acre parcels, and a 20 acre piece.

Beautiful, quiet location close situated only minutes from Pequot Lakes! Price range is \$59,900-\$199,900

### Additional Details:

Lot Acres	5.03
Lot Dimensions	330x663
School District	2174
Taxes	\$664
Taxes with Assessments	\$664
Tax Year	2025

### Additional Features:

### Driving Directions:

New split. Hwy 371 North through Jenkins to a left on 12th Ave SW to a right on Hay Creek Road SW to signs and lots. Splitting a total of 60 acres



Listed By:  
Northland Sotheby's International Realty

Affinity Real Estate Inc. participates in the Regional Multiple Listing Service of Minnesota, Inc Broker Reciprocity (sm) program, allowing us to display other broker's listings on our website. All properties are subject to prior sale, change or withdrawal.



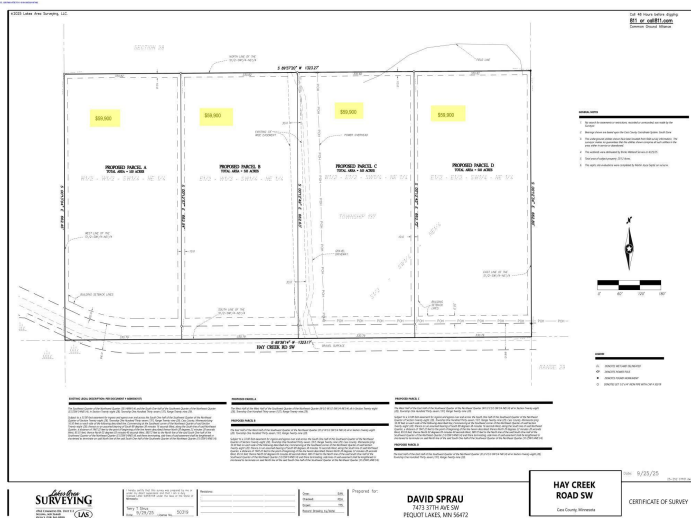
Call Affinity Real Estate

**218-237-3333**

[info@affinityrealestate.com](mailto:info@affinityrealestate.com)



Affinity Real Estate - 600 Park Avenue South - Park Rapids MN 56470



website: [www.AffinityRealEstate.com](http://www.AffinityRealEstate.com) | email: [info@affinityrealestate.com](mailto:info@affinityrealestate.com) | office: 218-237-3333 | fax: 218-237-3377

**Affinity**  
 REAL ESTATE INC

**\$59,900**  
 MLS 6816119 Land  
 TBD Parcel D Hay Creek  
 Road  
 Pine River MN 56474





website: [www.AffinityRealEstate.com](http://www.AffinityRealEstate.com) | email: [info@affinityrealestate.com](mailto:info@affinityrealestate.com) | office: 218-237-3333 | fax: 218-237-3377



**\$59,900**  
 MLS 6816119 Land  
 TBD Parcel D Hay Creek  
 Road  
 Pine River MN 56474





website: [www.AffinityRealEstate.com](http://www.AffinityRealEstate.com) | email: [info@affinityrealestate.com](mailto:info@affinityrealestate.com) | office: 218-237-3333 | fax: 218-237-3377



**\$59,900**  
 MLS 6816119 Land  
 TBD Parcel D Hay Creek  
 Road  
 Pine River MN 56474



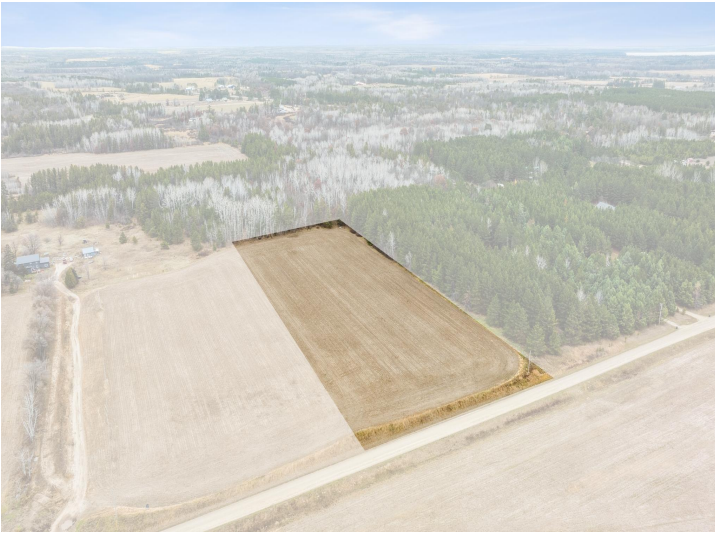


website: [www.AffinityRealEstate.com](http://www.AffinityRealEstate.com) | email: [info@affinityrealestate.com](mailto:info@affinityrealestate.com) | office: 218-237-3333 | fax: 218-237-3377



**\$59,900**  
 MLS 6816119 Land  
 TBD Parcel D Hay Creek  
 Road  
 Pine River MN 56474



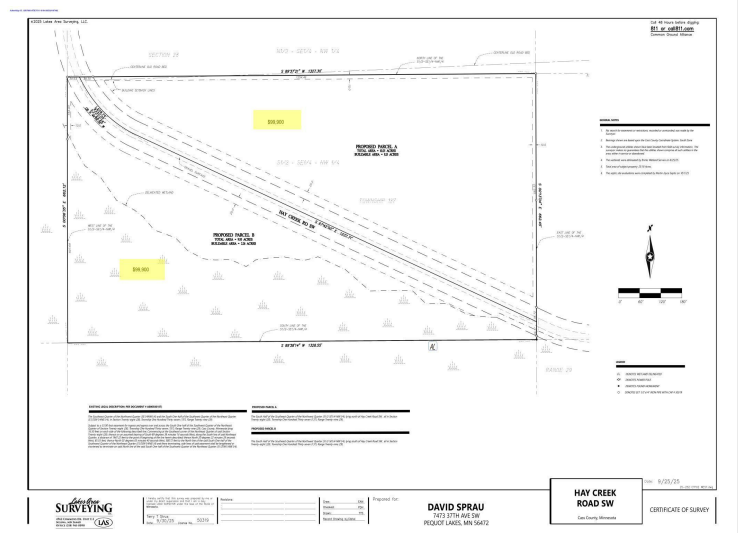


website: [www.AffinityRealEstate.com](http://www.AffinityRealEstate.com) | email: [info@affinityrealestate.com](mailto:info@affinityrealestate.com) | office: 218-237-3333 | fax: 218-237-3377



**\$59,900**  
 MLS 6816119 Land  
 TBD Parcel D Hay Creek  
 Road  
 Pine River MN 56474





website: [www.AffinityRealEstate.com](http://www.AffinityRealEstate.com) | email: [info@affinityrealestate.com](mailto:info@affinityrealestate.com) | office: 218-237-3333 | fax: 218-237-3377



**\$59,900**  
 MLS 6816119 Land  
 TBD Parcel D Hay Creek  
 Road  
 Pine River MN 56474