



MLS 6816393 Commercial

\$185,000

612 5th Street
Bemidji MN 56601

Status: Active

Description:

Prime commercial opportunity along one of Bemidji's main corridors into downtown. Located on 5th St NW, this well-maintained professional office offers excellent visibility, convenient access, and close proximity to the heart of downtown. The property is currently leased to a professional tenant, with the flexibility for an owner-occupant to take over as early as next year. Flexible zoning supports a variety of office or small business uses, and the site includes ample off-street parking for staff and visitors.

Additional Details:

Year Built	1992
Lot Acres	0.144
Lot Dimensions	40x153
School District	1386
Taxes	\$2,352
Taxes with Assessments	\$2,352
Tax Year	2025

Additional Features:

Basement: Unfinished **Fuel:** Array **Heat:** Forced Air **Sewer:** City Sewer/Connected **Water:** City Water/Connected **Air Conditioning:** Central Air

Driving Directions:

From downtown Bemidji, take 5th St west to the 600 block.



Listed By:
Dakota Plains Realty

Affinity Real Estate Inc. participates in the Regional Multiple Listing Service of Minnesota, Inc Broker Reciprocity (sm) program, allowing us to display other broker's listings on our website. All properties are subject to prior sale, change or withdrawal.



Call Affinity Real Estate

218-237-3333

info@affinityrealestate.com



Affinity Real Estate - 600 Park Avenue South - Park Rapids MN 56470



website: www.AffinityRealEstate.com | email: info@affinityrealestate.com | office: 218-237-3333 | fax: 218-237-3377

Affinity
REAL ESTATE INC

\$185,000
MLS 6816393 Commercial
612 5th Street
Bemidji MN 56601



website: www.AffinityRealEstate.com | email: info@affinityrealestate.com | office: 218-237-3333 | fax: 218-237-3377

Affinity
REAL ESTATE INC

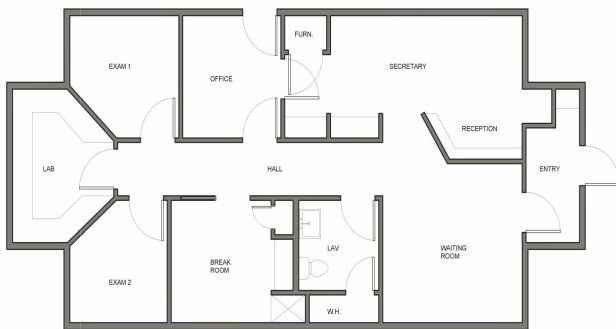
\$185,000
MLS 6816393 Commercial
612 5th Street
Bemidji MN 56601



website: www.AffinityRealEstate.com | email: info@affinityrealestate.com | office: 218-237-3333 | fax: 218-237-3377

Affinity
REAL ESTATE INC

\$185,000
MLS 6816393 Commercial
612 5th Street
Bemidji MN 56601



website: www.AffinityRealEstate.com | email: info@affinityrealestate.com | office: 218-237-3333 | fax: 218-237-3377



\$185,000
 MLS 6816393 Commercial
 612 5th Street
 Bemidji MN 56601