



MLS 6816402 Land

\$175,000

1.2 Acres
Raw Land

893 White Clover Beach Road
Detroit Lakes MN 56501

Status: Active

Description:

Awesome Big Detroit Views from this 1.2 acre lot within Detroit Lakes city limits. Minutes away from Downtown DL, restaurants, golf courses and all the great events Detroit Lakes has to offer. No covenants on these lots but you'll want to be sure to plan your new home build to take advantage of the wonderful views of Big Detroit Lake. The lot next door is also for sale if you are looking to make a statement or more privacy.

Additional Details:

Lot Acres	1.2
Lot Dimensions	85x630
School District	22
Taxes	\$69,011
Taxes with Assessments	\$4,500
Tax Year	2025

Additional Features:

Driving Directions:

Shorewood Dr to White Clover Beach Rd to signs



Listed By:
Lakeplace.com-Lakeshore & More

Affinity Real Estate Inc. participates in the Regional Multiple Listing Service of Minnesota, Inc Broker Reciprocity (sm) program, allowing us to display other broker's listings on our website. All properties are subject to prior sale, change or withdrawal.



Call Affinity Real Estate

218-237-3333

info@affinityrealestate.com



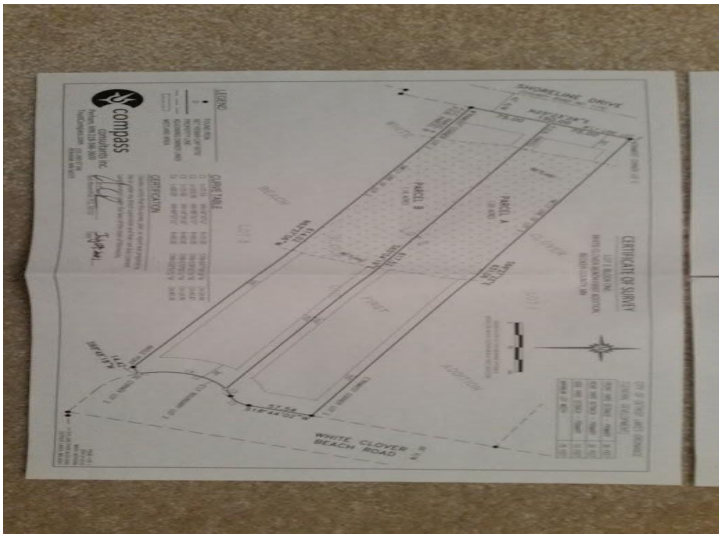
Affinity Real Estate - 600 Park Avenue South - Park Rapids MN 56470



website: www.AffinityRealEstate.com | email: info@affinityrealestate.com | office: 218-237-3333 | fax:218-237-3377



\$175,000
MLS 6816402 Land
893 White Clover Beach
Road
Detroit Lakes MN 56501



website: www.AffinityRealEstate.com | email: info@affinityrealestate.com | office: 218-237-3333 | fax:218-237-3377



\$175,000
MLS 6816402 Land
893 White Clover Beach
Road
Detroit Lakes MN 56501



website: www.AffinityRealEstate.com | email: info@affinityrealestate.com | office: 218-237-3333 | fax:218-237-3377



\$175,000
MLS 6816402 Land
893 White Clover Beach
Road
Detroit Lakes MN 56501