



MLS 6816439 Land

**\$48,500**

5 Acres  
Raw Land

TBD Crest Court  
Bemidji MN 56601

Status: Active

**Description:**

Come and see this beautifully wooded 5.2-acre lot in a great location east of Bemidji. This lot is well wooded with mostly hardwood trees. This property is in an area of larger lot sizes. Quiet, privacy and wildlife await!

**Additional Details:**

Lot Acres	5
Lot Dimensions	415x529
School District	31
Taxes	\$348
Taxes with Assessments	\$348
Tax Year	2025

**Additional Features:**

**Driving Directions:**

North on Lake Ave NE, right on Elliot Rd NE, left on Big Bass Rd NE, right on Little Bass Lake Rd NE, right on Crest Ct NE.



Listed By:  
Century 21 Dickinson

Affinity Real Estate Inc. participates in the Regional Multiple Listing Service of Minnesota, Inc Broker Reciprocity (sm) program, allowing us to display other broker's listings on our website. All properties are subject to prior sale, change or withdrawal.



**Call Affinity Real Estate**

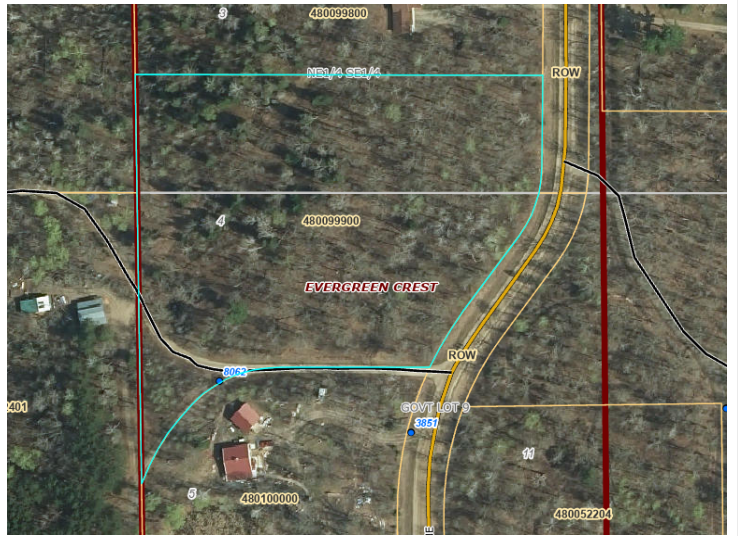
**218-237-3333**

**info@affinityrealestate.com**



**Affinity Real Estate - 600 Park Avenue South - Park Rapids MN 56470**





website: [www.AffinityRealEstate.com](http://www.AffinityRealEstate.com) | email: [info@affinityrealestate.com](mailto:info@affinityrealestate.com) | office: 218-237-3333 | fax: 218-237-3377



**\$48,500**  
 MLS 6816439 Land  
 TBD Crest Court  
 Bemidji MN 56601