



MLS 6817026 Land

\$64,900

6.4 Acres
Finished Lot(s)

TBD Lot 3 Frustration Lane
Park Rapids MN 56470

Status: Active

Description:

Leave your frustrations behind and discover the perfect blend of seclusion and natural beauty with this amazing 6.4 acre wooded property. Tucked away on a cul-de-sac in a quiet, peaceful setting, this land offers endless possibilities. Ideal for outdoor recreation, private retreat, great set up for your RV, building your dream home or cabin in the woods. Including a mix of mature trees (along with old-growth trees) with trails cut throughout, abundant wildlife, and located close to the Portage Lake Public access with walleye, bass, and crappie fishing. It's a rare opportunity to own a slice of nature, perfect for those seeking privacy, serenity, and inspiration. This property also includes an established driveway with gate. Additional acreage available- one 5.0 acre parcel to the East for \$64,900. See MLS # 6817515

Additional Details:

| | |
|------------------------|-----------------|
| Lot Acres | 6.4 |
| Lot Dimensions | 357x577x549x474 |
| School District | 1384 |
| Taxes | \$268 |
| Taxes with Assessments | \$268 |
| Tax Year | 2025 |

Additional Features:

Driving Directions:

From Park Rapids go on 71 Left on County Hwy 48 Right on 210th St Right on Fisherman's Dr. Right on Frustration Lane



Listed By:
Edina Realty, Inc.

Affinity Real Estate Inc. participates in the Regional Multiple Listing Service of Minnesota, Inc Broker Reciprocity (sm) program, allowing us to display other broker's listings on our website. All properties are subject to prior sale, change or withdrawal.



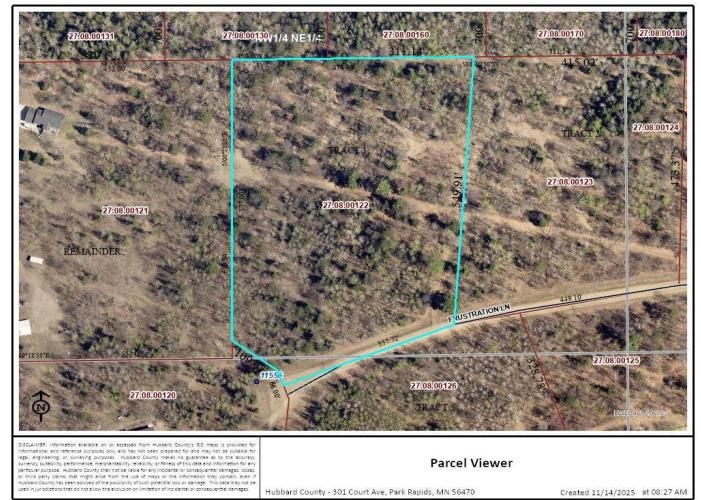
Call Affinity Real Estate

218-237-3333

info@affinityrealestate.com



Affinity Real Estate - 600 Park Avenue South - Park Rapids MN 56470



website: www.AffinityRealEstate.com | email: info@affinityrealestate.com | office: 218-237-3333 | fax: 218-237-3377



\$64,900
 MLS 6817026 Land
 TBD Lot 3 Frustration Lane
 Park Rapids MN 56470



website: www.AffinityRealEstate.com | email: info@affinityrealestate.com | office: 218-237-3333 | fax: 218-237-3377



\$64,900
 MLS 6817026 Land
 TBD Lot 3 Frustration Lane
 Park Rapids MN 56470



website: www.AffinityRealEstate.com | email: info@affinityrealestate.com | office: 218-237-3333 | fax:218-237-3377



\$64,900

MLS 6817026 Land
TBD Lot 3 Frustration Lane
Park Rapids MN 56470