



MLS 6817055 Land

\$99,900

10.25 Acres
Raw Land

Parcel west Hay Creek Road
Pine River MN 56474

Status: Active

Description:

Excellent opportunity to make an impact and development these newly split parcels, or keep the land as is. The seller is splitting 60 acres, and it has been surveyed and currently there are 4 (5) acre parcels, 2 (10) acre parcels, and a 20 acre piece. Beautiful, quiet location close situated only minutes from Pequot Lakes! Price range is \$59,900-\$199,900

Additional Details:

Lot Acres	10.25
Lot Dimensions	irregular
School District	2174
Taxes	\$664
Taxes with Assessments	\$664
Tax Year	2025

Additional Features:

Driving Directions:

New split. Hwy 371 North through Jenkins to a left on 12th Ave SW to a right on Hay Creek Road SW to signs and lots. Splitting a total of 60 acres



Listed By:
Northland Sotheby's International Realty

Affinity Real Estate Inc. participates in the Regional Multiple Listing Service of Minnesota, Inc Broker Reciprocity (sm) program, allowing us to display other broker's listings on our website. All properties are subject to prior sale, change or withdrawal.



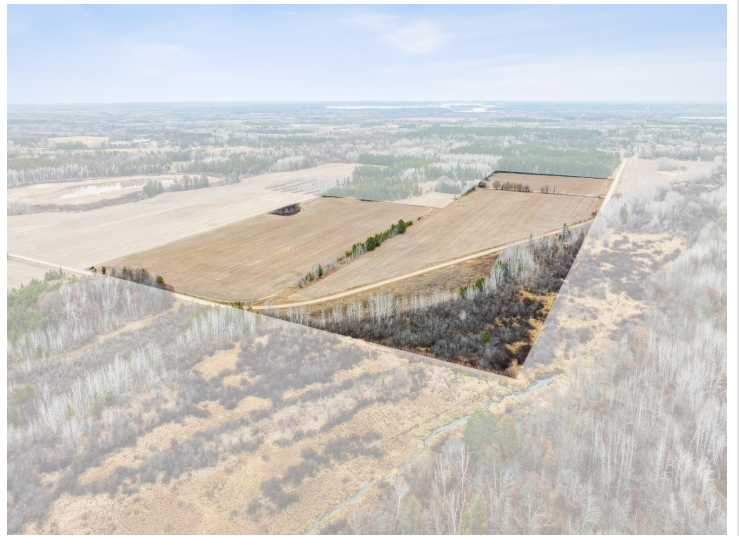
Call Affinity Real Estate

218-237-3333

info@affinityrealestate.com



Affinity Real Estate - 600 Park Avenue South - Park Rapids MN 56470



website: www.AffinityRealEstate.com | email: info@affinityrealestate.com | office: 218-237-3333 | fax: 218-237-3377



\$99,900
MLS 6817055 Land
Parcel west Hay Creek Road
Pine River MN 56474



website: www.AffinityRealEstate.com | email: info@affinityrealestate.com | office: 218-237-3333 | fax: 218-237-3377



\$99,900
 MLS 6817055 Land
 Parcel west Hay Creek Road
 Pine River MN 56474



website: www.AffinityRealEstate.com | email: info@affinityrealestate.com | office: 218-237-3333 | fax: 218-237-3377



\$99,900
 MLS 6817055 Land
 Parcel west Hay Creek Road
 Pine River MN 56474



website: www.AffinityRealEstate.com | email: info@affinityrealestate.com | office: 218-237-3333 | fax: 218-237-3377



\$99,900
MLS 6817055 Land
Parcel west Hay Creek Road
Pine River MN 56474