



MLS 6817156 Commercial

**\$14**

510 Washington Street  
Brainerd MN 56401

Status: Active

**Description:**

Position your retail or office-service business for success at Mid-Town Center — a vibrant, high-traffic destination in the heart of Brainerd. This desirable end-cap space offers exceptional visibility along the heavily traveled Washington Street / Hwy 210 corridor, with signaled intersections at both ends of the block ensuring easy access. Enjoy strong traffic counts, prominent signage opportunities, and ample shared parking in a well-established center that attracts consistent daily activity. Turn-key space is available to perfectly suit your business needs.

**Additional Details:**

Year Built	1969
Lot Acres	2.56
Lot Dimensions	681x163
School District	181
Taxes	(unreported)
Taxes with Assessments	(unreported)
Tax Year	2025

**Additional Features:**

**Fuel:** Natural Gas **Heat:** Forced Air **Sewer:** City Sewer/Connected **Water:** City Water/Connected **Air Conditioning:** Central Air

**Driving Directions:**

Mid-Town Center is located across the street from the Historic Brainerd Water Tower, on the west side of S 6th Street



Listed By:  
Close-Converse Commercial Prop

Affinity Real Estate Inc. participates in the Regional Multiple Listing Service of Minnesota, Inc Broker Reciprocity (sm) program, allowing us to display other broker's listings on our website. All properties are subject to prior sale, change or withdrawal.



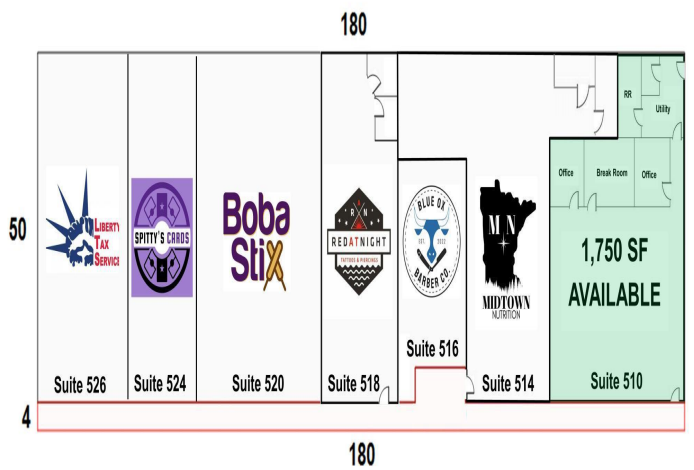
**Call Affinity Real Estate**

**218-237-3333**

**info@affinityrealestate.com**



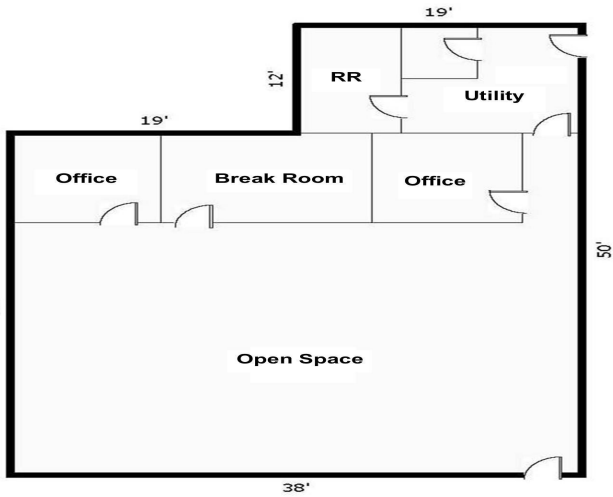
**Affinity Real Estate - 600 Park Avenue South - Park Rapids MN 56470**



website: [www.AffinityRealEstate.com](http://www.AffinityRealEstate.com) | email: [info@affinityrealestate.com](mailto:info@affinityrealestate.com) | office: 218-237-3333 | fax: 218-237-3377



**\$14**  
 MLS 6817156 Commercial  
 510 Washington Street  
 Brainerd MN 56401



website: [www.AffinityRealEstate.com](http://www.AffinityRealEstate.com) | email: [info@affinityrealestate.com](mailto:info@affinityrealestate.com) | office: 218-237-3333 | fax:218-237-3377



**\$14**  
 MLS 6817156 Commercial  
 510 Washington Street  
 Brainerd MN 56401