



MLS 6817408 Residential

\$399,900

3,414 sq ft
3 bedrooms
4 baths

34093 Evans Road
Frazee MN 56544

Status: Active

Description:

Set on 7.5 beautifully wooded acres, this one-and-a-half-story home offers exceptional interior space and strong future potential. The main floor features a generous primary suite with double vanity, jetted tub, separate shower, and two walk-in closets, along with a half bath, living room with gas fireplace, kitchen with center island, and dining area overlooking the property. The upper level provides two additional bedrooms and a full bath. The finished walkout basement adds a family room, theatre/media room, 3/4 bath, and a versatile den area. Outdoor features include a large deck and both a two-stall attached garage and an oversized two-stall detached garage—ideal for storage, equipment, or projects. With substantial acreage and flexible layout options, the property offers long-term development and use opportunities in a private wooded setting.

Additional Details:

Year Built	1998
Lot Acres	7.5
Lot Dimensions	7.5 acres
Garage Stalls	4
School District	1106
Taxes	\$3,972
Taxes with Assessments	\$3,972
Tax Year	2025

Additional Features:

Basement: Finished, Full, Walkout **Fuel:** Array **Garage:** 4 **Heat:** Forced Air **Sewer:** City Sewer/Connected **Water:** City Water/Connected **Air Conditioning:** Central Air

Driving Directions:

From Hwy 87 in Frazee: South on E Main St to right on 8th St SE, continue straight on Evans Rd to property on right.



Listed By:
Gallery of Homes

Affinity Real Estate Inc. participates in the Regional Multiple Listing Service of Minnesota, Inc Broker Reciprocity (sm) program, allowing us to display other broker's listings on our website. All properties are subject to prior sale, change or withdrawal.



Call Affinity Real Estate

218-237-3333

info@affinityrealestate.com



Affinity Real Estate - 600 Park Avenue South - Park Rapids MN 56470



website: www.AffinityRealEstate.com | email: info@affinityrealestate.com | office: 218-237-3333 | fax: 218-237-3377



\$399,900
 MLS 6817408 Residential
 34093 Evans Road
 Frazee MN 56544



website: www.AffinityRealEstate.com | email: info@affinityrealestate.com | office: 218-237-3333 | fax: 218-237-3377

Affinity
REAL ESTATE INC

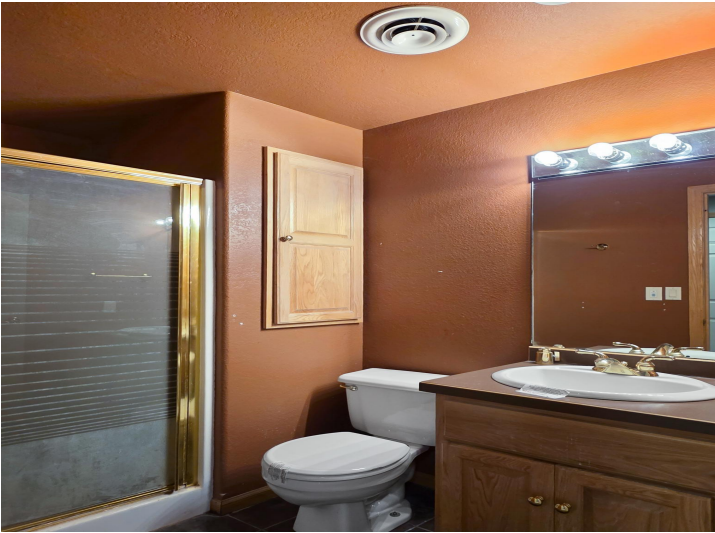
\$399,900
MLS 6817408 Residential
34093 Evans Road
Frazee MN 56544



website: www.AffinityRealEstate.com | email: info@affinityrealestate.com | office: 218-237-3333 | fax: 218-237-3377



\$399,900
MLS 6817408 Residential
34093 Evans Road
Frazee MN 56544



website: www.AffinityRealEstate.com | email: info@affinityrealestate.com | office: 218-237-3333 | fax: 218-237-3377



\$399,900
 MLS 6817408 Residential
 34093 Evans Road
 Frazee MN 56544



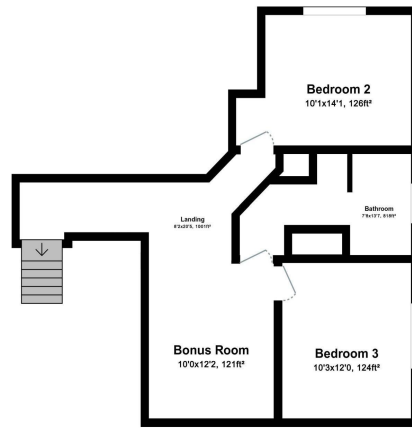
website: www.AffinityRealEstate.com | email: info@affinityrealestate.com | office: 218-237-3333 | fax: 218-237-3377

Affinity
REAL ESTATE INC

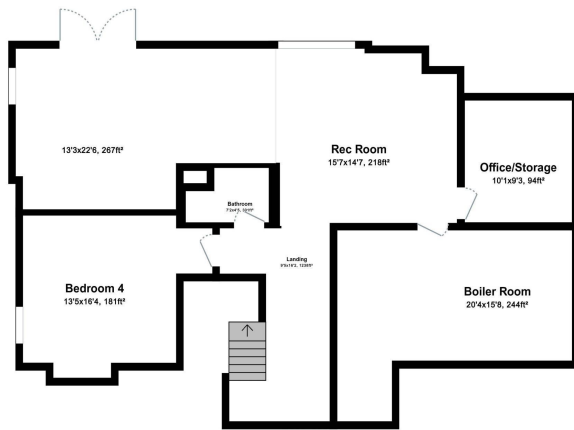
\$399,900
MLS 6817408 Residential
34093 Evans Road
Frazee MN 56544



Main Floor



Upper Floor



Lower Floor

website: www.AffinityRealEstate.com | email: info@affinityrealestate.com | office: 218-237-3333 | fax: 218-237-3377



\$399,900

MLS 6817408 Residential
34093 Evans Road
Frazee MN 56544