



MLS 6817435 Land

\$109,000

35.31 Acres
Raw Land

TBD 370th ST
Ogema MN 56569

Status: Pending

Description:

Located just north of Strawberry Lake in Becker County, this 35.31-acre parcel offers a beautiful mix of wooded terrain and open space. The property features a blend of mature trees, creating excellent wildlife habitat and great hunting opportunities. A portion of the land includes a potential gravel pit area. Enjoy the privacy and natural setting—perfect for a weekend getaway, hunting retreat, or your future home in the woods.

Additional Details:

Lot Acres	35.31
Lot Dimensions	35.31 acres
School District	435
Taxes	\$534
Taxes with Assessments	\$534
Tax Year	2025

Additional Features:

Driving Directions:

From the intersection of Co Hwy 21 (Richwood Rd) and Co Hw 34 by the Richwood Store, head NE on Hwy 34 for 8.8 miles, turn left and head North and continue on Hwy 34, go 4 miles and turn right on 370th St go 1.5 miles to the property on the right side. Just east of 33395 370th St.



Listed By:
Counselor Realty Detroit Lakes

Affinity Real Estate Inc. participates in the Regional Multiple Listing Service of Minnesota, Inc Broker Reciprocity (sm) program, allowing us to display other broker's listings on our website. All properties are subject to prior sale, change or withdrawal.



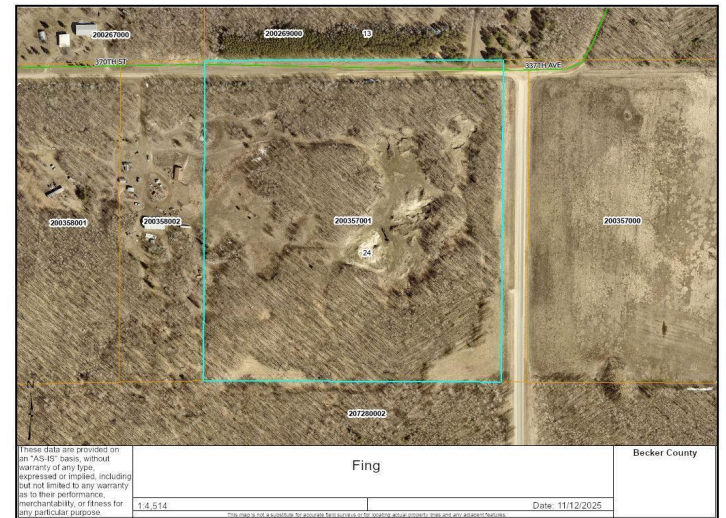
Call Affinity Real Estate

218-237-3333

info@affinityrealestate.com



Affinity Real Estate - 600 Park Avenue South - Park Rapids MN 56470



website: www.AffinityRealEstate.com | email: info@affinityrealestate.com | office: 218-237-3333 | fax:218-237-3377



\$109,000
 MLS 6817435 Land
 TBD 370th ST
 Ogema MN 56569



website: www.AffinityRealEstate.com | email: info@affinityrealestate.com | office: 218-237-3333 | fax:218-237-3377

Affinity
REAL ESTATE INC

\$109,000
MLS 6817435 Land
TBD 370th ST
Ogema MN 56569



website: www.AffinityRealEstate.com | email: info@affinityrealestate.com | office: 218-237-3333 | fax:218-237-3377



\$109,000
MLS 6817435 Land
TBD 370th ST
Ogema MN 56569