



MLS 6817495 Residential

**\$279,900**

1,056 sq ft  
2 bedrooms  
1 baths

17358 Smith Road  
Brainerd MN 56401

Status: Active

**Description:**

Fully rehabbed home on over 1.5 acres. Oversized two car garage to store your cars and toys. Wooded property. New kitchen cabinets, countertops, and appliances. New carpet in both bedrooms. New vanity, bathtub/shower and bath fixtures. New plumbing throughout. Walls, trim and ceilings freshly painted. New interior doors and hardware. Care in workmanship that shows.

**Additional Details:**

Year Built	1986
Lot Acres	1.56
Lot Dimensions	399x125
Garage Stalls	2
School District	181
Taxes	\$1,078
Taxes with Assessments	\$1,078
Tax Year	2025

**Additional Features:**

**Fuel:** Electric, Wood **Heat:** Baseboard, Wood Stove

**Driving Directions:**

From Brainerd go north on Riverside Dr. to Wise Road. Go Left (west on Wise) to Smith Rd, go north approx. 1/2 mile to home on east side of Smith Road. Mobile apps are accurate to location.



Listed By:  
RE/MAX Results - Nisswa

Affinity Real Estate Inc. participates in the Regional Multiple Listing Service of Minnesota, Inc Broker Reciprocity (sm) program, allowing us to display other broker's listings on our website. All properties are subject to prior sale, change or withdrawal.



**Call Affinity Real Estate**

**218-237-3333**

**info@affinityrealestate.com**



**Affinity Real Estate - 600 Park Avenue South - Park Rapids MN 56470**





website: [www.AffinityRealEstate.com](http://www.AffinityRealEstate.com) | email: [info@affinityrealestate.com](mailto:info@affinityrealestate.com) | office: 218-237-3333 | fax: 218-237-3377

**Affinity**  
REAL ESTATE INC

**\$279,900**  
MLS 6817495 Residential  
17358 Smith Road  
Brainerd MN 56401





website: [www.AffinityRealEstate.com](http://www.AffinityRealEstate.com) | email: [info@affinityrealestate.com](mailto:info@affinityrealestate.com) | office: 218-237-3333 | fax: 218-237-3377



**\$279,900**  
MLS 6817495 Residential  
17358 Smith Road  
Brainerd MN 56401



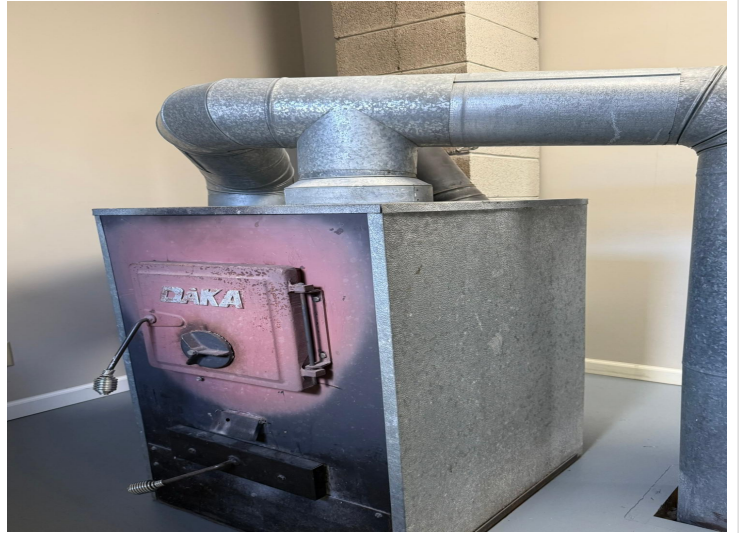
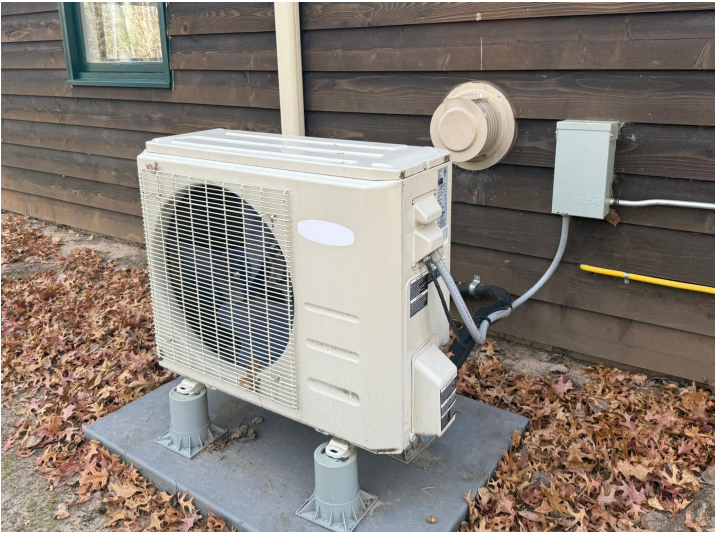


website: [www.AffinityRealEstate.com](http://www.AffinityRealEstate.com) | email: [info@affinityrealestate.com](mailto:info@affinityrealestate.com) | office: 218-237-3333 | fax: 218-237-3377

**Affinity**  
REAL ESTATE INC

**\$279,900**  
MLS 6817495 Residential  
17358 Smith Road  
Brainerd MN 56401





website: [www.AffinityRealEstate.com](http://www.AffinityRealEstate.com) | email: [info@affinityrealestate.com](mailto:info@affinityrealestate.com) | office: 218-237-3333 | fax: 218-237-3377



**\$279,900**  
MLS 6817495 Residential  
17358 Smith Road  
Brainerd MN 56401





website: [www.AffinityRealEstate.com](http://www.AffinityRealEstate.com) | email: [info@affinityrealestate.com](mailto:info@affinityrealestate.com) | office: 218-237-3333 | fax: 218-237-3377



**\$279,900**  
MLS 6817495 Residential  
17358 Smith Road  
Brainerd MN 56401