



MLS 6817515 Land

**\$59,900**

5 Acres  
Finished Lot(s)

TBD Lot 2 Frustration Lane  
Park Rapids MN 56470

Status: Active

**Description:**

Leave your frustrations behind and discover the perfect blend of seclusion and natural beauty with this beautiful 5 acre wooded property. Tucked away on a cul-de-sac in a quiet, peaceful setting, this land offers endless possibilities: ideal for outdoor recreation, a private retreat, great set up for your RV, building your dream home, or cabin in the woods. Including a mix of mature trees with trails cut throughout, abundant wildlife, and located close to the Portage Lake public access with walleye, bass, and crappie fishing. It's a rare opportunity to own a slice of nature, perfect for those seeking privacy, serenity, and inspiration. Parcel next to this one to the west is also for sale and is 6.4 acres for \$74,900. See MLS # 6817026

**Additional Details:**

Lot Acres	5
Lot Dimensions	440x549x415x473
School District	1384
Taxes	\$230
Taxes with Assessments	\$230
Tax Year	2025

**Additional Features:**

**Driving Directions:**

From Park Rapids North on 71 and left on Cty Hwy 48 Right on 210 street, Right on Fisherman's Drive, Right on Frustration Lane



Listed By:  
Edina Realty, Inc.

Affinity Real Estate Inc. participates in the Regional Multiple Listing Service of Minnesota, Inc Broker Reciprocity (sm) program, allowing us to display other broker's listings on our website. All properties are subject to prior sale, change or withdrawal.



**Call Affinity Real Estate**

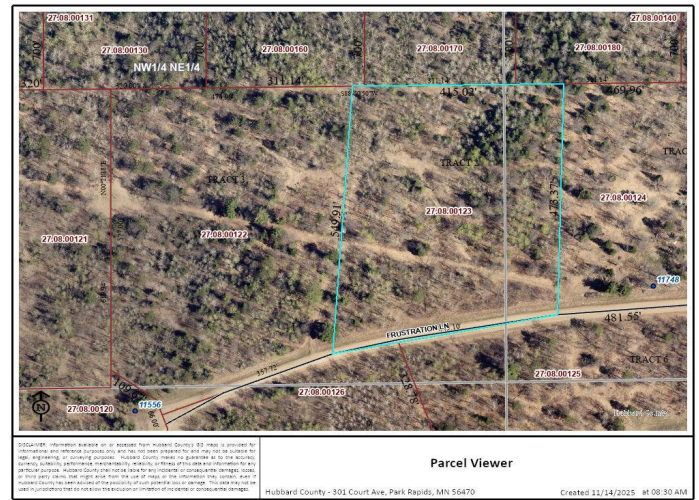
**218-237-3333**

**info@affinityrealestate.com**



**Affinity Real Estate - 600 Park Avenue South - Park Rapids MN 56470**





website: [www.AffinityRealEstate.com](http://www.AffinityRealEstate.com) | email: [info@affinityrealestate.com](mailto:info@affinityrealestate.com) | office: 218-237-3333 | fax: 218-237-3377



**\$59,900**  
 MLS 6817515 Land  
 TBD Lot 2 Frustration Lane  
 Park Rapids MN 56470





website: [www.AffinityRealEstate.com](http://www.AffinityRealEstate.com) | email: [info@affinityrealestate.com](mailto:info@affinityrealestate.com) | office: 218-237-3333 | fax: 218-237-3377



**\$59,900**

MLS 6817515 Land  
TBD Lot 2 Frustration Lane  
Park Rapids MN 56470