



MLS 6817537 Residential

\$444,000

1,570 sq ft
3 bedrooms
3 baths

16290 County Highway 15
Audubon MN 56511

Status: Pending

Description:

RURAL WITH ACREAGE! 16 acres - 3bed - 3bath- 1,570 sq ft - 2 stall attached, heated -ONE LEVEL - 28x40 outbuilding... Should I keep going??? Enjoy privacy and nature in this beautiful property nestled on 16 wooded acres — perfect for hunting or peaceful country living. This well-maintained home offers 3 bedrooms and 3 bathrooms, along with a 256 sq. ft. storm shelter/utility room for added security and functionality. The property features an attached 2-stall heated garage, a 28x40 outbuilding for all your storage or hobby needs, and outdoor amenities including a stamped concrete patio and a gazebo, ideal for relaxing or entertaining guests. Located with easy access to Hwy 15, this home combines rural tranquility with convenient accessibility. Come experience all this unique property has to offer — space, comfort, and endless outdoor possibilities!

Additional Details:

Year Built	2002
Lot Acres	16.08
Lot Dimensions	irr
Garage Stalls	2
School District	2889
Taxes	\$2,176
Taxes with Assessments	\$2,176
Tax Year	2025

Additional Features:

Basement: Other **Fuel:** Propane **Garage:** 2 **Heat:** Forced Air, Fireplace(s) **Sewer:** Private Sewer, Tank with Drainage Field **Water:** Well **Air Conditioning:** Central Air

Driving Directions:

Co Hwy 15, West side of road



Listed By:
Re/Max Lakes Region

Affinity Real Estate Inc. participates in the Regional Multiple Listing Service of Minnesota, Inc Broker Reciprocity (sm) program, allowing us to display other broker's listings on our website. All properties are subject to prior sale, change or withdrawal.



Call Affinity Real Estate

218-237-3333

info@affinityrealestate.com



Affinity Real Estate - 600 Park Avenue South - Park Rapids MN 56470



website: www.AffinityRealEstate.com | email: info@affinityrealestate.com | office: 218-237-3333 | fax: 218-237-3377



\$444,000
 MLS 6817537 Residential
 16290 County Highway 15
 Audubon MN 56511



website: www.AffinityRealEstate.com | email: info@affinityrealestate.com | office: 218-237-3333 | fax: 218-237-3377

Affinity
REAL ESTATE INC

\$444,000
MLS 6817537 Residential
16290 County Highway 15
Audubon MN 56511



website: www.AffinityRealEstate.com | email: info@affinityrealestate.com | office: 218-237-3333 | fax: 218-237-3377

Affinity
REAL ESTATE INC

\$444,000
MLS 6817537 Residential
16290 County Highway 15
Audubon MN 56511



website: www.AffinityRealEstate.com | email: info@affinityrealestate.com | office: 218-237-3333 | fax: 218-237-3377



\$444,000
 MLS 6817537 Residential
 16290 County Highway 15
 Audubon MN 56511



website: www.AffinityRealEstate.com | email: info@affinityrealestate.com | office: 218-237-3333 | fax: 218-237-3377



\$444,000

MLS 6817537 Residential
16290 County Highway 15
Audubon MN 56511

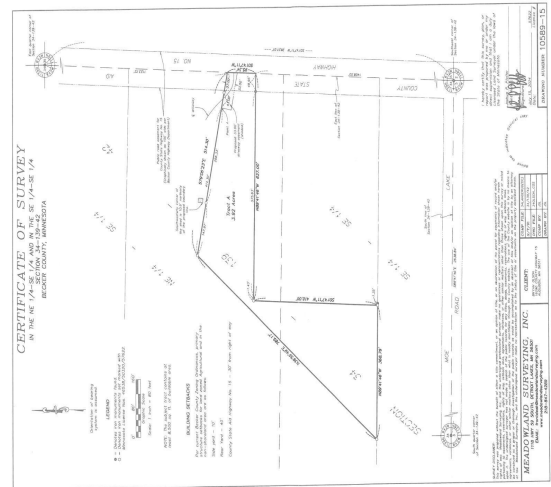


website: www.AffinityRealEstate.com | email: info@affinityrealestate.com | office: 218-237-3333 | fax: 218-237-3377



\$444,000

MLS 6817537 Residential
16290 County Highway 15
Audubon MN 56511



website: www.AffinityRealEstate.com | email: info@affinityrealestate.com | office: 218-237-3333 | fax: 218-237-3377



\$444,000
 MLS 6817537 Residential
 16290 County Highway 15
 Audubon MN 56511