



MLS 6817760 Residential

\$279,900

2,696 sq ft
5 bedrooms
2 baths

110 Evergreen Court
Nevis MN 56467

Status: Active

Description:

Take a look at this spacious 5-bedroom, 2-bathroom Year-round Home in Nevis. Step inside to find a welcoming layout filled with natural light. The generous bedrooms provide plenty of space for family and guests. The kitchen is ready with easy access to the living areas for family gatherings and entertaining. With an attached two-car garage, you'll have ample space for vehicles and storage. The Home is also conveniently on city water and sewer. Situated back in the tall red pines, you'll enjoy small-town living while being just moments away from local amenities. Don't miss out on this opportunity! This Home is ready for you to move in and make it your own!

Additional Details:

Year Built	2008
Lot Acres	0.38
Lot Dimensions	Irr
Garage Stalls	2
School District	308
Taxes	\$2,865
Taxes with Assessments	\$3,086
Tax Year	2025

Additional Features:

Basement: Finished, Full **Fuel:** Propane **Garage:** 2 **Heat:** Forced Air **Sewer:** City Sewer/Connected **Water:** City Water/Connected **Air Conditioning:** None

Driving Directions:

From Nevis East on County 82, right onto Woodland Drive South, Right on Evergreen CT, follow to Home.



Listed By:
Wolff & Simon Real Estate

Affinity Real Estate Inc. participates in the Regional Multiple Listing Service of Minnesota, Inc Broker Reciprocity (sm) program, allowing us to display other broker's listings on our website. All properties are subject to prior sale, change or withdrawal.



Call Affinity Real Estate

218-237-3333

info@affinityrealestate.com



Affinity Real Estate - 600 Park Avenue South - Park Rapids MN 56470



website: www.AffinityRealEstate.com | email: info@affinityrealestate.com | office: 218-237-3333 | fax: 218-237-3377

Affinity
REAL ESTATE INC

\$279,900
MLS 6817760 Residential
110 Evergreen Court
Nevis MN 56467



website: www.AffinityRealEstate.com | email: info@affinityrealestate.com | office: 218-237-3333 | fax: 218-237-3377

Affinity
REAL ESTATE INC

\$279,900
MLS 6817760 Residential
110 Evergreen Court
Nevis MN 56467



website: www.AffinityRealEstate.com | email: info@affinityrealestate.com | office: 218-237-3333 | fax: 218-237-3377

Affinity
REAL ESTATE INC

\$279,900
MLS 6817760 Residential
110 Evergreen Court
Nevis MN 56467



website: www.AffinityRealEstate.com | email: info@affinityrealestate.com | office: 218-237-3333 | fax: 218-237-3377



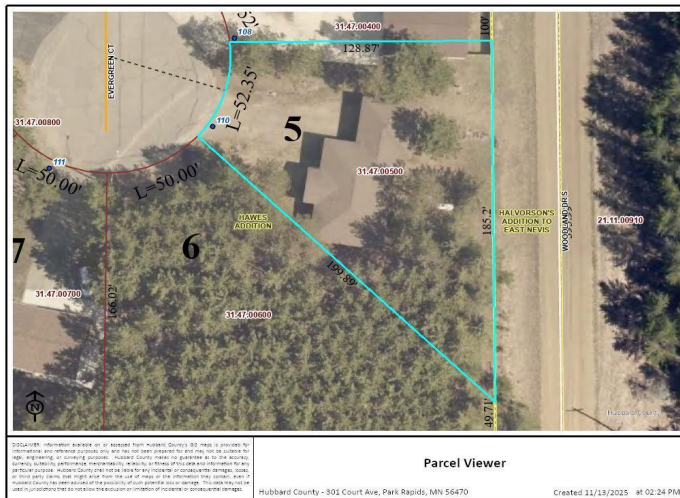
\$279,900
MLS 6817760 Residential
110 Evergreen Court
Nevis MN 56467



website: www.AffinityRealEstate.com | email: info@affinityrealestate.com | office: 218-237-3333 | fax: 218-237-3377



\$279,900
 MLS 6817760 Residential
 110 Evergreen Court
 Nevis MN 56467



website: www.AffinityRealEstate.com | email: info@affinityrealestate.com | office: 218-237-3333 | fax: 218-237-3377



\$279,900
 MLS 6817760 Residential
 110 Evergreen Court
 Nevis MN 56467