



MLS 6818165 Commercial

\$1,000

704 Washington Street
Brainerd MN 56401

Status: Active

Description:

Suite 704: 500 SF. \$1,000/Month plus Utilities. Excellent opportunity to locate in a retail center located directly in front of the Westgate Mall along the busy Hwy 210 / Washington Street corridor. Highly visible corner location with high traffic counts. Enjoy versatile retail/office space at an affordable rate.

Additional Details:

Year Built	1963
Lot Acres	0.61
Lot Dimensions	140x195x140x185
School District	181
Taxes	(unreported)
Taxes with Assessments	(unreported)
Tax Year	2025

Additional Features:

Fuel: Natural Gas **Heat:** Forced Air

Driving Directions:

From Hwy 210/371 intersection in Baxter - East on Hwy 210 (Washington Street) approx. 1 1/4 miles - Property is on the left (north) at the corner of Washington Street and NW 7th Street



Listed By:
Close-Converse Commercial Prop

Affinity Real Estate Inc. participates in the Regional Multiple Listing Service of Minnesota, Inc Broker Reciprocity (sm) program, allowing us to display other broker's listings on our website. All properties are subject to prior sale, change or withdrawal.



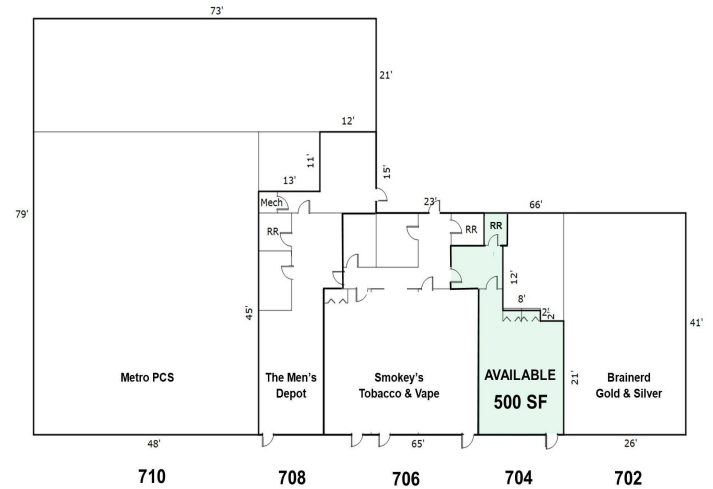
Call Affinity Real Estate

218-237-3333

info@affinityrealestate.com



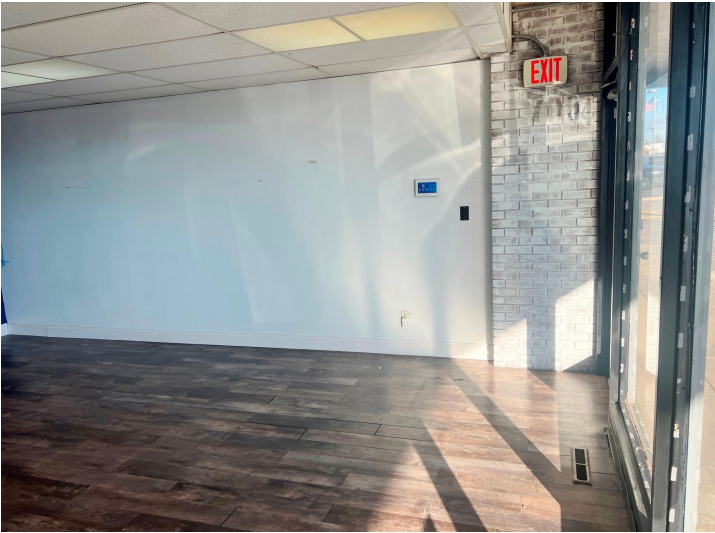
Affinity Real Estate - 600 Park Avenue South - Park Rapids MN 56470



website: www.AffinityRealEstate.com | email: info@affinityrealestate.com | office: 218-237-3333 | fax: 218-237-3377

Affinity
REAL ESTATE INC

\$1,000
MLS 6818165 Commercial
704 Washington Street
Brainerd MN 56401



website: www.AffinityRealEstate.com | email: info@affinityrealestate.com | office: 218-237-3333 | fax:218-237-3377



\$1,000
MLS 6818165 Commercial
704 Washington Street
Brainerd MN 56401