



MLS 6818204 Lake Home

**\$409,900**

2,298 sq ft  
1 bedrooms  
1 baths

26914 State HWY 6  
Crosby MN 56441

Waterfront: Mississippi River

Status: Active

#### Description:

Discover the potential of this unique riverfront property located directly on the Mississippi River. Previously used for commercial purposes, this spacious building offers an incredible opportunity to convert it into a single-family, single-level residence, income producing business or a profitable vacation rental. Let your imagination take the lead!

Featuring a large, open-concept floorplan, the interior provides ample flexibility for creating comfortable living areas. There is generous room to design multiple bedrooms, expand or add kitchen and dining spaces, and incorporate a home office or additional living space.

Conveniently situated on Highway 6, the property is just minutes from Crosby, a thriving community offering state-of-the-art medical facilities, fantastic restaurants, shopping, a beautiful city park with a sand-beach swimming area, and access to the renowned Cuyuna Recreation Area and Bike Trails.

The opportunities here are endless—whether you're seeking a serene riverfront home or an income-generating business, this property places you in the heart of a growing and highly desirable area. Don't miss your chance to become part of the vibrant Crosby community!

#### Additional Details:

Year Built	1930
Lot Acres	1.97
Lot Dimensions	150x385x301x349
Garage Stalls	2
School District	182
Taxes	\$2,051
Taxes with Assessments	\$2,076
Tax Year	2025

#### Additional Features:

**Basement:** Unfinished **Fuel:** Electric, Propane **Garage:** 2 **Heat:** Forced Air **Sewer:** Private Sewer **Water:** Drilled **Air Conditioning:** Central Air



Listed By:  
RE/MAX Results - Nisswa

From Crosby North on Highway 6 to immediate right after Mississippi River bridge  
Affinity Real Estate Inc. participates in the Regional Multiple Listing Service of Minnesota, Inc Broker Reciprocity (sm) program, allowing us to display other broker's listings on our website. All properties are subject to prior sale, change or withdrawal.



**Call Affinity Real Estate**

**218-237-3333**

**info@affinityrealestate.com**



**Affinity Real Estate - 600 Park Avenue South - Park Rapids MN 56470**





website: [www.AffinityRealEstate.com](http://www.AffinityRealEstate.com) | email: [info@affinityrealestate.com](mailto:info@affinityrealestate.com) | office: 218-237-3333 | fax: 218-237-3377



**\$409,900**  
 MLS 6818204 Lake Home  
 26914 State HWY 6  
 Crosby MN 56441





website: [www.AffinityRealEstate.com](http://www.AffinityRealEstate.com) | email: [info@affinityrealestate.com](mailto:info@affinityrealestate.com) | office: 218-237-3333 | fax: 218-237-3377

**Affinity**  
REAL ESTATE INC

**\$409,900**  
MLS 6818204 Lake Home  
26914 State HWY 6  
Crosby MN 56441



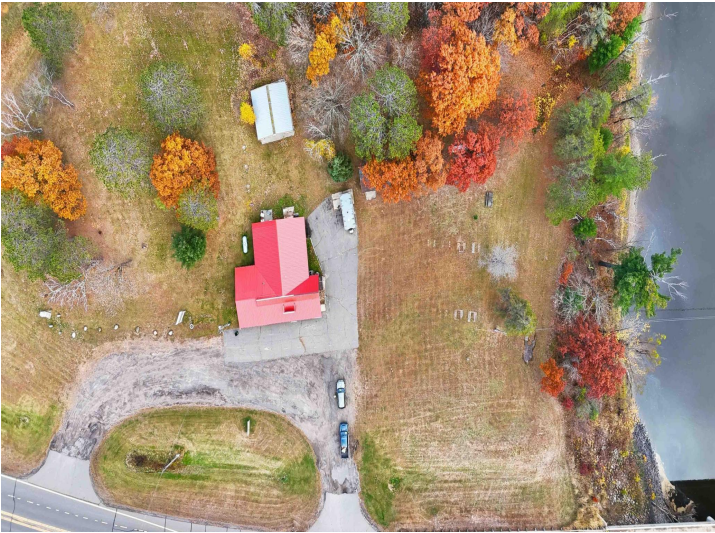


website: [www.AffinityRealEstate.com](http://www.AffinityRealEstate.com) | email: [info@affinityrealestate.com](mailto:info@affinityrealestate.com) | office: 218-237-3333 | fax: 218-237-3377

**Affinity**  
REAL ESTATE INC

**\$409,900**  
MLS 6818204 Lake Home  
26914 State HWY 6  
Crosby MN 56441





website: [www.AffinityRealEstate.com](http://www.AffinityRealEstate.com) | email: [info@affinityrealestate.com](mailto:info@affinityrealestate.com) | office: 218-237-3333 | fax: 218-237-3377



**\$409,900**

MLS 6818204 Lake Home  
26914 State HWY 6  
Crosby MN 56441