



MLS 6818306 Residential

\$314,900

3,246 sq ft
3 bedrooms
5 baths

9685 Cable Road
Little Falls MN 56345

Status: Hold

Description:

Enjoy riverfront living in this 3,200-sq-ft, 3BR/5BA home on the fish-filled Swan River. Highlights include a cozy kitchen fireplace, three-season sunroom, main-floor laundry, handicapped-friendly bath, master suite with walk-in and jetted tub, lower-level kitchen, canning room, and walkout basement. Newer steel roof and inground sprinklers. Fantastic garage setup: heated game-room garage with sink and half bath, unheated parking garage, plus an additional shop/shed. Home is not in the flood zone! Don't miss out on this one!

Additional Details:

Year Built	1977
Lot Acres	1.26
Lot Dimensions	242x220
Garage Stalls	4
School District	1795
Taxes	\$3,198
Taxes with Assessments	\$4,020
Tax Year	2025

Additional Features:

Fuel: Array **Heat:** Forced Air

Driving Directions:

From Little Falls go west on 27, to County Rd 238. Go approximately 4 miles to Cable Rd take right. Approximately 2 miles to property on left. 9685 Cable Rd.



Listed By:
eXp Realty

Affinity Real Estate Inc. participates in the Regional Multiple Listing Service of Minnesota, Inc Broker Reciprocity (sm) program, allowing us to display other broker's listings on our website. All properties are subject to prior sale, change or withdrawal.



Call Affinity Real Estate

218-237-3333

info@affinityrealestate.com



Affinity Real Estate - 600 Park Avenue South - Park Rapids MN 56470



website: www.AffinityRealEstate.com | email: info@affinityrealestate.com | office: 218-237-3333 | fax:218-237-3377

Affinity
REAL ESTATE INC

\$314,900
MLS 6818306 Residential
9685 Cable Road
Little Falls MN 56345



website: www.AffinityRealEstate.com | email: info@affinityrealestate.com | office: 218-237-3333 | fax:218-237-3377

Affinity
REAL ESTATE INC

\$314,900
MLS 6818306 Residential
9685 Cable Road
Little Falls MN 56345



website: www.AffinityRealEstate.com | email: info@affinityrealestate.com | office: 218-237-3333 | fax:218-237-3377

Affinity
REAL ESTATE INC

\$314,900
MLS 6818306 Residential
9685 Cable Road
Little Falls MN 56345



website: www.AffinityRealEstate.com | email: info@affinityrealestate.com | office: 218-237-3333 | fax:218-237-3377

Affinity
REAL ESTATE INC

\$314,900
MLS 6818306 Residential
9685 Cable Road
Little Falls MN 56345



website: www.AffinityRealEstate.com | email: info@affinityrealestate.com | office: 218-237-3333 | fax: 218-237-3377

Affinity
REAL ESTATE INC

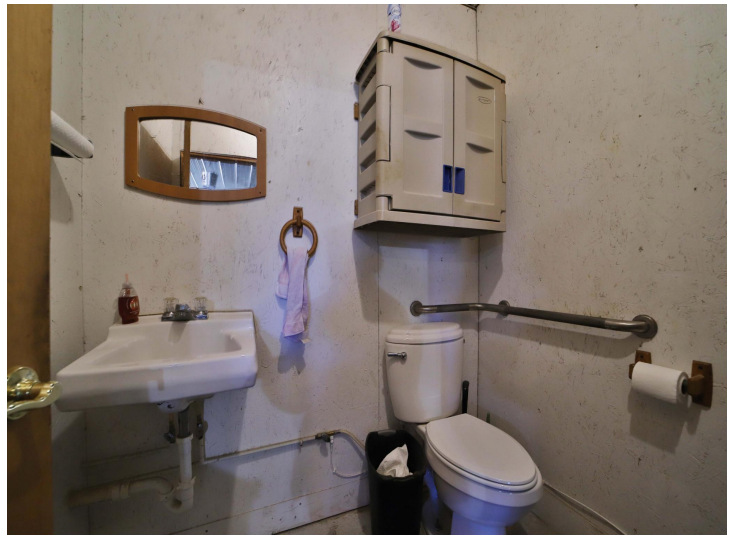
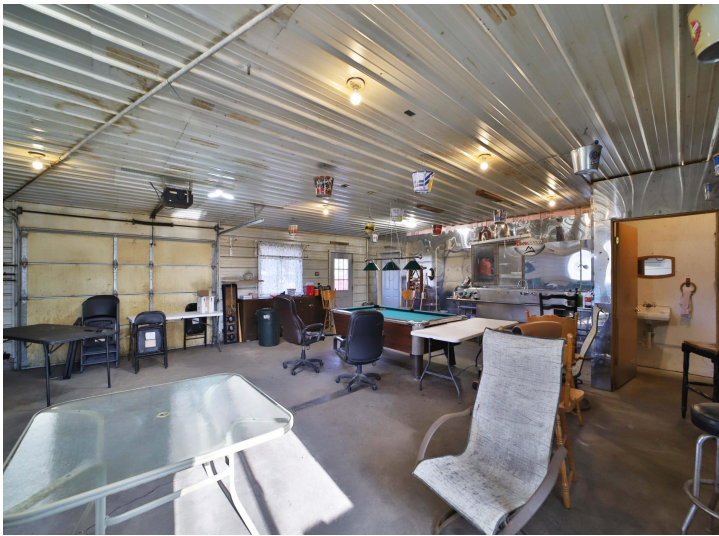
\$314,900
MLS 6818306 Residential
9685 Cable Road
Little Falls MN 56345



website: www.AffinityRealEstate.com | email: info@affinityrealestate.com | office: 218-237-3333 | fax: 218-237-3377

Affinity
REAL ESTATE INC

\$314,900
MLS 6818306 Residential
9685 Cable Road
Little Falls MN 56345



website: www.AffinityRealEstate.com | email: info@affinityrealestate.com | office: 218-237-3333 | fax: 218-237-3377

Affinity
REAL ESTATE INC

\$314,900
MLS 6818306 Residential
9685 Cable Road
Little Falls MN 56345



website: www.AffinityRealEstate.com | email: info@affinityrealestate.com | office: 218-237-3333 | fax: 218-237-3377

Affinity
REAL ESTATE INC

\$314,900
MLS 6818306 Residential
9685 Cable Road
Little Falls MN 56345



website: www.AffinityRealEstate.com | email: info@affinityrealestate.com | office: 218-237-3333 | fax: 218-237-3377

Affinity
REAL ESTATE INC

\$314,900
MLS 6818306 Residential
9685 Cable Road
Little Falls MN 56345



website: www.AffinityRealEstate.com | email: info@affinityrealestate.com | office: 218-237-3333 | fax:218-237-3377

Affinity
REAL ESTATE INC

\$314,900
MLS 6818306 Residential
9685 Cable Road
Little Falls MN 56345