



MLS 6818372 Residential

**\$579,999**

1,728 sq ft  
4 bedrooms  
2 baths

6810 25th Avenue  
Pequot Lakes MN 56472

Status: Pending

#### Description:

Welcome to a rare opportunity to own nearly 20 acres in one of the most desirable areas of the entire Brainerd Lakes region. This completed 4-bedroom, 2-bath split-level home sits just minutes from Pequot Lakes, Breezy Point, and Nisswa—a highly sought-after hub known for recreation, shopping, dining, lakes, and year-round attractions. The convenience of this location paired with the space and privacy of open acreage makes this property truly stand out.

Set on expansive rolling fields, the setting offers stunning sunrise and sunset views every day. With no heavy tree cover blocking the horizon, the property captures the beauty of the Northwoods sky like few others. Whether you enjoy open land, gardening, hobby farming, watching wildlife, or simply having room to spread out, the nearly 20 acres offer endless options.

Inside, the home features a clean, functional layout with an open-concept main level that blends the kitchen, dining area, and living space. Large windows bring in natural light throughout the day and provide beautiful views across the surrounding acreage. The upper level includes three comfortable bedrooms and two full bathrooms, arranged for easy everyday use.

The lower level adds even more potential. Here you'll find the fourth bedroom, a dedicated laundry room, an unfinished bathroom, and a spacious unfinished area perfect for a future living room, office, recreation space, workshop, or storage—offering flexibility to tailor the home to your lifestyle or future plans.

The property also shines with its exceptional garage setup. The heated attached 4-stall garage provides year-round convenience and room for vehicles, gear, tools, or equipment. In addition, the 26x40 detached garage offers substantial extra space for a workshop, additional storage, recreational equipment, or small-business use. This combination of garage space is rarely available, especially paired with nearly 20 acres.

What truly elevates this property is the location. Just minutes away, you'll find:

- Downtown Nisswa – boutique shopping, breweries, restaurants, and well-known seasonal events
- Gull Lake & the Gull Chain – boating, fishing, and premium recreational water access
- Paul Bunyan Trail – miles of biking, running, and snowmobiling opportunities
- Pequot Lakes – championship golf, and multiple destination resorts
- Access to grocery stores, schools, clinics, and even day-care facilities



Affinity Real Estate Inc. participates in the Regional Multiple Listing Service of Minnesota, Inc Broker Reciprocity (sm) program, allowing us to display other broker's listings on our website. All properties are subject to prior sale, change or withdrawal.

Year Built  
Lot Acres

2020  
19.8

Lot Dimensions

660' x 1,302' x 660' x 1,302'

Garage Stalls

4

School District

186



Call Affinity Real Estate

**218-237-3333**

**info@affinityrealestate.com**



Affinity Real Estate - 600 Park Avenue South - Park Rapids MN 56470





website: [www.AffinityRealEstate.com](http://www.AffinityRealEstate.com) | email: [info@affinityrealestate.com](mailto:info@affinityrealestate.com) | office: 218-237-3333 | fax: 218-237-3377



**\$579,999**  
 MLS 6818372 Residential  
 6810 25th Avenue  
 Pequot Lakes MN 56472





website: [www.AffinityRealEstate.com](http://www.AffinityRealEstate.com) | email: [info@affinityrealestate.com](mailto:info@affinityrealestate.com) | office: 218-237-3333 | fax: 218-237-3377

**Affinity**  
REAL ESTATE INC

**\$579,999**

MLS 6818372 Residential  
6810 25th Avenue  
Pequot Lakes MN 56472





website: [www.AffinityRealEstate.com](http://www.AffinityRealEstate.com) | email: [info@affinityrealestate.com](mailto:info@affinityrealestate.com) | office: 218-237-3333 | fax: 218-237-3377

**Affinity**  
REAL ESTATE INC

**\$579,999**  
MLS 6818372 Residential  
6810 25th Avenue  
Pequot Lakes MN 56472





website: [www.AffinityRealEstate.com](http://www.AffinityRealEstate.com) | email: [info@affinityrealestate.com](mailto:info@affinityrealestate.com) | office: 218-237-3333 | fax: 218-237-3377

**Affinity**  
REAL ESTATE INC

**\$579,999**  
MLS 6818372 Residential  
6810 25th Avenue  
Pequot Lakes MN 56472



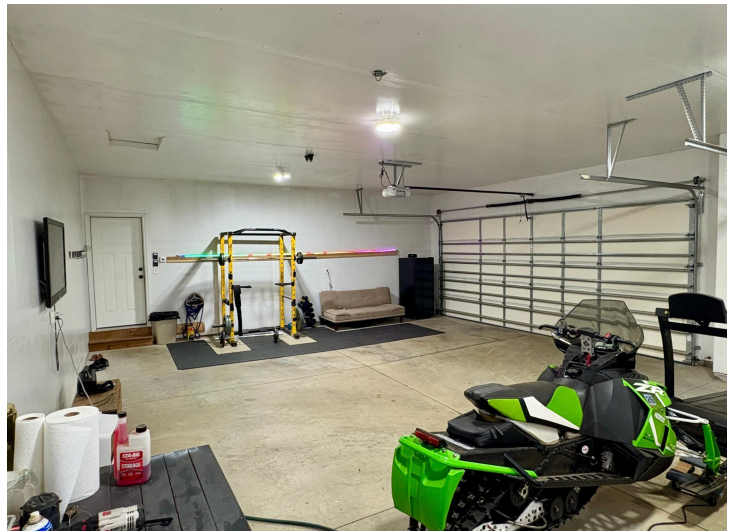


website: [www.AffinityRealEstate.com](http://www.AffinityRealEstate.com) | email: [info@affinityrealestate.com](mailto:info@affinityrealestate.com) | office: 218-237-3333 | fax: 218-237-3377



**\$579,999**  
 MLS 6818372 Residential  
 6810 25th Avenue  
 Pequot Lakes MN 56472





website: [www.AffinityRealEstate.com](http://www.AffinityRealEstate.com) | email: [info@affinityrealestate.com](mailto:info@affinityrealestate.com) | office: 218-237-3333 | fax: 218-237-3377

**Affinity**  
REAL ESTATE INC

**\$579,999**  
MLS 6818372 Residential  
6810 25th Avenue  
Pequot Lakes MN 56472





website: [www.AffinityRealEstate.com](http://www.AffinityRealEstate.com) | email: [info@affinityrealestate.com](mailto:info@affinityrealestate.com) | office: 218-237-3333 | fax: 218-237-3377



**\$579,999**  
 MLS 6818372 Residential  
 6810 25th Avenue  
 Pequot Lakes MN 56472





website: [www.AffinityRealEstate.com](http://www.AffinityRealEstate.com) | email: [info@affinityrealestate.com](mailto:info@affinityrealestate.com) | office: 218-237-3333 | fax: 218-237-3377



**\$579,999**  
 MLS 6818372 Residential  
 6810 25th Avenue  
 Pequot Lakes MN 56472





website: [www.AffinityRealEstate.com](http://www.AffinityRealEstate.com) | email: [info@affinityrealestate.com](mailto:info@affinityrealestate.com) | office: 218-237-3333 | fax:218-237-3377



**\$579,999**

MLS 6818372 Residential  
6810 25th Avenue  
Pequot Lakes MN 56472