



MLS 6818629 Lake Home

\$259,900

1,164 sq ft
2 bedrooms
2 baths

30316 Spruce Drive
Pequot Lakes MN 56472

Waterfront: Pelican

Status: Active

Description:

Welcome to this beautifully updated twin home located inside the gated community of Breezy Point, offering comfort, convenience, and a true Up North lifestyle. With close proximity to top-tier entertainment—including championship golf, fine dining, live music, and the sparkling shores of Pelican Lake—this property is perfectly situated for both relaxation and recreation.

Step inside to find a bright and inviting layout featuring fresh paint throughout, an updated kitchen, and a refreshed bathroom. Enjoy your morning coffee or evening unwind in the newly added 3 season porch, ideal for taking in the peaceful surroundings without the bugs.

Whether you're looking for a year-round home, a weekend escape, or a low-maintenance investment property, this twin home checks all the boxes. A one-stall garage and shed adds extra storage and convenience. This home is waiting for you in one of the area's most sought-after communities.

Additional Details:

Year Built	1984
Lot Acres	0.19
Lot Dimensions	65x125x65x125
Garage Stalls	1
School District	186
Taxes	\$1,188
Taxes with Assessments	\$1,188
Tax Year	2025

Additional Features:

Basement: Finished **Fuel:** Natural Gas **Garage:** 1 **Heat:** Forced Air **Sewer:** City Sewer - In Street **Water:** Shared System, Well **Air Conditioning:** Central Air

Driving Directions:

Take 4 to Breezy Point "gates" - or 3/1 to 11 East into Breezy resort



Listed By:
Coldwell Banker Realty

Affinity Real Estate Inc. participates in the Regional Multiple Listing Service of Minnesota, Inc Broker Reciprocity (sm) program, allowing us to display other broker's listings on our website. All properties are subject to prior sale, change or withdrawal.



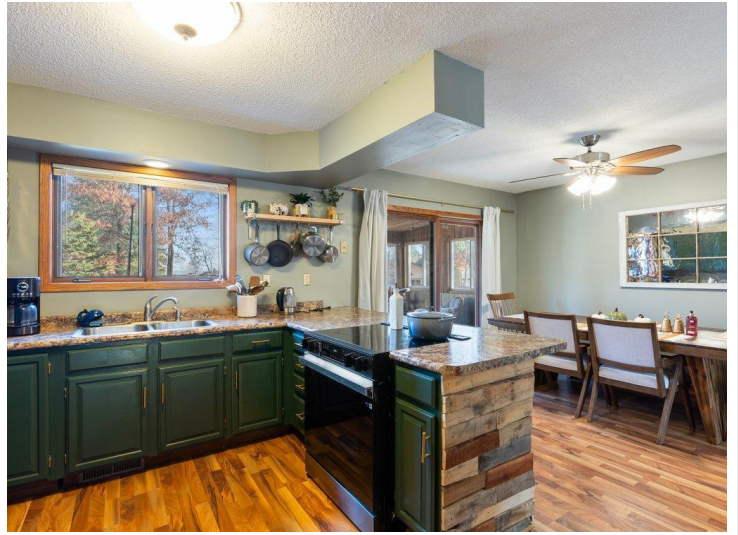
Call Affinity Real Estate

218-237-3333

info@affinityrealestate.com



Affinity Real Estate - 600 Park Avenue South - Park Rapids MN 56470



website: www.AffinityRealEstate.com | email: info@affinityrealestate.com | office: 218-237-3333 | fax: 218-237-3377

Affinity
REAL ESTATE INC

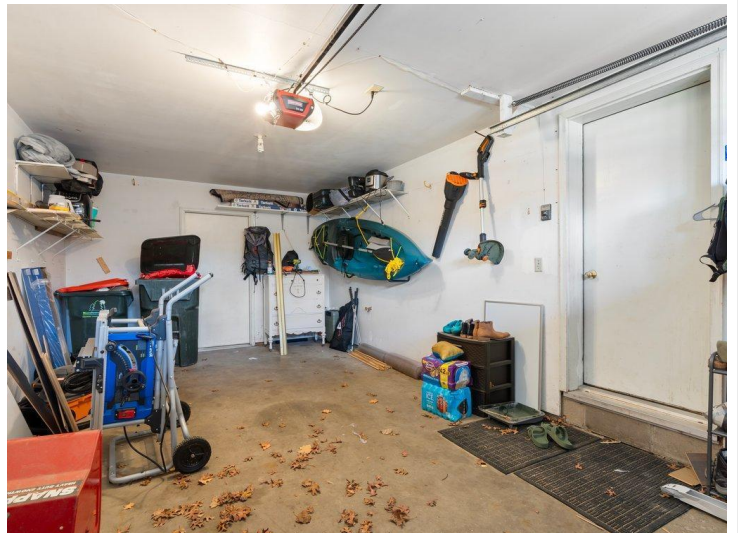
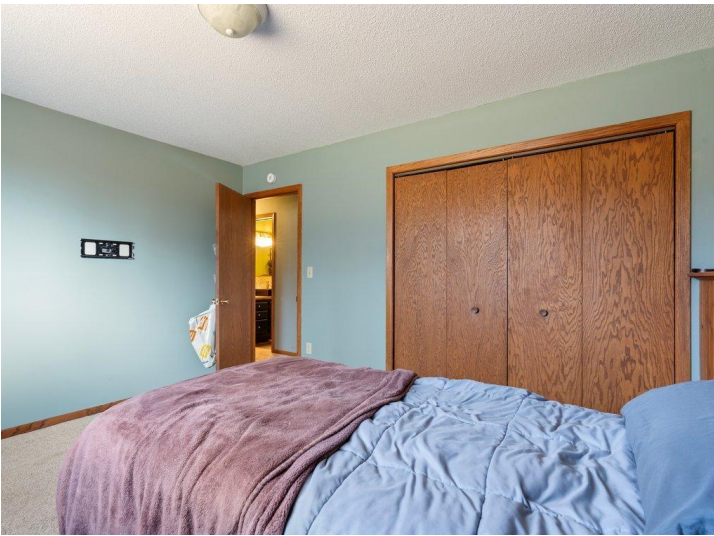
\$259,900
MLS 6818629 Lake Home
30316 Spruce Drive
Pequot Lakes MN 56472



website: www.AffinityRealEstate.com | email: info@affinityrealestate.com | office: 218-237-3333 | fax: 218-237-3377

Affinity
REAL ESTATE INC

\$259,900
MLS 6818629 Lake Home
30316 Spruce Drive
Pequot Lakes MN 56472



website: www.AffinityRealEstate.com | email: info@affinityrealestate.com | office: 218-237-3333 | fax: 218-237-3377

Affinity
REAL ESTATE INC

\$259,900
MLS 6818629 Lake Home
30316 Spruce Drive
Pequot Lakes MN 56472



website: www.AffinityRealEstate.com | email: info@affinityrealestate.com | office: 218-237-3333 | fax: 218-237-3377



\$259,900
 MLS 6818629 Lake Home
 30316 Spruce Drive
 Pequot Lakes MN 56472



website: www.AffinityRealEstate.com | email: info@affinityrealestate.com | office: 218-237-3333 | fax: 218-237-3377



\$259,900

MLS 6818629 Lake Home
30316 Spruce Drive
Pequot Lakes MN 56472