



MLS 6818700 Residential

\$599,900

1,797 sq ft
3 bedrooms
2 baths

Hemlock 3 Firewatch Way
Pequot Lakes MN 56472

Status: Active

Description:

To be built. This is our third design option in the Firewatch Way development. 3 bedroom 2 bath one level home. Primary suite with custom tiled shower and walk-in closet, open concept with natural light, gas fireplace in the living area, in floor heat throughout the home and garage, and unfinished bonus room for future expansion above the garage. The design is chosen and major decisions made and the buyers get to do the fun stuff! Buyers choose interior paint color, cabinet finish/color, tile/backsplash, flooring color, light fixtures, and appliances!

Additional Details:

Year Built	2026
Lot Acres	1
Lot Dimensions	220x206x197x254
Garage Stalls	3
School District	186
Taxes	\$106
Taxes with Assessments	\$106
Tax Year	2025

Additional Features:

Basement: None **Fuel:** Natural Gas **Garage:** 3 **Heat:** Forced Air, Fireplace(s), In-Floor Heating **Sewer:** Septic System Compliant - Yes
Water: Drilled, Private, Well **Air Conditioning:** Central Air

Driving Directions:

From the off ramp in Pequot Lakes from 371, go right on County Road 11 to a right on Firewatch Way to the sign on the right.



Listed By:
Northland Sotheby's International Realty

Affinity Real Estate Inc. participates in the Regional Multiple Listing Service of Minnesota, Inc Broker Reciprocity (sm) program, allowing us to display other broker's listings on our website. All properties are subject to prior sale, change or withdrawal.



Call Affinity Real Estate

218-237-3333

info@affinityrealestate.com



Affinity Real Estate - 600 Park Avenue South - Park Rapids MN 56470



website: www.AffinityRealEstate.com | email: info@affinityrealestate.com | office: 218-237-3333 | fax:218-237-3377



\$599,900
MLS 6818700 Residential
Hemlock 3 Firewatch Way
Pequot Lakes MN 56472



website: www.AffinityRealEstate.com | email: info@affinityrealestate.com | office: 218-237-3333 | fax:218-237-3377



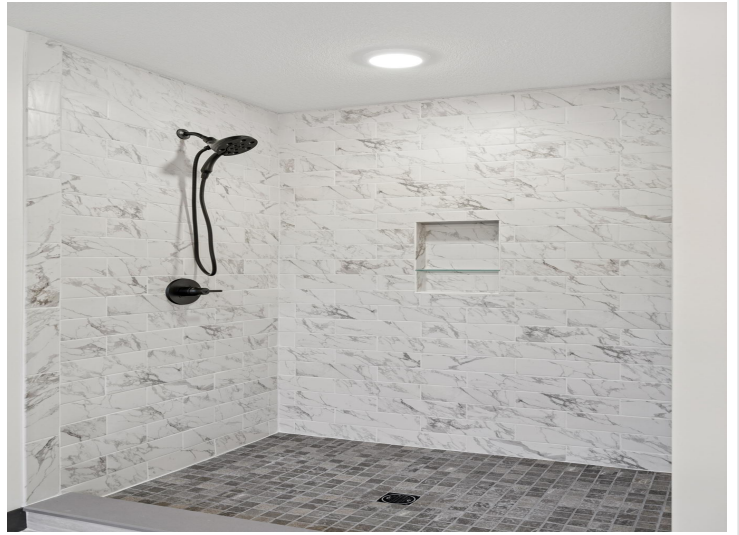
\$599,900
MLS 6818700 Residential
Hemlock 3 Firewatch Way
Pequot Lakes MN 56472



website: www.AffinityRealEstate.com | email: info@affinityrealestate.com | office: 218-237-3333 | fax:218-237-3377



\$599,900
MLS 6818700 Residential
Hemlock 3 Firewatch Way
Pequot Lakes MN 56472



website: www.AffinityRealEstate.com | email: info@affinityrealestate.com | office: 218-237-3333 | fax: 218-237-3377



\$599,900
MLS 6818700 Residential
Hemlock 3 Firewatch Way
Pequot Lakes MN 56472



website: www.AffinityRealEstate.com | email: info@affinityrealestate.com | office: 218-237-3333 | fax:218-237-3377

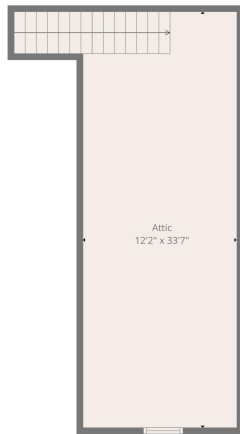


\$599,900
MLS 6818700 Residential
Hemlock 3 Firewatch Way
Pequot Lakes MN 56472



TOTAL: 1797 sq. ft.
 1st floor: 1797 sq. ft, 2nd floor: 0 sq. ft.
 EXCLUDED AREAS: UTILITY: 78 sq. ft, GARAGE: 870 sq. ft, ATTIC: 428 sq. ft.
 WALLS: 195 sq. ft.

Plan Created By: Custom Home Measurements, Copyright © 2020 All Rights Reserved.



TOTAL: 1797 sq. ft.
 1st floor: 1797 sq. ft, 2nd floor: 0 sq. ft.
 EXCLUDED AREAS: UTILITY: 78 sq. ft, GARAGE: 870 sq. ft, ATTIC: 428 sq. ft.
 WALLS: 195 sq. ft.

Plan Created By: Custom Home Measurements, Copyright © 2020 All Rights Reserved.



TOTAL: 1797 sq. ft.
 1st floor: 1797 sq. ft, 2nd floor: 0 sq. ft.
 EXCLUDED AREAS: UTILITY: 78 sq. ft, GARAGE: 870 sq. ft, ATTIC: 428 sq. ft.
 WALLS: 195 sq. ft.

Plan Created By: Custom Home Measurements, Copyright © 2020 All Rights Reserved.



website: www.AffinityRealEstate.com | email: info@affinityrealestate.com | office: 218-237-3333 | fax: 218-237-3377



\$599,900
 MLS 6818700 Residential
 Hemlock 3 Firewatch Way
 Pequot Lakes MN 56472