



MLS 6818929 Residential

\$164,900

1,536 sq ft
2 bedrooms
2 baths

31589 County 23
Akeley MN 56433

Status: Pending

Description:

Looking for a peaceful rural retreat with easy access to nearby towns, fishing, boating, hunting, the Heartland Trail, Itasca State Park, and all the seasonal events this area has to offer? This classic fixer-upper is the perfect opportunity to invest your sweat equity and unlock its full potential.

The home features a functional layout with 2 bedrooms, 2 baths, a welcoming living and dining area, and a lower-level family room complete with a wood-burning fireplace. Supporting your renovation plans is a spacious 26x30 garage with cement flooring, electricity, and automatic doors—ideal for parking vehicles, storing equipment, or setting up a workshop.

Whether you envision an updated residence, a hunting cabin with state land nearby, or even a hobby farm, this property offers endless possibilities. Set on 5 acres, it provides a beautiful mix of trees, natural seclusion, and the chance to catch a glimpse of the northern lights.

Make this your dream escape—where space, beauty, and opportunity come together. Property is being sold "as is".

Additional Details:

Year Built	1964
Lot Acres	5
Lot Dimensions	330x660
Garage Stalls	4
School District	693
Taxes	\$325
Taxes with Assessments	\$546
Tax Year	2025

Additional Features:

Fuel: Array **Heat:** Baseboard, Fireplace(s)

Driving Directions:

From 34/71 in Park Rapids, go east on 34 to Akeley. Go thru Akeley and follow to County 64 and take a left. Go approx 1 mile to County 23 and follow to #31589.



Listed By:
Affinity Real Estate Inc.

Affinity Real Estate Inc. participates in the Regional Multiple Listing Service of Minnesota, Inc Broker Reciprocity (sm) program, allowing us to display other broker's listings on our website. All properties are subject to prior sale, change or withdrawal.



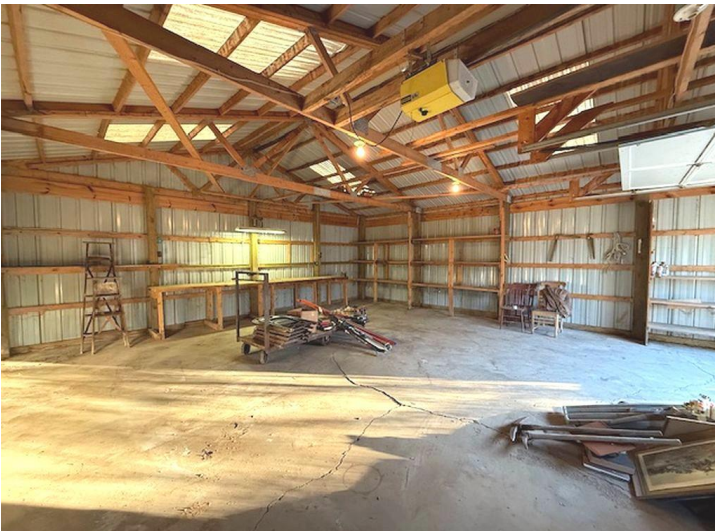
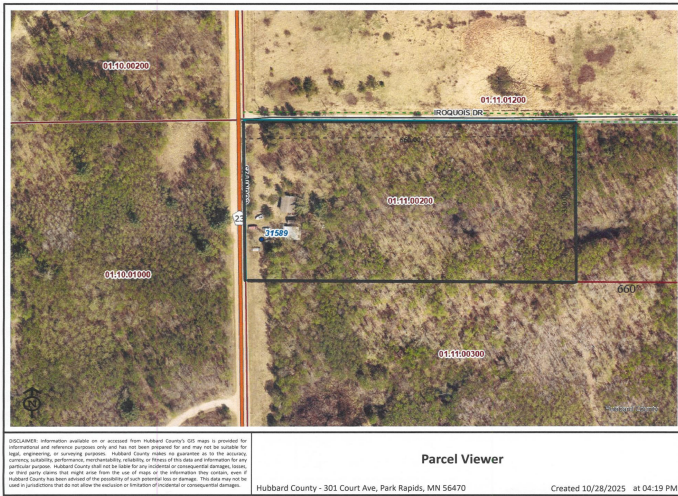
Call Affinity Real Estate

218-237-3333

info@affinityrealestate.com



Affinity Real Estate - 600 Park Avenue South - Park Rapids MN 56470



website: www.AffinityRealEstate.com | email: info@affinityrealestate.com | office: 218-237-3333 | fax: 218-237-3377

Affinity
REAL ESTATE INC

\$164,900
MLS 6818929 Residential
31589 County 23
Akeley MN 56433



website: www.AffinityRealEstate.com | email: info@affinityrealestate.com | office: 218-237-3333 | fax: 218-237-3377



\$164,900
 MLS 6818929 Residential
 31589 County 23
 Akeley MN 56433

website: www.AffinityRealEstate.com | email: info@affinityrealestate.com | office: 218-237-3333 | fax:218-237-3377



\$164,900
MLS 6818929 Residential
31589 County 23
Akeley MN 56433