



MLS 6819120 Residential

**\$240,000**

1,252 sq ft  
3 bedrooms  
2 baths

924 King Avenue  
Wadena MN 56482

Status: Active

#### Description:

Welcome home to this charming 3-bedroom, 2-bath property perfectly placed on a corner lot in Wadena! All three bedrooms are conveniently located on the main level, featuring beautiful hardwood floors that bring warmth and character throughout. Enjoy the benefit of three garage stalls, one attached for easy everyday access and a two-stall detached garage ideal for extra storage, vehicles, hobbies, or a workshop. The unfinished basement offers incredible opportunity as an equity builder. Add a bonus room, office, or additional bedroom in the future, while still being fully move-in ready today. Laundry is already located in the basement for convenience. With great bones, charming details, and room to grow, this home is the perfect mix of comfort now and potential later. A wonderful opportunity in a great location!

#### Additional Details:

Year Built	1962
Lot Acres	0.267
Lot Dimensions	95x123
Garage Stalls	3
School District	1053
Taxes	\$1,852
Taxes with Assessments	\$1,852
Tax Year	2025

#### Additional Features:

**Basement:** Block, Sump Pump, Unfinished **Fuel:** Array **Garage:** 3 **Heat:** Forced Air **Sewer:** City Sewer/Connected **Water:** City Water/Connected  
**Air Conditioning:** Window Unit(s)

#### Driving Directions:

From Hwy 10 head west on Jefferson St, take a right on King Ave SW, then home will be on the right.



Listed By:  
LPT Realty, LLC

Affinity Real Estate Inc. participates in the Regional Multiple Listing Service of Minnesota, Inc Broker Reciprocity (sm) program, allowing us to display other broker's listings on our website. All properties are subject to prior sale, change or withdrawal.



Call Affinity Real Estate

**218-237-3333**

[info@affinityrealestate.com](mailto:info@affinityrealestate.com)



Affinity Real Estate - 600 Park Avenue South - Park Rapids MN 56470



website: [www.AffinityRealEstate.com](http://www.AffinityRealEstate.com) | email: [info@affinityrealestate.com](mailto:info@affinityrealestate.com) | office: 218-237-3333 | fax: 218-237-3377

**Affinity**  
REAL ESTATE INC

**\$240,000**  
MLS 6819120 Residential  
924 King Avenue  
Wadena MN 56482





website: [www.AffinityRealEstate.com](http://www.AffinityRealEstate.com) | email: [info@affinityrealestate.com](mailto:info@affinityrealestate.com) | office: 218-237-3333 | fax: 218-237-3377

**Affinity**  
REAL ESTATE INC

**\$240,000**  
MLS 6819120 Residential  
924 King Avenue  
Wadena MN 56482



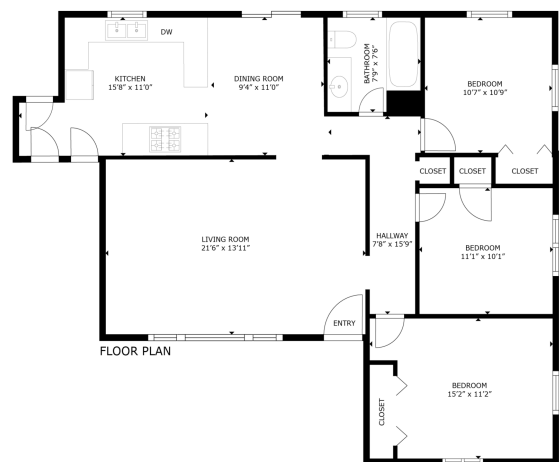


website: [www.AffinityRealEstate.com](http://www.AffinityRealEstate.com) | email: [info@affinityrealestate.com](mailto:info@affinityrealestate.com) | office: 218-237-3333 | fax: 218-237-3377



**\$240,000**  
 MLS 6819120 Residential  
 924 King Avenue  
 Wadena MN 56482





GROSS INTERNAL AREA  
FLOOR PLAN 1,138 sq. ft.  
SIZES AND DIMENSIONS ARE APPROXIMATE, ACTUAL MAY VARY.



website: [www.AffinityRealEstate.com](http://www.AffinityRealEstate.com) | email: [info@affinityrealestate.com](mailto:info@affinityrealestate.com) | office: 218-237-3333 | fax: 218-237-3377



**\$240,000**  
MLS 6819120 Residential  
924 King Avenue  
Wadena MN 56482